

## Where did the 1998 M.Phil. graduates go ?

### I. Introduction

The information contained in this paper is extracted from the Graduate Employment Survey of 1998 to answer the following questions about Master of Philosophy graduates: -

- How were they employed six months after graduation ?
- Of those who pursued further studies, what programmes did they follow ?
- Of those who were employed full-time, how long did it take them to secure their first job offer ?
- In which sectors were they employed ?
- How much did they receive in salary ?
- How many job offers did they receive ?
- Who were their employers and what were their job titles ?

### II. Employment Situation in 1998

Out of 141 M.Phil. graduates, 102 responded to our survey, representing a response rate of 72%. Of these, 74% (or 75 graduates) were in full-time employment within six months of graduation. 17% (or 17 graduates) went on for further studies. Another 6.9% (or 7 graduates) were still seeking full-time employment at the time of the survey. (Table 1)

	M.Phil.										HKU Overall					
	Total				Male				Female				(Research Postgraduates)			
	'98		'97		'98		'97		'98		'97		'98		'97	
	No.	%	No.	%	No.	%	No.	%	No.	%	No.	%	No.	%	No.	%
<i>No. of respondents</i>	102	100	73	100	65	100	43	100	37	100	30	100	184	100	143	100
<i>F/T employed</i>	75	73.5	55	75.3	51	78.5	30	69.8	24	64.9	25	83.3	148	80.4	117	81.8
<i>P/T employed seeking F/T job</i>	1	1.0	0	0	0	0	0	0	1	2.7	0	0	3	1.6	2	1.4
<i>Unemployed seeking F/T job</i>	6	5.9	1	1.4	3	4.6	1	2.3	3	8.1	0	0	9	4.9	4	2.8
<i>Further studies</i>	17	16.7	16	21.9	10	15.4	11	25.6	7	18.9	5	16.7	19	10.3	19	13.3
<i>Emigration/home country</i>	0	0	0	0	0	0	0	0	0	0	0	0	1	0.5	0	0
<i>Not seeking F/T job</i>	3	2.9	1	1.4	1	1.5	1	2.3	2	5.4	0	0	4	2.2	1	0.7

Table 1. Employment situation

## Where did the 1998 M.Phil. graduates go ?

### III. Further Studies

Of the seventeen graduates who pursued postgraduate studies, six graduates were enrolled in local tertiary institutions, while five graduates each went abroad to U.K. and U.S.A and one graduate studied in Canada. Of these, fifteen graduates took up a Ph.D. programme and one graduate each took up a M.Phil. programme and a master (coursework) programme. Table 2 shows the academic programmes pursued & Table 3 shows the source of finance.

Fields of Study	Academic Programmes		
	Ph.D.	M.Phil.	Master (Coursework)
Science	5	1	
Arts	4		
Mathematics	2		
Business Administration/Management	1		
Computer Engineering	1		
Electrical/Electronic Engineering	1		
Law			1
Others	1		

Table 2. Academic programmes

Source of Finance	No. of Graduates
Own Funds	9
Teaching Assistantship/Studentship	7
Full Scholarship	1

Table 3. Source of finance for further studies

### IV. Time Taken to Secure Employment

Among those graduates who were in full-time employment, 91% secured their first job offer before the end of August. The figure increased to 100% after December 1998. (Figure 1)

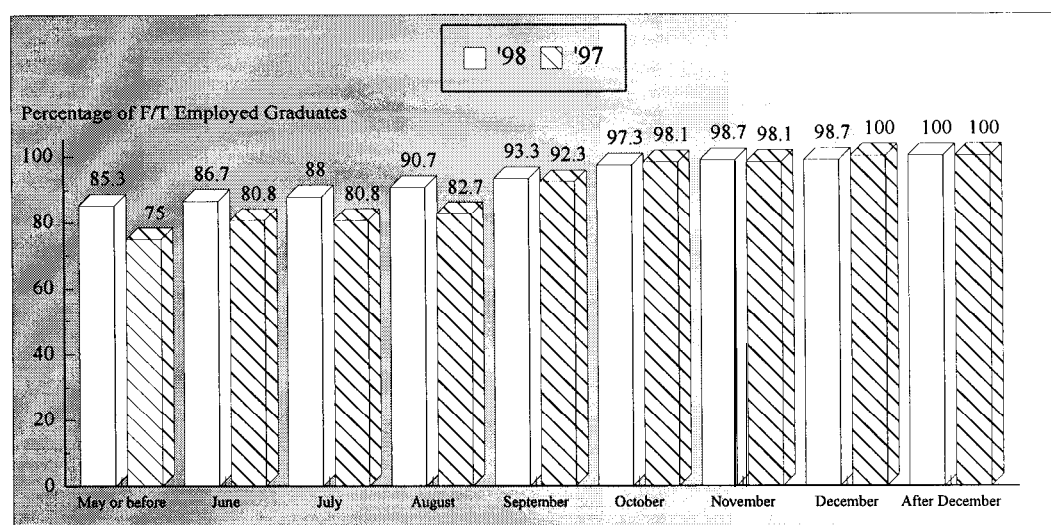
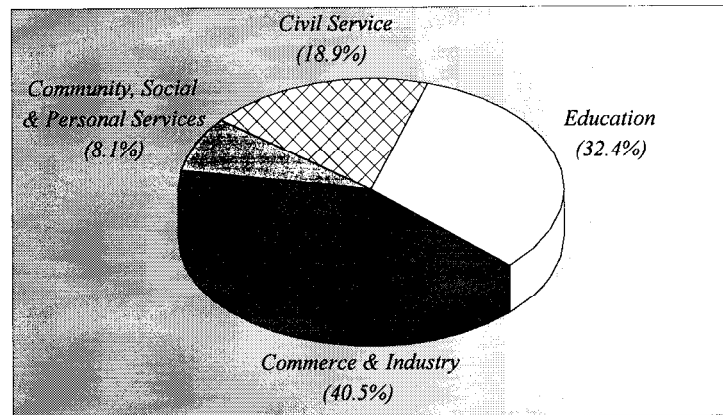


Figure 1. Time taken to secure employment

## Where did the 1998 M.Phil. graduates go ?

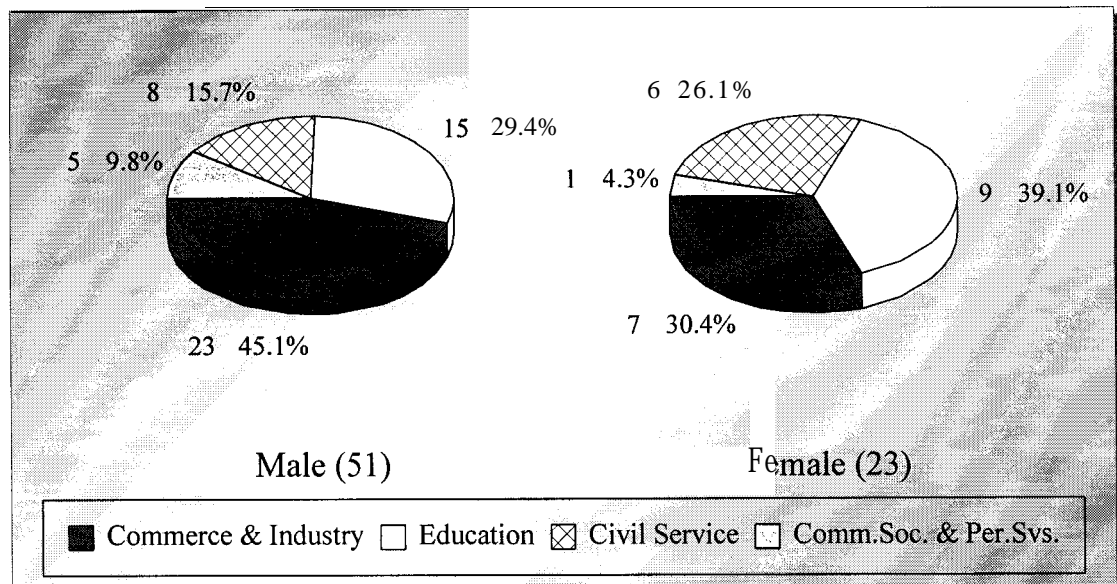
### V. Employment Sectors

41% (or 30 graduates) of the M.Phil. graduates were employed in commerce & industry, followed by 32% (or 24 graduates) in the education sector and 19% (or 14 graduates) in the civil service. The remaining 8% (or 6 graduates) joined the community, social & personal services. (Figures 2 & 3)



No Response = 1

Figure 2. Employment sectors



No Response = 1

Figure 3. Employment sectors by sex

## Where did the 1998 M.Phil. graduates go ?

### VI. Basic Salary and Gross Income

In general, the average income of the M.Phil. graduates was slightly higher than that of their predecessors in the previous year. (Table 4)

	<i>Basic Salary</i>				<i>Gross Income</i>			
	M.Phil.		HKU Average*		M.Phil.		HKU Average*	
	'98	'97	'98	'97	'98	'97	'98	'97
<i>Mean</i>	\$23,512	\$22,616	\$28,769	\$27,070	\$25,001	\$24,102	\$31,577	\$30,400
<i>Median</i>	\$21,005	\$20,135	\$22,075	\$24,000	\$21,833	\$20,568	\$23,833	\$25,000
<i>Minimum</i>	\$10,000	\$9,500	\$9,120	\$9,500	\$10,000	\$9,500	\$9,120	\$9,500
<i>Maximum</i>	\$51,000	\$50,000	\$77,000	\$85,000	\$76,000	\$67,190	\$138,022	\$111,000

Table 4. Basic salary and gross income

\* HKU average refers to the income received by research postgraduates.

### VII. Number of Full-Time Job Offers

Of those in full-time employment, 50% of the graduates had more than one job offer. 24% reported having received three to eight or more job offers. On average, each graduate received 1.9 job offers. (Figure 4)

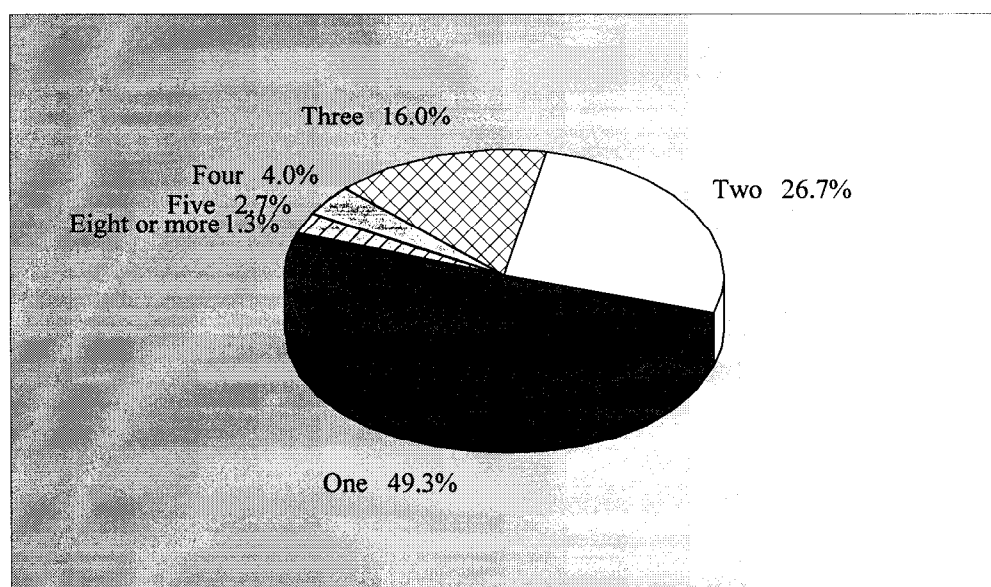


Figure 4. No. of full-time job offers

## *Where did the 1998 M.Phil. graduates go ?*

---

### VIII. Names of Employers and Job Titles

The job titles of the M.Phil. graduates in full-time employment and the names of their employers are listed below.

<u><i>Employers :</i></u>	<u><i>Job Titles :</i></u>
<b>CIVIL SERVICE -</b>	
▶ HKSAR - Civil Aviation Department	. Student Air Traffic Control Officer
▶ HKSAR - Customs & Excise Department	. Executive Officer
▶ HKSAR - Environmental Protection Department	. Assistant Environmental Protection Officer
▶ HKSAR - Department of Health	. Assistant Pest Control Officer
, HKSAR - Hong Kong Observatory	. Duty Officer
▶ HKSAR - Hong Kong Police Force	. Assistant Curator
, HKSAR - Hong Kong Police Force	. Executive Officer
▶ HKSAR - Housing Bureau	. Civil Engineering Graduate
▶ HKSAR - Labour Dept	. Assistant Occupational Hygienist
, HKSAR - Transport Dept	. Executive Officer
▶ HKSAR - Urban Services Department	. Assistant Auditor
, HKSAR - Urban Services Department	. Assistant Librarian
▶ HKSAR - Urban Services Department	. Assistant Manager
, Ministry of Education, Singapore	. Curriculum Specialist
<b>EDUCATION -</b>	
, City University of Hong Kong	. Course Tutor
, City University of Hong Kong	. Executive Officer
, City University of Hong Kong	. Research Assistant
, Fung Kai Liu Man Shek Tong Secondary School	. Graduate Master
▶ HKTA Lee Heng Kwei Secondary School	. Graduate Master
▶ Hong Kong Institute of Education	. Executive Officer
▶ Hong Kong Institute of Education	. Lecturer
, Maryknoll Convent School	. Graduate Master
. SKH Lui Ming Choi Secondary School	• Graduate Master
. St Joan of Arc School	. Graduate Master
. St Paul's College	. Graduate Master
. St Stephen's College	. Graduate Master
. The Chinese University of Hong Kong	. Technician
. The Hong Kong Polytechnic University	. Lecturer
. The Hong Kong Polytechnic University	. Teaching Assistant
. The Hong Kong University of Science & Technology	• Research Assistant
. The University of Hong Kong	. Administrative Assistant
. The University of Hong Kong	. Demonstrator
. The University of Hong Kong	. Research Assistant
. The University of Hong Kong	. Research Assistant
. The University of Hong Kong	. Research Assistant
. The University of Hong Kong	. Senior Technician
. The University of Hong Kong	. Technician
. University of Macau	. Lecturer

## Where did the 1998 M.Phil. graduates go ?

### COMMUNITY, SOCIAL & PERSONAL SERVICES -

- |   |                                 |
|---|---------------------------------|
| · China Manufacturer's Association of Hong Kong | · Economist                     |
| · Christian Family Service Centre               | · Assistant Social Work Officer |
| · Heep Hong Society for Handicapped Children    | · Senior Physiotherapist        |
| • Queen Mary's Hospital                         | · Medical Technologist          |
| · Organization's name not reported              | · Doctor                        |
| · Organization's name not reported              | · Project Manager               |

### COMMERCE & INDUSTRY -

- |   |  |
|---|--|
| · ABC Data & Telecom Ltd                  | · System Engineer                      |
| · ACNielsen                               | · Statistical Services Executive       |
| · American International Assurance Co Ltd | · Actuarial Assistant                  |
| · American International Assurance Co Ltd | · Actuarial Assistant                  |
| • Apple Daily                             | · Translator                           |
| · Armitage Computer System Ltd            | · Senior Programmer                    |
| · ASM Assembly Automation Ltd             | · CAD Engineer                         |
| · BPS International Group Co Ltd          | · Sales & Marketing Manager            |
| · Duty Lawyer Services                    | · Court Liaison Officer                |
| · General Accident Insurance (Asia) Ltd   | · Actuary Assistant                    |
| • Glaxo Wellcome Hong Kong                | · Clinical Research Associate          |
| · HK Air Cargo Terminal Ltd               | · Analyst Programmer                   |
| · InfoCAN Computer (HK) Ltd               | · Programmer                           |
| · JOS Technical Services                  | · Assistant Technical Support Engineer |
| · Maunsell Consultant (Asia) Ltd          | · Graduate Engineer                    |
| · Merck HK Ltd                            | · Technical Support Specialist         |
| · Microworld Electronic Co                | · Engineer                             |
| • Modem Media Poppe Tyson (HK) Ltd        | · Production Manager                   |
| • MTR Corporation                         | · Administrative Services Manager      |
| • Nokia (HK) Ltd                          | · Field Test Engineer                  |
| · Olympus (HK) Ltd                        | · Manager                              |
| · Sing-Tech Precision (Suzhou) Co Ltd     | • Quality Assurance Manager            |
| · Swire Engineering Services Ltd          | · Planning/Computer Engineer           |
| • Television Broadcasting (TVB)           | · Internet Development Officer         |
| · Top System Ltd                          | · Computer Programmer                  |
| · Towers Perrin                           | · Management Consultant                |
| · Tung Fong Hong (Holdings) Ltd           | • Network Administrator                |
| · Organization's name not reported        | · Account Executive                    |
| · Organization's name not reported        | · General Manager                      |

no response = 1

Table 5. List of employers and job titles

Note: Some alumni have indicated willingness to talk to individual students about their work. Their contact telephone number can be obtained from counsellors at CEPC.

## *Where did the 1998 M.Phil. graduates go ?*

---

- IX.** Similar information on graduates from other disciplines of study are available for reference in the Careers Library. Please enquire with the CEPC.

Careers Education and Placement Centre  
3/F Wong Chuang Lai Wah Building  
Meng Wah Complex  
The University of Hong Kong  
Pokfulam Road  
Hong Kong

Telephone : 28592314  
Fax : 2559 5238  
E-Mail : CEPC@HKUCC.HKU.HK  
Homepage : <http://www.hku.hk/cepc>

Opening Hours : Monday - Friday (9:00 a.m. to 5:30 p.m.)  
Saturday (9:00 a.m. to 12:00 p.m.)

Cindy Chan

May, 1999

The analysis is based on information provided by the respondents, and the Careers Education & Placement Centre should not be held responsible for any errors arising therefrom.

No part of this report may be reproduced in any form or by whatever means,  
without written permission from the Director of the Careers Education and Placement Centre,  
The University of Hong Kong