

Where did the 1998 B.Soc.Sc. graduates go ?

I. Introduction

The information contained in this paper is extracted from the Graduate Employment Survey of 1998 to answer the following questions about Bachelor of Social Sciences graduates : -

- . How were they employed six months after graduation ?
- . Of those who pursued further studies, what programmes did they follow ?
- . Of those who were employed full-time, how long did it take them to secure their first job offer ?
- . In which sectors were they employed ?
- . How much did they receive in salary ?
- . How many job offers did they receive ?
- Who were their employers and what were their job titles ?

II. Employment Situation in 1998

Out of 142 B.Soc.Sc. graduates, 123 responded to our survey, representing a response rate of 87%. Of these, 68% (or 84 graduates) were in full-time employment within six months of graduation. 16% (or 20 graduates) went on for further studies. Another 14% (or 17 graduates) were still looking for full-time employment at the time of the survey. (Table 1)

	B.Soc.Sc.										HKU Overall*					
	Total				Male				Female							
	'98		'97		'98		'97		'98		'97					
	No.	%	No.	%	No.	%	No.	%	No.	%	No.	%	No.	%	No.	%
<i>No. of respondents</i>	123	100	123	100	30	100	28	100	93	100	95	100	2383	100	2272	100
<i>F/T employed</i>	84	68.3	97	78.9	19	63.3	19	67.9	65	69.9	78	82.1	1701	71.4	1829	80.5
<i>P/T employed seeking F/T job</i>	8	6.5	1	0.8	2	6.7	0	0	6	6.5	1	1.1	94	3.9	37	1.6
<i>Unemployed seeking F/T job</i>	9	7.3	4	3.3	3	10.0	1	3.6	6	6.5	3	3.2	157	6.6	53	2.3
<i>Further studies</i>	20	16.3	21	17.1	6	20.0	8	28.6	14	15.1	13	13.7	413	17.3	339	14.9
<i>Emigration/home country</i>	0	0	0	0	0	0	0	0	0	0	0	0	3	0.1	4	0.2
<i>Not seeking F/T job</i>	2	1.6	0	0	0	0	0	0	2	2.2	0	0	15	0.6	10	0.4

Table 1. Employment situation

* HKU overall refers to the figure for the total HKU population and includes M.B.,B.S. and B.D.S. graduates.

Where did the 1998 B.Soc.Sc. graduates go ?

III. Further Studies

Sixteen graduates pursued postgraduate studies in the same discipline as their first degree while two graduates studied education and one graduate each studied law and language. Of these, most of them were enrolled in local tertiary institutions and one graduate went abroad to Japan. Table 2 shows the academic programmes pursued & Table 3 shows the source of finance.

Fields of Study	Academic programmes				
	<i>M.Phil.</i>	<i>Master (Coursework)</i>	<i>Postgraduate Certificate</i>	<i>Bachelor</i>	<i>Adv.Diploma/ Diploma</i>
<i>Social Sciences</i>	11	4	1		
<i>Education</i>			2		
<i>Law</i>				1	
<i>Language</i>					1

Table 2. Academic programmes

Source of Finance	No. of Graduates
<i>Own Funds</i>	7
<i>Teaching Assistantship/Studentship</i>	11
<i>Government Grant & Loan</i>	2

Table 3. Source of finance for further studies

IV. Time Taken to Secure Employment

Among those graduates who were in full-time employment, 92% secured their first job offer before the end of September. The figure increased to 100% by the end of December. (Figure 1)

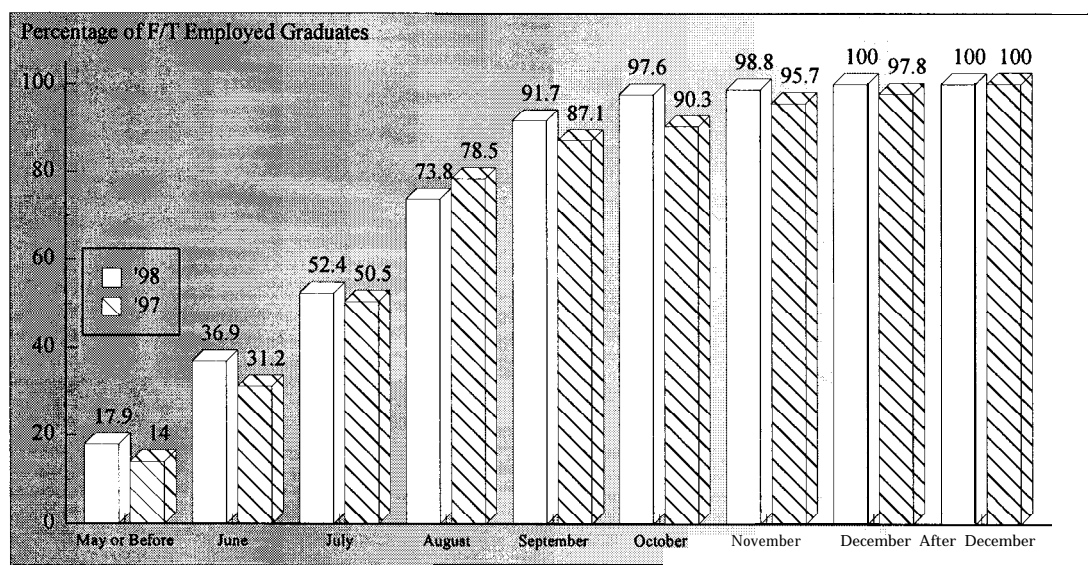


Figure 1. Time taken to secure employment

Where did the 1998 B.Soc.Sc. graduates go ?

V. Employment Sectors

63% (or 53 graduates) of the B.Soc.Sc. graduates were employed in commerce & industry, followed by 13% (or 11 graduates) in the education sector. Another 12% (or 10 graduates) each joined the civil service and the community, social & personal services. (Figures 2 & 3)

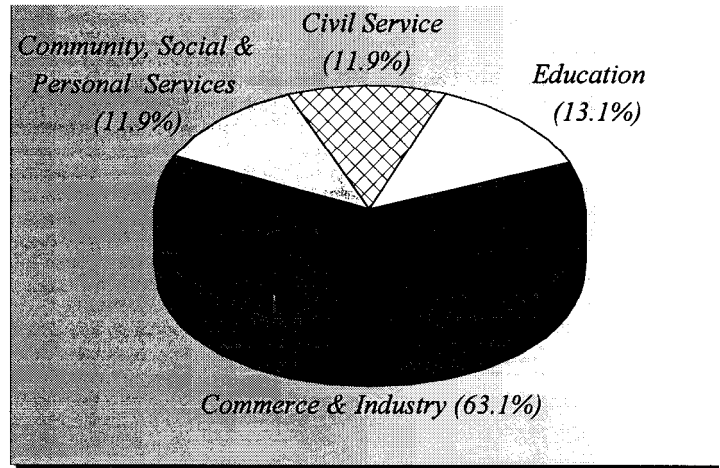


Figure 2. Employment sectors

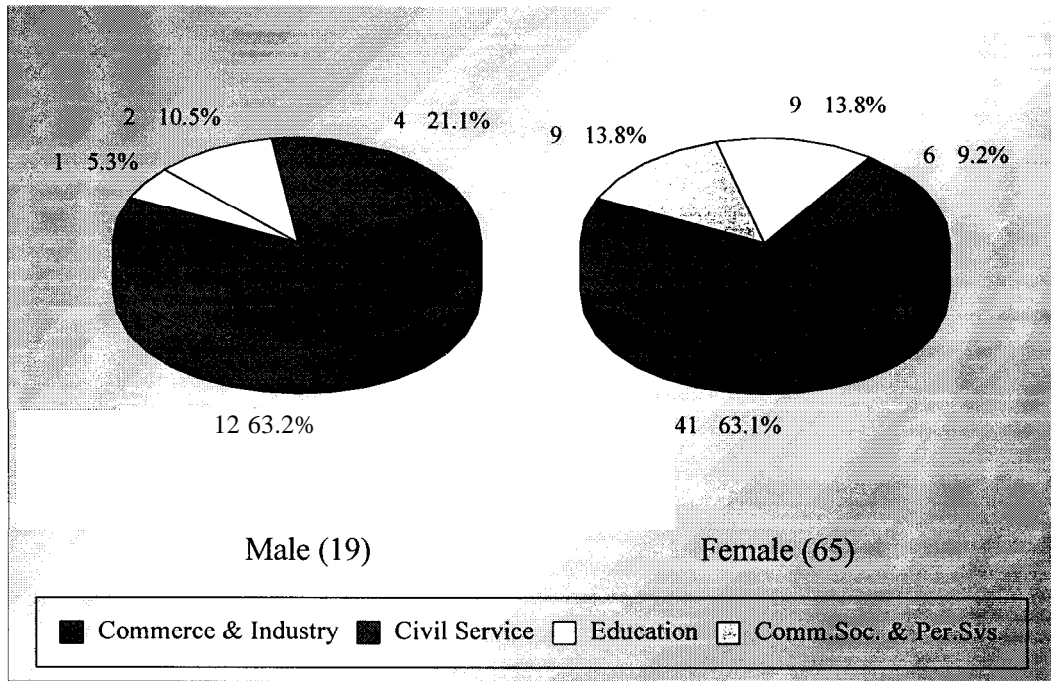


Figure 3. Employment sectors by sex

Where did the 1998 B.Soc.Sc. graduates go ?

VI. Basic Salary and Gross Income

The remuneration received by the B.Soc.Sc. graduates was shown in Table 4.

	<i>Basic Salary</i>				<i>Gross Income</i>			
	B.Soc.Sc.		HKU Average*		B.Soc.Sc.		HKU Average*	
	'98	'97	'98	'97	'98	'97	'98	'97
Mean	\$12,572	\$13,261	\$15,496	\$15,749	\$13,351	\$15,235	\$16,557	\$17,552
Median	\$10,000	\$11,500	\$12,300	\$12,500	\$10,833	\$13,675	\$13,325	\$14,521
Minimum	\$7,500	\$8,000	\$1,000	\$4,400	\$8,000	\$9,000	\$5,000	\$5,000
Maximum	\$30,000	\$33,000	\$58,000	\$59,000	\$30,000	\$40,400	\$59,000	\$74,000

Table 4. Basic salary and gross income

* HKU average refers to the figure for the total HKU population and includes M.B.,B.S. and B.D.S. graduates.

VII. Number of Full-Time Job Offers

Of those in full-time employment, 52% of the graduates had more than one job offer. 22% reported having received three to six job offers. On average, each graduate received 1.8 job offers. (Figure 4)

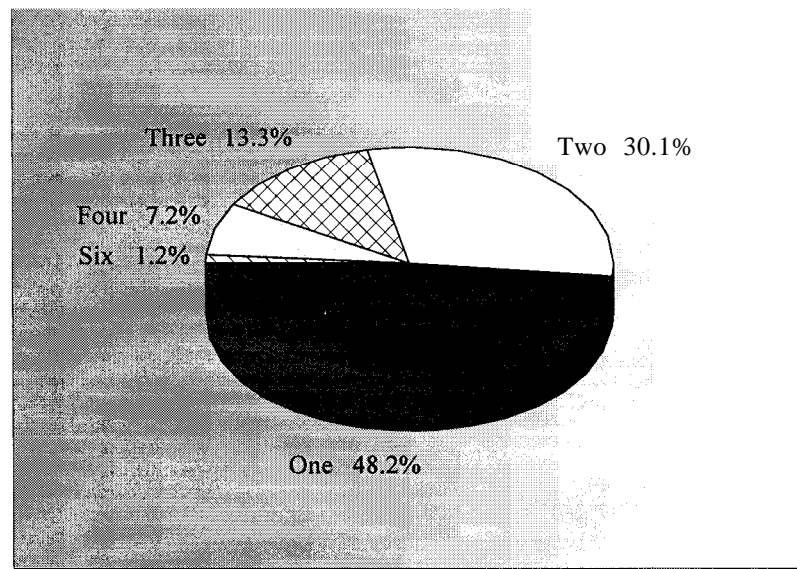


Figure 4. No. of full-time job offers

Where did the 1998 B.Soc.Sc. graduates go ?

VIII. Names of employers and job titles

The job titles of the B.Soc.Sc. graduates in full-time employment and the names of their employers are listed below.

<u><i>Employers :</i></u>	<u><i>Job Titles :</i></u>
CIVIL SERVICE -	
<ul style="list-style-type: none">. HKSAR. HKSAR - Environmental Protection Department. HKSAR - Home Affairs Department. HKSAR - Hong Kong Monetary Authority. HKSAR - Hong Kong Police Force. HKSAR - Information Services Department. HKSAR - Labour Department. HKSAR - Labour Department. HKSAR - Management Services Agency. HKSAR - Trade Department	<ul style="list-style-type: none">• Assistant Information Officer• Executive Officer• Chinese Language Officer• Clerk• Inspector• Assistant Information Officer• Assistant Labour Officer• Assistant Labour Officer• Management Services Officer• Assistant Trade Officer
EDUCATION -	
<ul style="list-style-type: none">. Carmel Bunnan Tong Memorial Secondary School. SKH Yan Lap Primary School. St Gloria College. St Joseph's Anglo-Chinese School• The Chinese University of Hong Kong• The Chinese University of Hong Kong• The Hong Kong Polytechnic University. The University of Hong Kong• The University of Hong Kong. The University of Hong Kong. TKDS Fong Shu Chuen School	<ul style="list-style-type: none">• Graduate Master• Certificate Master• Graduate Master• Graduate Master• Research Assistant• Teaching Assistant• Research Assistant• Executive Officer• Research Assistant• Research Assistant• Research Assistant• Certificate Master
COMMUNITY, SOCIAL & PERSONAL SERVICES -	
<ul style="list-style-type: none">• Association for Engineering & Medical Volunteer Services• Brilliant Learning Centre• Friends of the Earth• Hong Kong Arts Festival Society• Hong Kong Sports Development Board• Jumpin Gym USA Ltd• Remarkable Tutorial Centre• Standing Committee on Language Education & Research• The British Council• Trade Development Council	<ul style="list-style-type: none">• Assistant Placement Officer• Tutor• Project Officer• Customer Service Officer• Research Assistant• Shop Management Trainee• Training Officer• Research Assistant• Education Assistant• Marketing Officer
COMMERCE & INDUSTRY -	
<ul style="list-style-type: none">• Bambi (HK) Ltd. Bossini	<ul style="list-style-type: none">• Administrative Assistant• Human Resources Assistant

Where did the 1998 B.Soc.Sc. graduates go ?

• British Telecom (HK)	• Customer Service Assistant
• Caring International (HK) Ltd	• Marketing Executive
• City Telecom	• Account Manager
• Computer Forms (HK) Ltd	• Sales Executive
• Creative Master Ltd	• Administration Assistant
• Dairy Farm	• Management Trainee
• Dairy Farm	• Management Trainee
• Dandy Interior Product Ltd	• Sales Support Administrator
• Data Personnel	• Recruitment Supervisor Trainee
• Deacons Graham & James	• Patent Assistant
• Dickson Concepts (International) Ltd	• Marketing Executive
• Eagle Star Insurance Co Ltd	• Insurance Consultant
• Ernst & Young	• Staff Accountant
• Fuk Hing Industries Co Ltd	• Secretary
• Giordano Ltd	• Management Trainee
• Giordano Ltd	• Management Trainee
• Glorious Sun Enterprises Ltd	• R & D Assistant
• Gold Mail Box (HK) Ltd	• Marketing Executive
• HK Toy Centre	• Export Sales Executive
• Huang Kwan & Associates	• Customer Relation Officer
• Japan Airlines	• Flight Operations Officer
• Jardine Securior Group	• Contract Administrator
• Jovian Financial Communications Ltd	• Account Executive
• Jumpin Gym (USA) Ltd	• Purchasing Officer
• Kwan Cheong Ho Co Ltd	• Sales Representative
• M & M Properties Ltd	• Administration Assistant
• Mattel Vendor Operations Asia Ltd	• Planner
• NACO International Ltd	• Sales Representative
• Nan Fung Development Ltd	• Secretary
• Nelson Jewelry	• Sales Executive
• New Bright Industrial Co Ltd	• Executive Trainee
• Occasions PR Network	• Account Executive
• Ogden Aviation (HK) Ltd	• Passenger Service Officer
• Oxford University Press	• Editorial Assistant
• PricewaterhouseCoopers	• Business Services Associate
• Procter & Gamble	• Account Executive
• S & H Co Ltd	• Executive Assistant
• S Square	• Management Trainee
• San Diego Business Development Office, Asia	• Project Assistant
• Sofres FSA	• Research Executive
• Staci Ltd	• Customer Services Executive
• Star Focus International Co Ltd	• Marketing Executive
• Strategic Focus Research & Consultancy Ltd	• Research Executive
• Sui Wo Timber Co Ltd	• Administrative Assistant
• Target Promotion Co	• Business Development Executive
• The Prudential Assurance Co Ltd	• Insurance Consultant
• Tong Zhi Tang Group	• Management Trainee
• Toshiba Electronics Asia, Ltd	• Clerk
• Victory Trend Development Ltd	• Assistant Manager
• Watson Wyatt HK Ltd	• Associate Analyst
• Worldwide Convention	• Marketing Officer

Table 5. List of employers and job titles

Note : Some alumni have indicated willingness to talk to individual students about their work. Their contact telephone number can be obtained from **counsellors** at CEPC.

Where did the 1998 B.Soc.Sc. graduates go ?

- IX.** Similar information on graduates from other disciplines of study are available for reference in the Careers Library. Please enquire with the CEPC.

Careers Education and Placement Centre
3/F Wong Chuang Lai Wah Building
Meng Wah Complex
The University of Hong Kong
Pokfulam Road
Hong Kong

Telephone : 28592314
Fax : 2559 5238
E-Mail : CEPC@HKUCC.HKU.HK
Homepage : <http://www.hku.hk/cepc>

Opening Hours : Monday - Friday (9:00 a.m. to 5:30 p.m.)
Saturday (9:00 a.m. to 12:00 p.m.)

Cindy Chan

June, 1999

The analysis is based on information provided by the respondents, and the Careers Education & Placement Centre should not be held responsible for any errors arising therefrom.

No part of this report may be reproduced in any form or by whatever means, without written permission from the Director of the Careers Education and Placement Centre, The University of Hong Kong