

## Where did the 1998 B.Sc. - Earth Science graduates go ?

### I. Introduction

The information contained in this paper is extracted from the Graduate Employment Survey of 1998 to answer the following questions about Bachelor of Science graduates with major in Earth Science : -

- How were they employed six months after graduation ?
- Of those who were employed full-time, how long did it take them to secure their first job offer ?
- In which sector were they employed ?
- How much did they receive in salary ?
- How many job offers did they receive ?
- Who were their employers and what were their job titles ?

### II. Employment Situation in 1998

Of the 21 respondents who majored in Earth Science, 71% (or 15 graduates) were in full-time employment within six months of graduation. The remaining 29% (or 6 graduates) were still seeking full-time employment at the time of the survey. (Table 1)

	B.Sc. - Earth Science										HKU Overall*					
	Total				Male				Female							
	'98		'97		'98		'97		'98		'97		'98		'97	
	No.	%	No.	%	No.	%	No.	%	No.	%	No.	%	No.	%	No.	%
<i>No. of respondents</i>	21	100	24	100	10	100	12	100	11	100	12	100	2383	100	2272	100
<i>F/T employed</i>	15	71.4	21	87.5	6	60.0	11	91.7	9	81.8	10	83.4	1701	71.4	1829	80.5
<i>P/T employed seeking F/T job</i>	3	14.3	0	0	2	20.0	0	0	1	9.1	0	0	94	3.9	37	1.6
<i>Unemployed seeking F/T job</i>	3	14.3	2	8.3	2	20.0	1	8.3	1	9.1	1	8.3	157	6.6	53	2.3
<i>Further studies</i>	0	0	1	4.2	0	0	0	0	0	0	1	8.3	413	17.3	339	14.9
<i>Emigration/home country</i>	0	0	0	0	0	0	0	0	0	0	0	0	3	0.1	4	0.2
<i>Not seeking F/T job</i>	0	0	0	0	0	0	0	0	0	0	0	0	15	0.6	10	0.4

Table 1. Employment situation

\* HKU overall refers to the figure for the total HKU population and includes M.B.,B.S. and B.D.S. graduates.

# Where did the 1998 B.Sc. - Earth Science graduates go ?

## III. Time Taken to Secure Employment

Among those graduates who were in full-time employment, 87% secured their first job offer before the end of September. The figure increased to 100% by the end of October. (Figure 1)

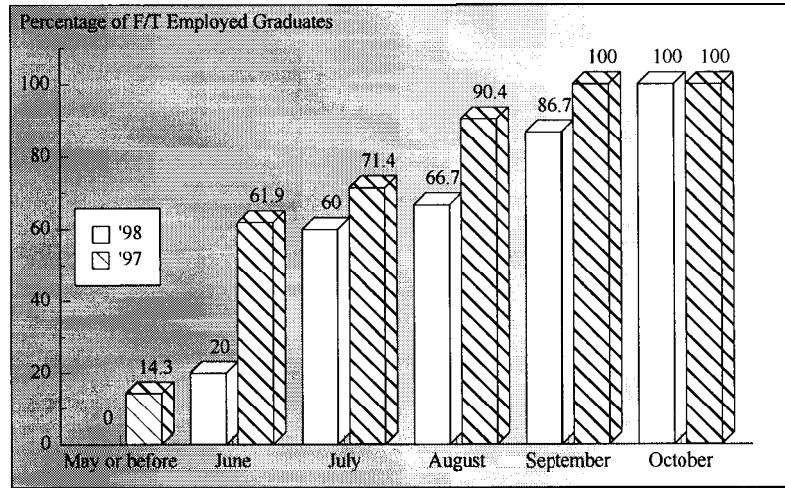


Figure 1. Time taken to secure employment

## IV. Employment Sectors

73% (or 11 graduates) of the Earth Science graduates were employed in commerce & industry, followed by 27% (or 4 graduates) in the civil service. (Figures 2 & 3)

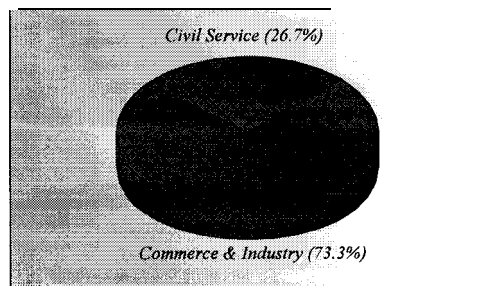


Figure 2. Employment sectors

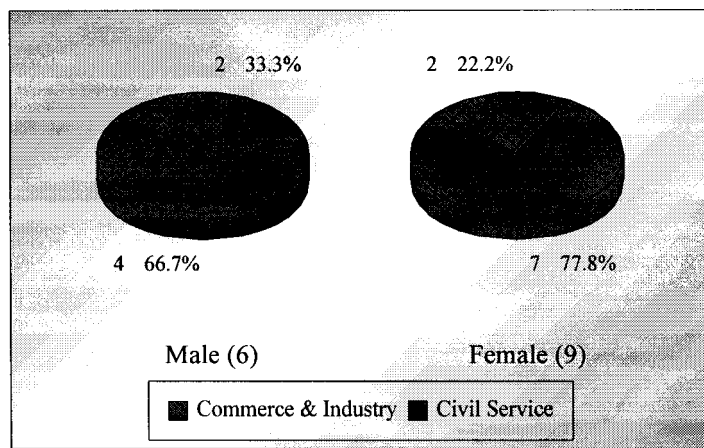


Figure 3. Employment sectors by sex

## Where did the 1998 B.Sc. - Earth Science graduates go ?

### V. Basic Salary and Gross Income

The remuneration received by Earth Science graduates is shown in Table 2.

	<i>Basic Salary</i>				<i>Gross Income</i>			
	<b>B.Sc. - Earth Science</b>		<b>HKU Average*</b>		<b>B.Sc. - Earth Science</b>		<b>HKU Average*</b>	
	'98	'97	'98	'97	'98	'97	'98	'97
<i>Mean</i>	\$13,513	\$13,712	\$15,496	\$15,749	\$14,441	\$15,187	\$16,557	\$17,552
<i>Median</i>	\$12,000	\$14,300	\$12,300	\$12,500	\$13,000	\$16,088	\$13,325	\$14,521
<i>Minimum</i>	\$8,000	\$7,500	\$1,000	\$4,400	\$8,000	\$8,125	\$5,000	\$5,000
<i>Maximum</i>	\$21,010	\$17,145	\$58,000	\$59,000	\$21,010	\$21,417	\$59,000	\$74,000

Table 2. Basic salary and gross income

\* HKU average refers to the figure for the total HKU population and includes M.B., B.S. and B.D.S. graduates.

### VI. Number of Full-Time Job Offers

Of those in full-time employment, 53% of the graduates had more than one job offer. 27% reported having received three to five job offers. (Figure 4)

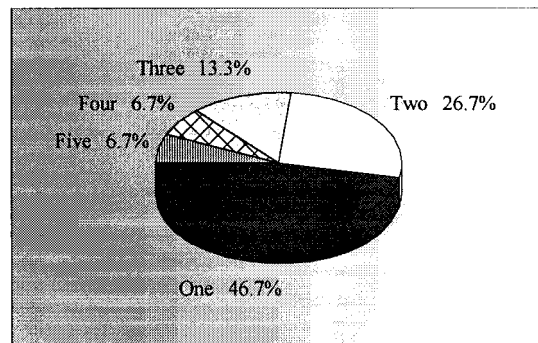


Figure 4. No. of full-time job offers

### VII. Names of Employers and Job Titles

The job titles of the Earth Science graduates in full-time employment and the names of their employers are listed below.

<u><i>Employers :</i></u>	<u><i>Job Titles :</i></u>
<b>CIVIL SERVICE -</b>	
• HKSAR - Civil Engineering Department	• Engineering Geology Graduate
• HKSAR - Civil Engineering Department	• Engineering Geology Graduate
• HKSAR - Civil Engineering Department	• Engineering Geology Graduate

## Where did the 1998 B.Sc. - Earth Science graduates go ?

### COMMERCE & INDUSTRY -

- |   |                                   |
|---|-----------------------------------|
| • Bumatech Co Ltd                       | . Marketing Officer               |
| • Chi Shing Drilling Engineering Co Ltd | . Assistant Geologist             |
| • Chung Shun Boring Engineering Co Ltd  | • Geologist                       |
| • ESA Consulting Engineers Co Ltd       | . Assistant Engineering Geologist |
| • Foundation Technical Ltd              | . Technical Engineer              |
| • Gammon Construction Ltd               | . Assistant Geologist             |
| • MMBPI                                 | . Engineering Geologist           |
| • Montgomery Watson (HK) Ltd            | . Assistant Resident Engineer     |
| • Next Media                            | . Copywriter                      |
| • Terraform-FGS Ltd                     | . Assistant Geologist             |
| • Organization's name not reported      | . Applications Engineer           |

No Response = 1

Table 3. List of employers and job titles

Note : Some alumni have indicated willingness to talk to individual students about their work. Their contact telephone number can be obtained from counsellors at CEPC.

**VIII.** Similar information on graduates from other disciplines of study is available for reference in the Careers Library. Please enquire with the CEPC.

Careers Education and Placement Centre  
3/F Wong Chuang Lai Wah Building  
Meng Wah Complex  
The University of Hong Kong  
Pokfulam Road  
Hong Kong

Telephone : 28592314  
Fax : 2559 5238  
E-Mail : CEPC@HKUCC.HKU.HK  
Homepage : <http://www.hku.hk/cepc>

Opening Hours : Monday - Friday (9:00 a.m. to 5:30 p.m.)  
Saturday (9:00 a.m. to 12:00 p.m.)

Cindy Chan

August, 1999

The analysis is based on information provided by the respondents, and the Careers Education & Placement Centre should not be held responsible for any errors arising therefrom.

No part of this report may be reproduced in any form or by whatever means, without written permission from the Director of the Careers Education and Placement Centre, The University of Hong Kong