

Where did the 1998 B.Sc. (Comp.Sc.) graduates go ?

I. Introduction

The information contained in this paper is extracted from the Graduate Employment Survey of 1998 to answer the following questions about Bachelor of Science in Computer Science graduates : -

- How were they employed six months after graduation ?
- Of those who pursued further studies, what programmes did they follow ?
- Of those who were employed full-time, how long did it take them to secure their first job offer ?
- In which sectors were they employed ?
- How much did they receive in salary ?
- How many job offers did they receive ?
- Who were their employers and what were their job titles ?

II. Employment Situation in 1998

Out of 79 B.Sc.(Comp.Sc.) graduates, 73 responded to our survey, representing a response rate of 92%. Of these, 95% (or 69 graduates) were in full-time employment within six months of graduation. 2.7% (or 2 graduates) went on for further studies. Another 2.7% (or 2 graduates) were still seeking full-time employment at the time of the survey. (Table 1)

	B.Sc.(Comp.Sc.)								HKU Overall*							
	Total				Male				Female							
	'98		'97		'98		'97		'98		'97					
	No.	%	No.	%	No.	%	No.	%	No.	%	No.	%				
<i>No. of respondents</i>	73	100	63	100	50	100	44	100	23	100	19	100	2383	100	2272	100
<i>F/T employed</i>	69	94.5	60	95.2	46	92.0	41	93.2	23	100	19	100	1701	71.4	1829	80.5
<i>P/T employed seeking F/T job</i>	0	0	0	0	0	0	0	0	0	0	0	0	94	3.9	37	1.6
<i>Unemployed seeking F/T job</i>	2	2.7	0	0	2	4.0	0	0	0	0	0	0	157	6.6	53	2.3
<i>Further studies</i>	2	2.7	3	4.8	2	4.0	3	6.8	0	0	0	0	413	17.3	339	14.9
<i>Emigration/home country</i>	0	0	0	0	0	0	0	0	0	0	0	0	3	0.1	4	0.2
<i>Not seeking F/T job</i>	0	0	0	0	0	0	0	0	0	0	0	0	15	0.6	10	0.4

Table 1. Employment situation

* HKU overall refers to the figure for the total HKU population and includes M.B.,B.S. and B.D.S. graduates.

Where did the 1998 B.Sc.(Comp.Sc.) graduates go ?

III. Further Studies

Two graduates pursued postgraduate studies in the same discipline as their first degree. Of these, one graduate was enrolled in a local tertiary institution and the other went abroad to U.S.A.. Table 2 shows the academic programme pursued & Table 3 shows the source of finance.

Field of Study	Academic Programme
	M.Phil.
Computer Science	

Table 2. Academic programme

Source of Finance	No. of Graduates
Teaching Assistantship/Studentship	1
Scholarship & Own Funds	1

Table 3. Source of finance for further studies

IV. Time Taken to Secure Employment

Among those graduates who were in full-time employment, 97% secured their first job offer before the end of September. The figure increased to 100% by the end of November. (Figure 1)

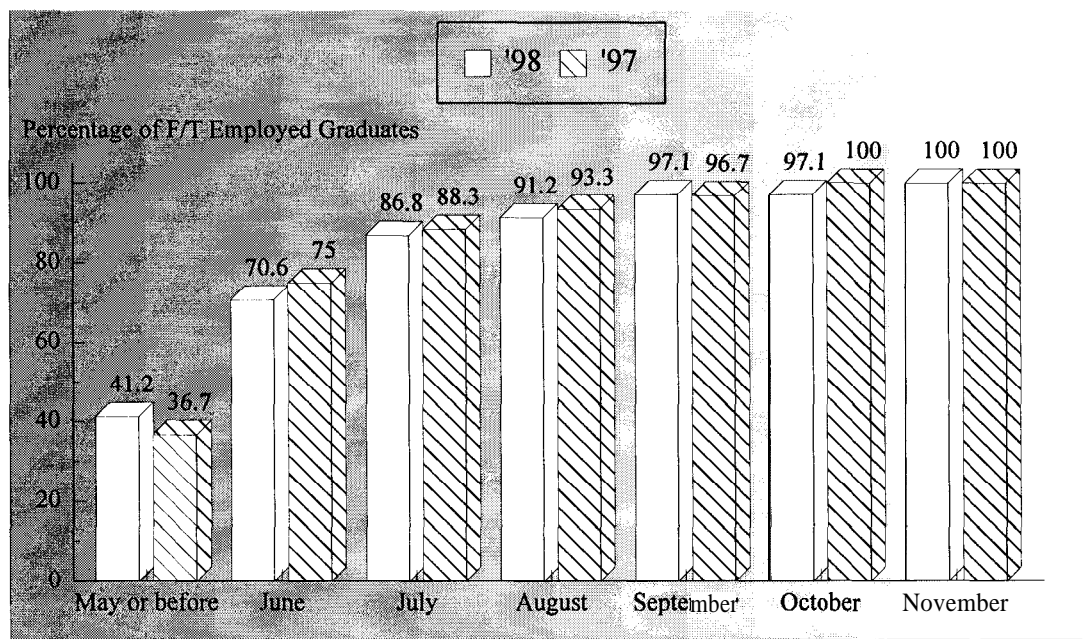


Figure 1. Time taken to secure employment

Where did the 1998 B.Sc.(Comp.Sc.) graduates go ?

V. Employment Sectors

Most (87% or 60 graduates) of the B.Sc.(Comp.Sc.) graduates were employed in commerce & industry, followed by 12% (or 8 graduates) in the education sector. Another 1.4% (or 1 graduate) joined the civil service. (Figures 2 & 3)

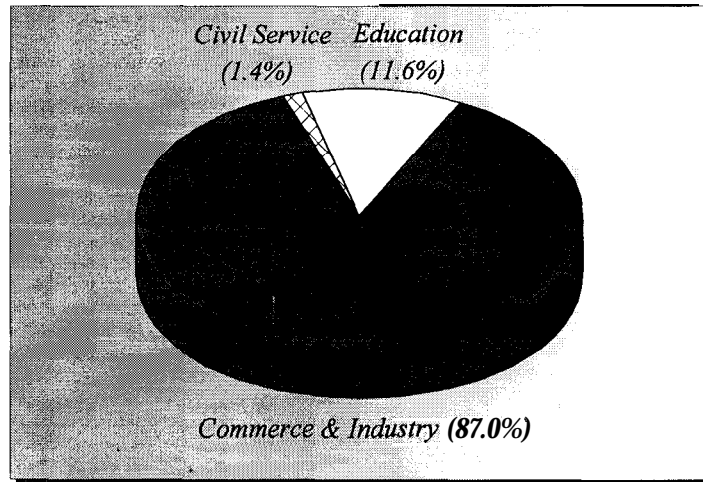


Figure 2. Employment sectors

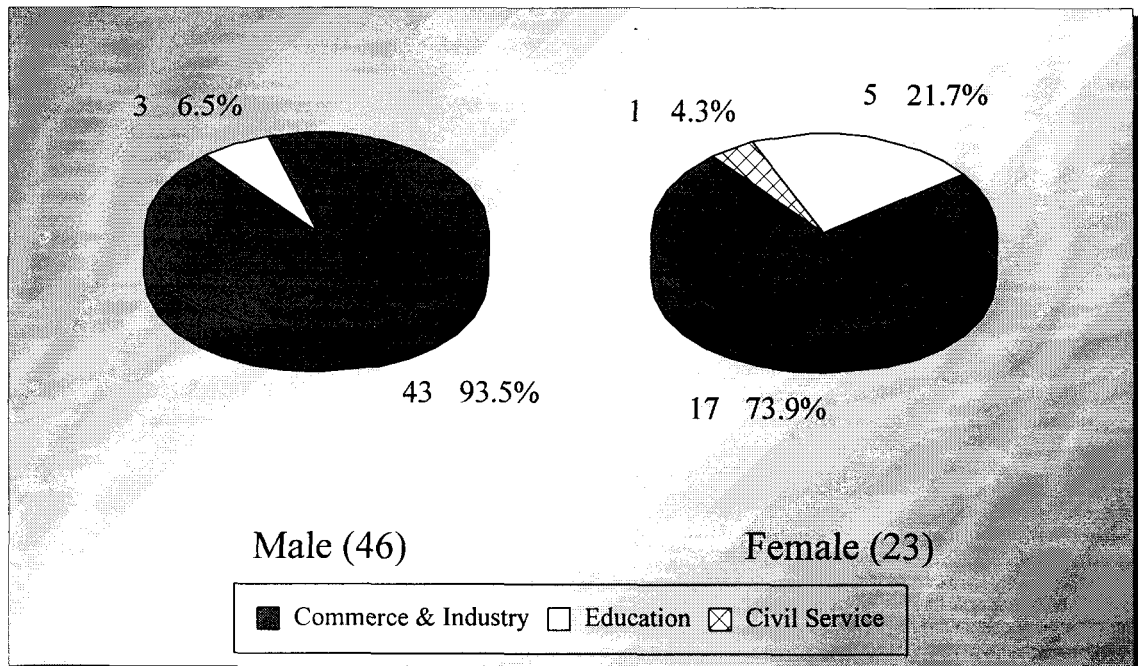


Figure 3. Employment sectors by sex

Where did the 1998 B.Sc.(Comp.Sc.) graduates go ?

VI. Basic Salary and Gross Income

The remuneration received by the B.Sc.(Comp.Sc.) graduates is shown in Table 4.

	Basic Salary				Gross Income			
	B.Sc.(Comp.Sc.)		HKU Average*		B.Sc.(Comp.Sc.)		HKU Average*	
	'98	'97	'98	'97	'98	'97	'98	'97
Mean	\$13,865	\$14,300	\$15,496	\$15,749	\$15,079	\$15,727	\$16,557	\$17,552
Median	\$13,650	\$13,800	\$12,300	\$12,500	\$14,653	\$15,375	\$13,325	\$14,521
Minimum	\$8,000	\$8,940	\$1,000	\$4,400	\$8,000	\$11,000	\$5,000	\$5,000
Maximum	\$35,285	\$22,000	\$58,000	\$59,000	\$35,285	\$22,000	\$59,000	\$74,000

Table 4. Basic salary and gross income

* HKU average refers to the figure for the total HKU population and includes M.B., B.S. and B.D.S. graduates.

VII. Number of Full-Time Job Offers

Of those in full-time employment, 65% of the graduates had more than one job offer. 39% reported having received three to seven job offers. Same as last year, each graduate received 2.3 job offers on average. (Figure 4)

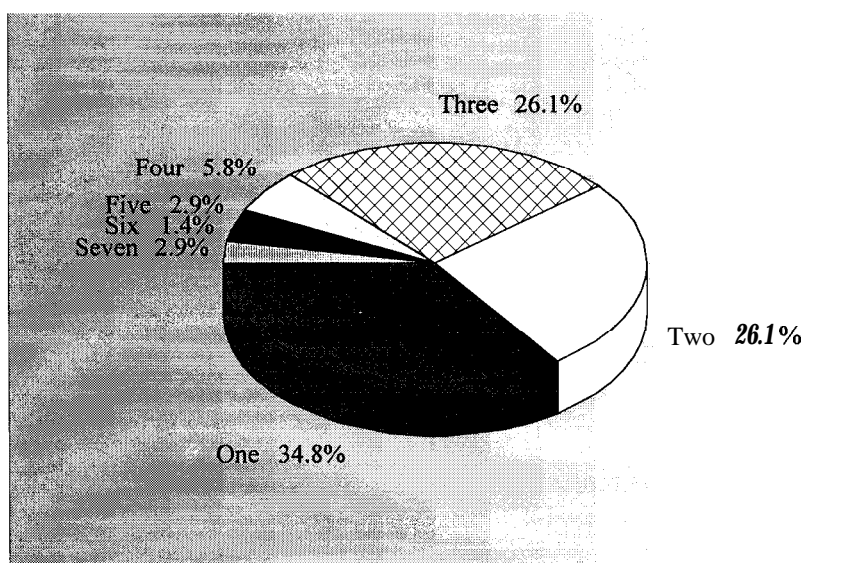


Figure 4. No. of full-time job offers

Where did the 1998 B.Sc.(Comp.Sc.) graduates go ?

• HongkongBank	• System Analyst/Programmer
• HongkongBank	• System Analyst/Programmer
• HongkongBank	• System Analyst/Programmer
• HongkongBank	• System Analyst/Programmer
• HongkongBank	• System Analyst/Programmer
• ICO Ltd	• Software Engineer
• ICO Ltd	• Software Engineer
• Insight Computer Consultant Ltd	• Analyst Programmer
• Leccd Consultants Ltd	• Junior Consultant
• Link Fortune Ltd	• Web Page Designer
• Maersk (HK) Ltd	• Customer Services Trainee
• Mypal Integral Software Ltd	• Intranet Developer
• National Mutual Insurance Co Ltd	• Programmer
• New World Telephone	• Programmer
• Nomura Research Institute	• Programmer
• Orient Overseas Container Lines Ltd	• Assistant Technical Analyst
• P C Live Publication	• Reporter
• Regaltronics Ltd	• Programmer
• Reuters Asia Pte Ltd	• Development Engineer
• Reuters Asia Pte Ltd	• Development Programmer
• SAP Hong Kong Co Ltd	• Associate Consultant
• Sea-Land Service Inc	• Contract Programmer
• Shell Co	• System Support Assistant
• SHK Financial Data Ltd	• Programmer
• Shun Hung Electronic Trading Co Ltd	• Programmer
• Swire Properties Ltd	• Management Trainee
• Systemek Information Technology Ltd	• Software Consultant
• Systemek Information Technology Ltd	• Software Engineer
• Tai Fook Securities Co Ltd	• Programmer
• The Hong Kong & China Gas Co Ltd	• Information Technology Graduate Trainee
• Wing Lung Bank	• Junior Programmer
• Organization's name not reported	• Computer Project Officer
• Organization's name not reported	• Graduate Programmer

No Response = 1.

Table 5. List of employers and job titles

Note : Some alumni have indicated willingness to talk to individual students about their work. Their contact telephone number can be obtained from **counsellors** at CEPC.

Where did the 1998 B.Sc. (Comp.Sc.) graduates go ?

- IX.** Similar information on graduates from other disciplines of study are available for reference in the Careers Library. Please enquire with the CEPC.

Careers Education and Placement Centre
3/F Wong Chuang Lai Wah Building
Meng Wah Complex
The University of Hong Kong
Pokfulam Road
Hong Kong

Telephone : 28592314
Fax : 2559 5238
E-Mail : CEPC@HKUCC.HKU.HK
Homepage : <http://www.hku.hk/cepc>

Opening Hours : Monday - Friday (9:00 a.m. to 5:30 p.m.)
Saturday(9:00 a.m. to 12:00 p.m.)

Cindy Chan

June, 1999

The analysis is based on information provided by the respondents, and the Careers Education & Placement Centre should not be held responsible for any errors arising therefrom.

No part of this report may be reproduced in any form or by whatever means,
without written permission from the Director of the Careers Education and Placement Centre,
The University of Hong Kong