

# Where did the 1998 B.Sc. - Computational Mathematics & Operational Research graduates go ?

## I. Introduction

The information contained in this paper is extracted from the Graduate Employment Survey of 1998 to answer the following questions about Bachelor of Science graduates with major in Computational Mathematics & Operational Research : -

- How were they employed six months after graduation ?
- Of those who pursued further studies, what programmes did they follow ?
- Of those who were employed full-time, how long did it take them to secure their first job offer ?
- In which sectors were they employed ?
- How much did they receive in salary ?
- How many job offers did they receive ?
- Who were their employers and what were their job titles ?

## II. Employment Situation in 1998

Of the 22 respondents who majored in Computational Mathematics & Operational Research, 73% (or 16 graduates) were in full-time employment within six months of graduation. 9% (or 2 graduates) went on for further studies. Another 18% (or 4 graduates) were still seeking full-time employment at the time of the survey. (Table 1)

	B.Sc. - Computational Mathematics & Operational Research						HKU Overall*	
	Total		Male		Female			
	'98		'98		'98			
	No.	%	No.	%	No.	%	No.	%
<i>No. of respondents</i>	22	100	9	100	13	100	2383	100
<i>F/T employed</i>	16	72.7	8	88.9	8	61.5	1701	71.4
<i>P/T employed seeking F/T job</i>	4	18.2	0	0	4	30.8	94	3.9
<i>Unemployed seeking F/T job</i>	0	0	0	0	0	0	157	6.6
<i>Further studies</i>	2	9.1	1	11.1	1	7.7	413	17.3
<i>Emigration/home country</i>	0	0	0	0	0	0	3	0.1
<i>Not seeking F/T job</i>	0	0	0	0	0	0	15	0.6

Table 1. Employment situation

\* HKU overall refers to the figure for the total HKU population and includes M.B.,B.S. and B.D.S. graduates.

# Where did the 1998 B.Sc. - Computational Mathematics & Operational Research graduates go ?

---

## III. Further Studies

There were two graduates pursued postgraduate studies. They both took up a M.Phil. programme in the same discipline. Table 2 shows the academic programme pursued & Table 3 shows the source of finance.

Field of Study	Academic Programme
	M.Phil.
Science	2

Table 2. Academic programmes

Source of Finance	No. of Graduates
Teaching Assistantship/Studentship	2

Table 3. Source of finance for further studies

## IV. Time Taken to Secure Employment

Among those graduates who were in full-time employment, 8 1% secured their first job offer before the end of August. The figure increased to 100% by the end of December. (Figure 1)

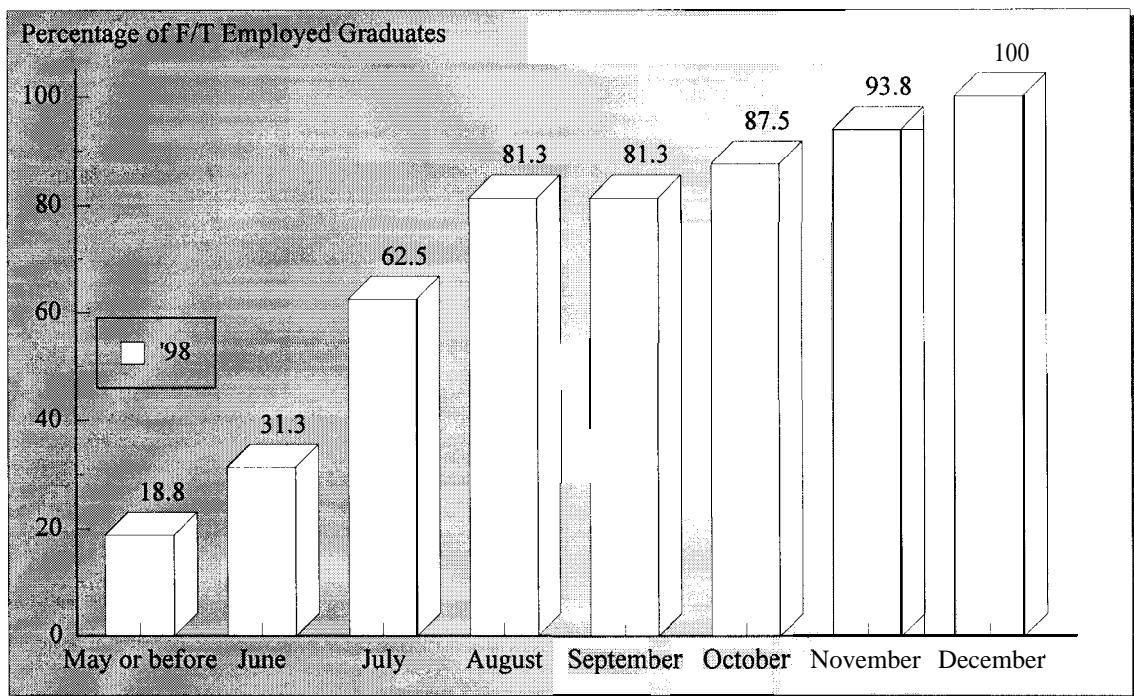


Figure 1. Time taken to secure employment

# Where did the 1998 B.Sc. - Computational Mathematics & Operational Research graduates go ?

## V. Employment Sectors

63% (or 10 graduates) of the Computational Mathematics & Operational Research graduates were employed in commerce & industry, followed by 19% (or 3 graduates) in education and 13% (or 2 graduates) in community, social & personal services. The remaining 6.3% (or 1 graduate) joined the civil service. (Figures 2 & 3)

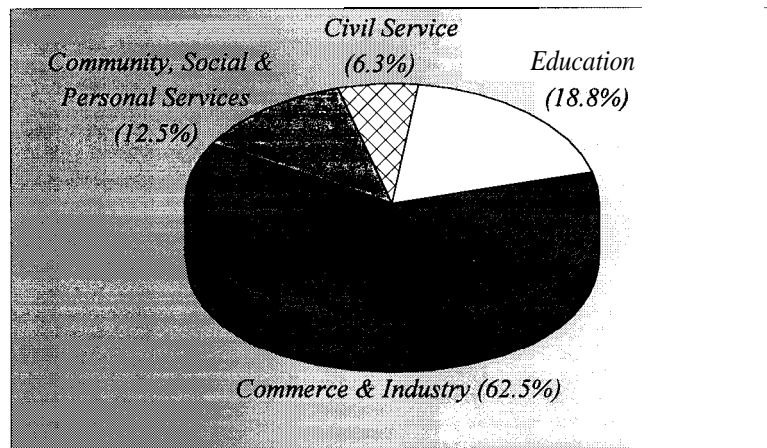


Figure 2. Employment sectors

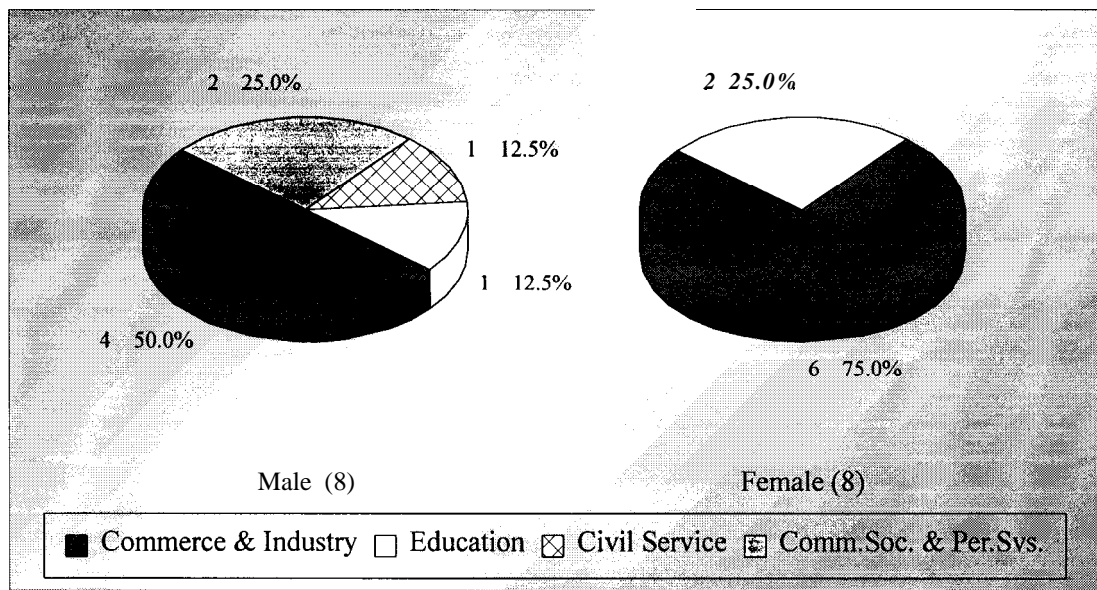


Figure 3. Employment sectors by sex

# Where did the 1998 B.Sc. - Computational Mathematics & Operational Research graduates go ?

---

## VI. Basic Salary and Gross Income

The remuneration received by the Computational Mathematics & Operational Research graduates is shown in Table 4.

	<i>Basic Salary</i>		<i>Gross Income</i>	
	<b>B.Sc. - Computational Mathematics &amp; Operational Research</b>	<b>HKU Average*</b>	<b>B.Sc. - Computational Mathematics &amp; Operational Research</b>	<b>HKU Average*</b>
	'98	'98	'98	'98
<i>Mean</i>	\$11,630	\$15,496	\$12,270	\$16,557
<i>Median</i>	\$9,998	\$12,300	\$10,542	\$13,325
<i>Minimum</i>	<b>\$8,000</b>	\$1,000	\$8,000	\$5,000
<i>Maximum</i>	\$20,000	\$58,000	\$20,000	\$59,000

Table 4. Basic salary and gross income

\* HKU average refers to the figure for the total HKU population and includes M.B.,B.S. and B.D.S. graduates.

## VII. Number of Full-Time Job Offers

Of those in full-time employment, 56% of the graduates had more than one job offer. 25% reported having received three to five job offers. (Figure 4)

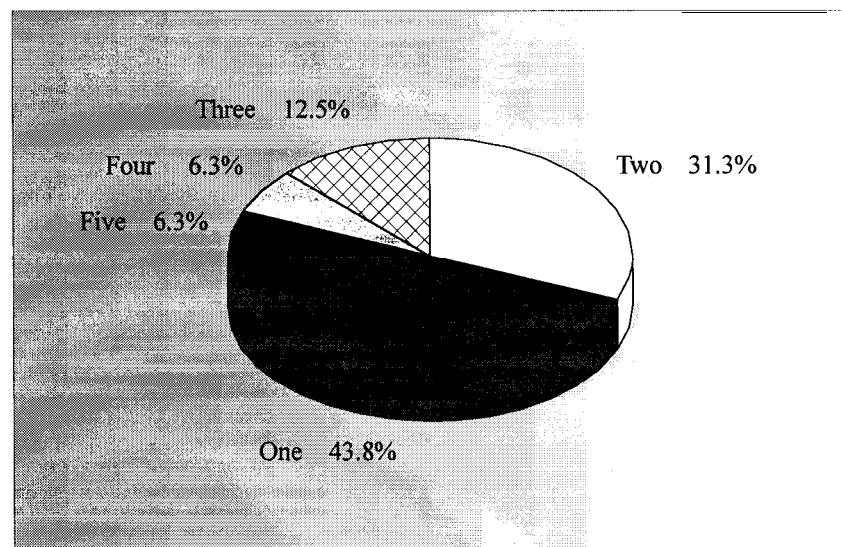


Figure 4. No. of full-time job offers

# ***Where did the 1998 B.Sc. - Computational Mathematics & Operational Research graduates go ?***

---

## **VIII. Names of Employers and Job Titles**

The job titles of the Computational Mathematics & Operational Research graduates in full-time employment and the names of their employers are listed below.

<u><b>Employers :</b></u>	<u><b>Job Titles :</b></u>
<b>CIVIL SERVICE -</b>	
• HKSAR - Urban Services Department	• Student Health Inspector
<b>EDUCATION -</b>	
• Aberdeen Technical School	• Graduate Master
• YCH Lan Chi Pat Memorial Secondary School	• Certificate Master
• Organization's name not reported	• Certificate Master
<b>COMMUNITY, SOCIAL &amp; PERSONAL SERVICES -</b>	
• Kwong Wah Hospital	• Human Resources Assistant
<b>COMMERCE &amp; INDUSTRY -</b>	
• Crystal Group of Co	• Material Utilization Assistant
• First Management Co	• Coordinator
• Manhattan Press (HK) Ltd	• Assistant Editor
• Midas Printing Ltd	• Production Management Trainee
• Multiable Co	• Programmer
• MVA (HK) Ltd	• Graduate Transport Planner
• SNK Asia Ltd	• Promotion Assistant
• Swing Industrial Ltd	• Computer Operator
• Tai Kai Construction & Transportation Co	• Assistant Safety Officer
• World Tracer Ltd	• Senior Marketing Assistant

Jo Response = 1

*Table 5. List of employers and job titles*

Note : Some alumni have indicated willingness to talk to individual students about their work. Their contact telephone number can be obtained from counsellors at CEPC.

## *Where did the 1998 B.Sc. - Computational Mathematics & Operational Research graduates go ?*

---

- IX.** Similar information on graduates from other disciplines of study is available for reference in the Careers Library. Please enquire with the CEPC.

Careers Education and Placement Centre  
3/F Wong Chuang Lai Wah Building  
Meng Wah Complex  
The University of Hong Kong  
Pokfulam Road  
Hong Kong

Telephone : 28592314  
Fax : 2559 5238  
E-Mail : [CEPC@HKUCC.HKU.HK](mailto:CEPC@HKUCC.HKU.HK)  
Homepage : <http://www.hku.hk/cepc>

Opening Hours : Monday - Friday (9:00 a.m. to 5:30 p.m.)  
Saturday (9:00 a.m. to 12:00 p.m.)

Cindy Chan

August, 1999

The analysis is based on information provided by the respondents, and the Careers Education & Placement Centre should not be held responsible for any errors arising therefrom.

No part of this report may be reproduced in any form or by whatever means,  
without written permission from the Director of the Careers Education and Placement Centre,  
The University of Hong Kong