

Where did the 1998 B.Sc. - Biochemistry graduates go ?

I. Introduction

The information contained in this paper is extracted from the Graduate Employment Survey of 1998 to answer the following questions about Bachelor of Science graduates with major in Biochemistry : -

- How were they employed six months after graduation ?
- Of those who pursued further studies, what programmes did they follow ?
- Of those who were employed full-time, how long did it take them to secure their first job offer ?
- In which sectors were they employed ?
- How much did they receive in salary ?
- How many job offers did they receive ?
- Who were their employers and what were their job titles ?

II. Employment Situation in 1998

Of the 25 respondents who majored in Biochemistry, 68% (or 17 graduates) were in full-time employment within six months of graduation. 20% (or 5 graduates) went on for further studies. Another 12% (or 3 graduates) were still seeking full-time employment at the time of the survey. (Table 1)

	B.Sc. - Biochemistry								HKU Overall*							
	Total				Male				Female							
	'98		'97		'98		'97		'98		'97					
	No.	%	No.	%	No.	%	No.	%	No.	%	No.	%				
<i>No. of respondents</i>	25	100	22	100	13	100	12	100	12	100	10	100	2383	100	2272	100
<i>F/T employed</i>	17	68.0	16	72.7	9	69.2	10	83.3	8	66.7	6	60.0	1701	71.4	1829	80.5
<i>P/T employed seeking F/T job</i>	1	4.0	0	0	1	7.7	0	0	0	0	0	0	94	3.9	37	1.6
<i>Unemployed seeking F/T job</i>	2	8.0	0	0	2	15.4	0	0	0	0	0	0	157	6.6	53	2.3
<i>Further studies</i>	5	20.0	6	27.3	1	7.7	2	16.7	4	33.3	4	40.0	413	17.3	339	14.9
<i>Emigration/home country</i>	0	0	0	0	0	0	0	0	0	0	0	0	3	0.1	4	0.2
<i>Not seeking F/T job</i>	0	0	0	0	0	0	0	0	0	0	0	0	15	0.6	10	0.4

Table 1. Employment situation

* HKU overall refers to the figure for the total HKU population and includes M.B.,B.S. and B.D.S. graduates.

Where did the 1998 B.Sc. - Biochemistry graduates go ?

III. Further Studies

Four graduates pursued postgraduate studies in the same discipline as their first degree. Of these, one graduate enrolled for a Ph.D. programme and three enrolled for a M.Phil. programme. One graduate took up a M. Phil. programme in medical science. Table 2 shows the academic programmes pursued & Table 3 shows the source of finance.

Fields of Study	Academic Programmes	
	Ph.D.	M.Phil.
Science	1	3
Medical Science		1

Table 2. Academic programme

Source of Finance	No. of Graduates
Teaching Assistantship/Studentship	5

Table 3. Source of finance for further studies

IV. Time Taken to Secure Employment

Among those graduates who were in full-time employment, 77% secured their first job offer before the end of September. The figure increased to 100% by the end of November. (Figure 1)

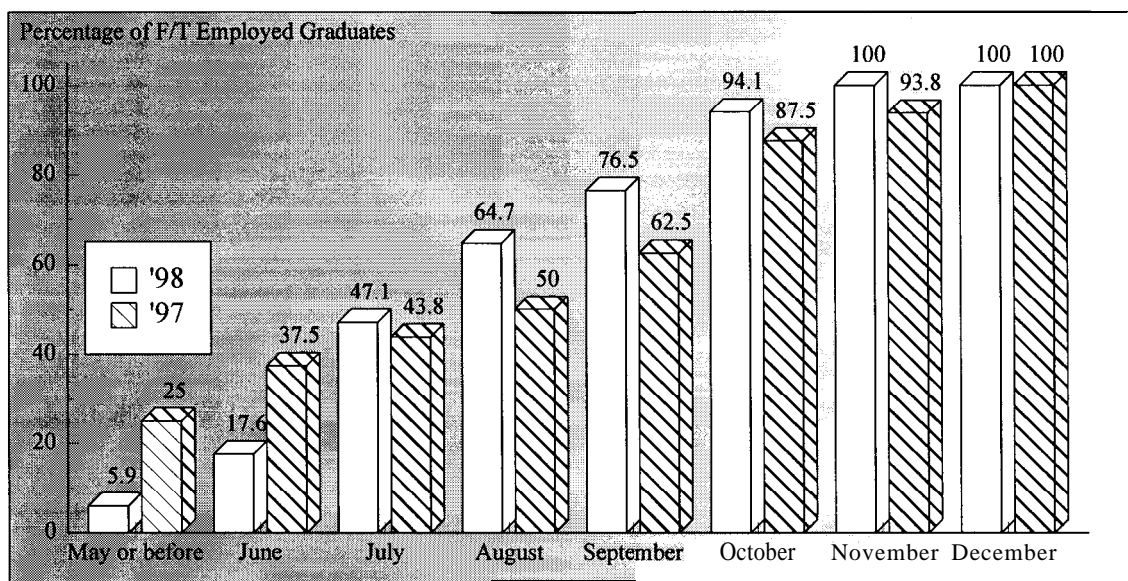


Figure 1. Time taken to secure employment

Where did the 1998 B.Sc. - Biochemistry graduates go ?

V. Employment Sectors

71% (or 12 graduates) of the Biochemistry graduates were employed in commerce & industry, followed by 12% (or 2 graduates) each in education and community, social & personal services. The remaining 6% (or 1 graduate) joined the civil service. (Figures 2 & 3.)

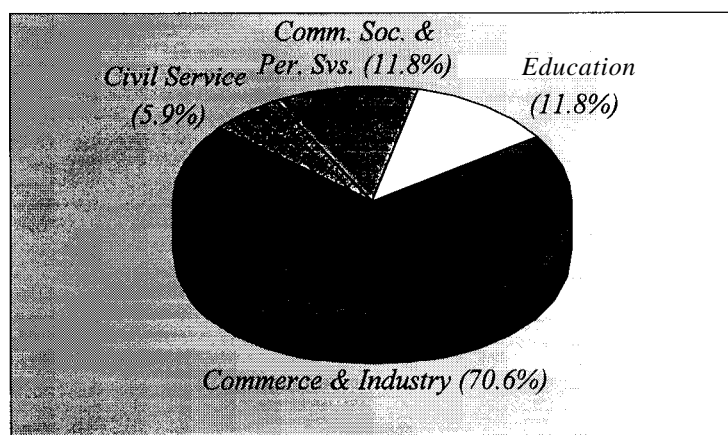


Figure 2. Employment sectors

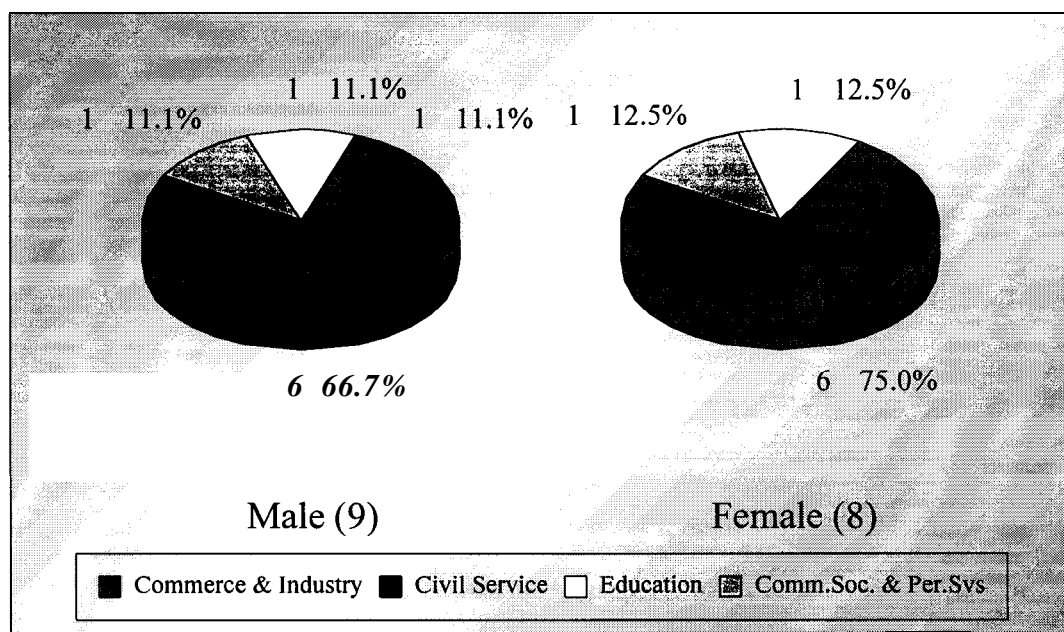


Figure 3. Employment sectors by sex

Where did the 1998 B.Sc. - Biochemistry graduates go ?

VI. Basic Salary and Gross Income

The remuneration received by the Biochemistry graduates is shown in the Table 4.

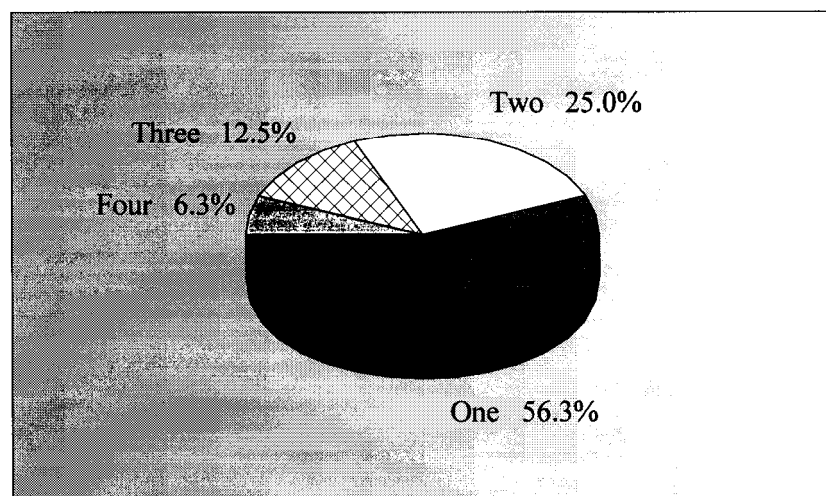
	Basic Salary				Gross Income			
	B.Sc. - Biochemistry		HKU Average*		B.Sc. - Biochemistry		HKU Average*	
	'98	'97	'98	'97	'98	'97	'98	'97
Mean	\$10,216	\$17,208	\$15,496	\$15,749	\$11,793	\$19,037	\$16,557	\$17,552
Median	\$9,825	\$12,500	\$12,300	\$12,500	\$11,125	\$13,530	\$13,325	\$14,521
Minimum	\$6,000	\$8,500	\$1,000	\$4,400	\$6,000	\$8,500	\$5,000	\$5,000
Maximum	\$15,000	\$54,000	\$58,000	\$59,000	\$21,000	\$74,000	\$59,000	\$74,000

Table 4. Basic salary and gross income

* HKU average refers to the figure for the total HKU population and includes M.B.,B.S. and B.D.S. graduates.

VII. Number of Full-Time Job Offers

Of those in full-time employment, 44% of the graduates had more than one job offer. 19% reported having received three or four job offers. (Figure 4).



No Response = 1

Figure 4. No. of full-time job offers

Where did the 1998 B.Sc. - Biochemistry graduates go ?

VIII. Names of Employers and Job Titles

The job titles of the Biochemistry graduates in full-time employment and the names of their employers are listed below.

<u>Employers :</u>	<u>Job Titles :</u>
CIVIL SERVICE -	
• HKSAR - Post Office	• Postal Officer
EDUCATION -	
• Mong Kok Workers' Children School	• Administrative Clerk
• The University of Hong Kong	• Research Assistant
COMMUNITY, SOCIAL & PERSONAL SERVICE -	
• The Conservancy Association	• Program Officer
• The Salvation Army Community & Study Centre	• Tutor
COMMERCE & INDUSTRY -	
• Amoy Food Ltd	• Research Technician
• Bio-Rad Pacific Ltd	• Project Coordinator
• Canadian Eastern Life Assurance Ltd	• Underwriter
• Chinetek Scientific	• Product Specialist
• Citicon Advertising & Direct Marketing	• Chinese Copywriter
• Eagle Star	• Senior Consultant
• Global Finance & Banking Services	• Information Technology Consultant
• Ocean Park Corporation	• Marine Mammal Handler
• Oriental Press Group	• Reporter
• Rhodia HK Ltd	• Medical Representative
• Tseyu International Trading Co Ltd	• Sales Executive
• Universal Pharmaceutical Lab Ltd	• Sales Representative

Table 5. List of employers and job titles

Note: Some alumni have indicated willingness to talk to individual students about their work. Their contact telephone number can be obtained from **counsellors** at CEPC.

Where did the 1998 B.Sc. - Biochemistry graduates go ?

- IX.** Similar information on graduates from other disciplines of study is available for reference in the Careers Library. Please enquire with the CEPC.

Careers Education and Placement Centre
3/F Wong Chuang Lai Wah Building
Meng Wah Complex
The University of Hong Kong
Pokfulam Road
Hong Kong

Telephone : 28592314
Fax : 2559 5238
E-Mail : CEPC@HKUCC.HKU.HK
Homepage : <http://www.hku.hk/cepc>

Opening Hours : Monday - Friday (9:00 a.m. to 5:30 p.m.)
Saturday (9:00 a.m. to 12:00 p.m.)

Cindy Chan

August, 1999

The analysis is based on information provided by the respondents, and the Careers Education & Placement Centre should not be held responsible for any errors arising therefrom.

No part of this report may be reproduced in any form or by whatever means,
without written permission from the Director of the Careers Education and Placement Centre,
The University of Hong Kong