

Where did the 1998 B. Fin. graduates go ?

I. Introduction

The information contained in this paper is extracted from the Graduate Employment Survey of 1998 to answer the following questions about Bachelor of Finance graduates : -

- . How were they employed six months after graduation ?
- . Of those who pursued further studies, what programmes did they follow ?
- Of those who were employed full-time, how long did it take them to secure their first job offer ?
- . In which sector were they employed ?
- . How much did they receive in salary ?
- . How many job offers did they receive ?
- Who were their employers and what were their job titles ?

II. Employment Situation in 1998

Out of 90 B.Fin. graduates, 77 responded to our survey, representing a response rate of 86%. Of these, 81% (or 62 graduates) were in full-time employment within six months of graduation. 10% (or 8 graduates) went on for further studies. Another 9.1% (or 7 graduates) were still seeking full-time employment at the time of the survey. (Table 1)

	B.Fin.								HKU Overall*							
	Total				Male				Female							
	'98		'97		'98		'97		'98		'97					
	No.	%	No.	%	No.	%	No.	%	No.	%	No.	%				
<i>No. of respondents</i>	77	100	35	100	40	100	23	100	37	100	12	100	2383	100	2272	100
<i>F/T employed</i>	62	80.5	30	85.7	26	65.0	21	91.3	36	97.3	9	75.0	1701	71.4	1829	80.5
<i>P/T employed seeking F/T job</i>	1	1.3	2	5.7	1	2.5	0	0	0	0	2	16.7	94	3.9	37	1.6
<i>Unemployed seeking F/T job</i>	6	7.8	1	2.9	5	12.5	1	4.3	1	2.7	0	0	157	6.6	53	2.3
<i>Further studies</i>	8	10.4	2	5.7	8	20.0	1	4.3	0	0	1	8.3	413	17.3	339	14.9
<i>Emigration/home country</i>	0	0	0	0	0	0	0	0	0	0	0	0	3	0.1	4	0.2
<i>Not seeking F/T job</i>	0	0	0	0	0	0	0	0	0	0	0	0	15	0.6	10	0.4

Table 1. Employment situation

* HKU overall refers to the figure for the total HKU population and includes M.B.,B.S. and B.D.S. graduates.

Where did the 1998 B.Fin. graduates go ?

III. Further Studies

Compared with 1997, there were more graduates going on for further studies (10% vs. 5.7%). Three graduates pursued postgraduate studies in the same discipline as their first degree while three graduates took up a master (coursework) programme in social sciences. One graduate each studied urban planning/studies and education. Of these, 7 graduates were enrolled in local tertiary institutions and the other one went abroad to U.K.. Table 2 shows the academic programmes pursued & Table 3 shows the source of finance.

Fields of Study	Academic Programmes	
	Master (Coursework)	Postgraduate Certificate
Economic & Finance	3	
Social Sciences	3	
Urban Planning/Studies	1	
Education		1

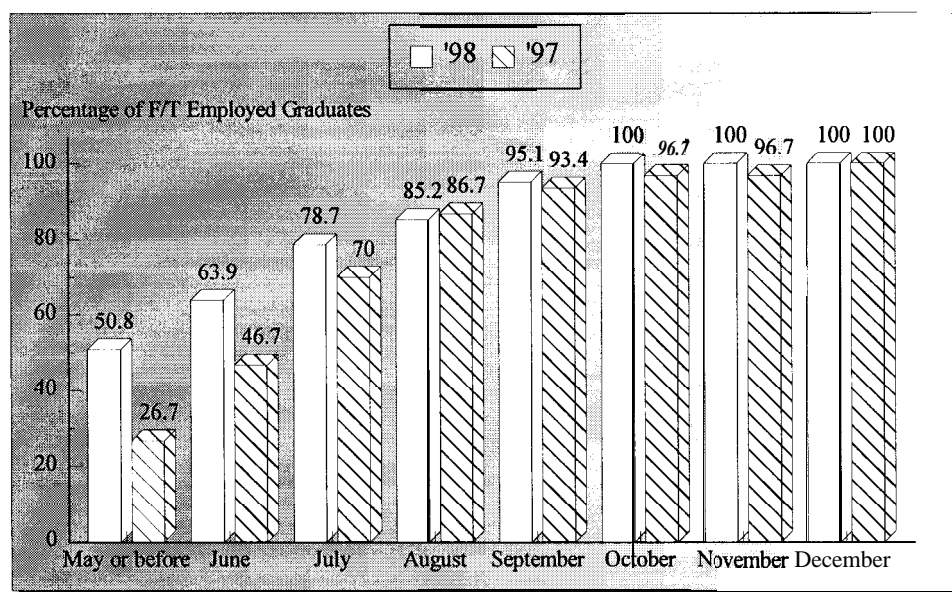
Table 2. Academic programme

Source of Finance	No. of Graduates
Own Funds	2
Teaching Assistantship/Studentship	1
Scholarship & Own Funds	1
Government Grant & Loan	4

Table 3. Source of finance for further studies

IV. Time Taken to Secure Employment

Among those graduates who were in full-time employment, 85% secured their first job offer before the end of August. The figure increased to 100% by the end of October. (Figure 1)



No Response = 1

Figure 1. Time taken to secure employment

Where did the 1998 B.Fin. graduates go ?

V. Employment Sectors

Most (84% or 52 graduates) of the B.Fin. graduates were employed in commerce & industry, followed by 9.7% (or 6 graduates) in the civil service and 4.8% (or 3 graduates) in education sector. Another 1.6% (or 1 graduates) joined the community, social & personal services. (Figures 2 & 3)

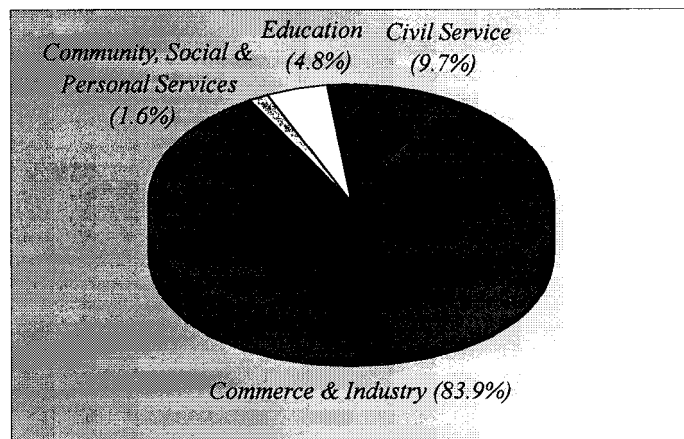


Figure 2. Employment sectors

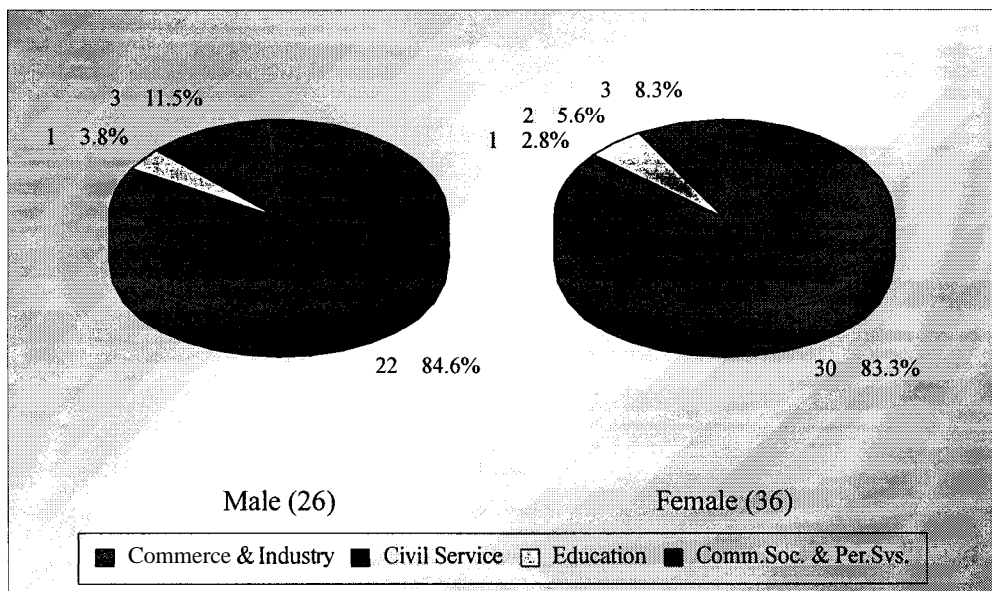


Figure 3. Employment sectors by sex

Where did the 1998 B.Fin. graduates go ?

VI. Basic Salary and Gross Income

The remuneration received by the B.Fin. graduates is shown in Table 4.

	<i>Basic Salary</i>				<i>Gross Income</i>			
	B.Fin.		HKU Average*		B.Fin.		HKU Average*	
	'98	'97	'98	'97	'98	'97	'98	'97
<i>Mean</i>	\$13,002	\$12,832	\$15,496	\$15,749	\$14,029	\$14,195	\$16,557	\$17,552
<i>Median</i>	\$12,300	\$11,850	\$12,300	\$12,500	\$13,325	\$13,000	\$13,325	\$14,521
<i>Minimum</i>	\$6,750	\$9,000	\$1,000	\$4,400	\$6,750	\$10,250	\$5,000	\$5,000
<i>Maximum</i>	\$35,285	\$30,610	\$58,000	\$59,000	\$35,285	\$30,610	\$59,000	\$74,000

Table 4. Basic salary and gross income

* HKU average refers to the figure for the total HKU population and includes M.B.,B.S. and B.D.S. graduates.

VII. Number of Full-Time Job Offers

Of those in full-time employment, 54% of the graduates had more than one job offer. 30% reported having received three to eight or more job offers. On average, each graduate received 2.2 job offers. (Figure 4)

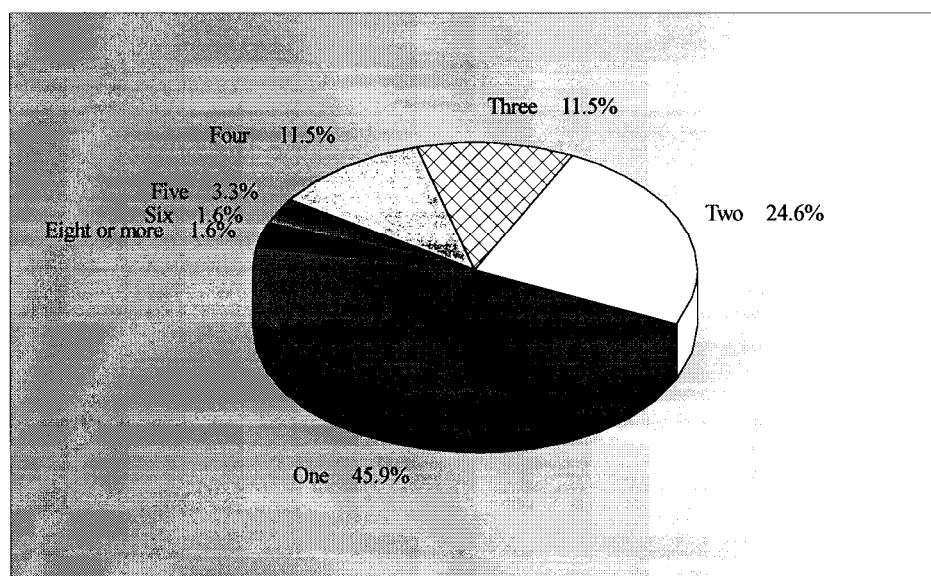


Figure 4. No. of full-time job offers

Where did the 1998 B. Fin. graduates go ?

VIII. Names of Employers and Job Titles

The job titles of the B.Fin. graduates in full-time employment and the names of their employers are listed below.

<u>Employers :</u>	<u>Job Titles :</u>
CIVIL SERVICE -	
• HKSAR - Customs & Excise Department	• Inspector
• HKSAR - Drainage Services Department	• Assistant Departmental Secretary
• HKSAR - Education Department	• Executive Officer
• HKSAR - Health & Welfare Bureau	• Assistant Secretary
• HKSAR - Management Service Agency	• Management Services Officer
• HKSAR - Trade & Industry Bureau	• Administrative Officer
EDUCATION -	
• The University of Hong Kong	• Executive Officer
• The University of Hong Kong	• Programme Assistant
• The University of Hong Kong	• Research Assistant
COMMUNITY, SOCIAL & PERSONAL SERVICES -	
• Hong Kong Tourist Association	• Information Officer
COMMERCE & INDUSTRY -	
• American Express Bank	• Customer Service Officer
• Andersen Consulting	• Analyst
• Arthur Andersen & Co	• Staff Accountant
• Arthur Andersen & Co	• Staff Accountant
• Australia & New Zealand Banking Group Ltd	• Corporate Banking Assistant
• Australia & New Zealand Banking Group Ltd	• Corporate Banking Assistant
• Bank of China	• Officer Trainee
• Bank of China	• Officer Trainee
• Campbell Soup Asia Ltd	• Administrative Assistant
• Chekiang First Bank Ltd	• Banking Trainee
• Dehua Material Testing Co Ltd	• Administrative Assistant
• Deloitte Touche Tohmatsu	• Staff Accountant
• Deloitte Touche Tohmatsu	• Staff Accountant
• Deloitte Touche Tohmatsu	• Staff Accountant
• Deloitte Touche Tohmatsu	• Staff Accountant
• Deloitte Touche Tohmatsu	• Staff Accountant
• Deloitte Touche Tohmatsu	• Staff Accountant
• Dairy Farm International Co Ltd	• Management Trainee
• Digital Power Studio	• Marketing Executive
• DST International (HK) Ltd	• Support Desk Consultant
• East Asia Aetna Insurance Group	• Clerk
• East Asia Heller Ltd	• Customer Credit Analyst
• Ernst & Young	• Staff Accountant
• Ernst & Young	• Staff Accountant

Where did the 1998 B. Fin. graduates go ?

• Fortune Chart Consultants Ltd	. Assistant Business Manager
• Gene Co Ltd	. Personal Secretary
• Giordano	. Trainee
• HK Resort Co Ltd	• Accounting Assistant
• Hon Hing Futures Ltd	. Account Executive
• Hongkong Sales (Knitwear) Ltd	. Accounting Assistant
• Howard Schultz & Associate	. Audit Trainee
• Jardine Insurance Brokers Ltd	. Account Executive Trainee
• Jardine Matheson Ltd	• Trainee Accountant
• Kingswood Property Services Ltd	• Executive Assistant
• KPMG Peat Marwick	. Tax Assistant
• KPMG Peat Mat-wick	. Assistant Auditor
• Manulife (International) Ltd	. Management Trainee
• Ming Pao Newspaper Ltd	. Financial Reporter
• Multiable Co	. System Support Executive
• Nan Yang Commercial Bank	. Officer Trainee
• New York Insurance Worldwide Ltd	. Marketing Executive
• PricewaterhouseCoopers	. Associate
• PricewaterhouseCoopers	. Associate
• PricewaterhouseCoopers	. Associate
• Sing Tao Daily	• Journalist
• Standard Chartered Bank	. Management Trainee
• Sunning Trading Co Ltd	. Marketing Officer
• The Prudential Assurance Co Ltd	. Insurance Consultant
• The Prudential Hotel	. Financial Analyst
• Union Bank of HK Ltd	• Credit Analyst
• Victorinox (HK) Ltd	• Sales Executive
• Worldtech Contracting (HK) Ltd	. Project Trainee
• Organization's name not reported	. Staff Accountant

Table 5. List of employers and job titles

Note : Some alumni have indicated willingness to talk to individual students about their work. Their contact telephone number can be obtained from counsellors at CEPC.

Where did the 1998 B. Fin. graduates go ?

- IX.** Similar information on graduates from other disciplines of study are available for reference in the Careers Library. Please enquire with the CEPC.

Careers Education and Placement Centre
3/F Wong Chuang Lai Wah Building
Meng Wah Complex
The University of Hong Kong
Pokfulam Road
Hong Kong

Telephone : 28592314
Fax : 25595238
E-Mail : CEPC@HKUCC.HKU.HK
Homepage : <http://www.hku.hk/cepc>

Opening Hours : Monday - Friday (9:00 a.m. to 5:30 p.m.)
Saturday (9:00 a.m. to 12:00 p.m.)

Cindy Chan

June, 1999

The analysis is based on information provided by the respondents, and the Careers Education & Placement Centre should not be held responsible for any errors arising therefrom.

No part of this report may be reproduced in any form or by whatever means,
without written permission from the Director of the Careers Education and Placement Centre,
The University of Hong Kong