

Where did the 1998 B.Eng. - Industrial Management & Manufacturing Systems Engineering graduates go ?

I. Introduction

The information contained in this paper is extracted from the Graduate Employment Survey of 1998 to answer the following questions about Industrial Management & Manufacturing Systems Engineering majors :-

- How were they employed six months after graduation ?
- Of those who pursued further studies, what programmes did they follow ?
- Of those who were employed full-time, how long did it take them to secure their first job offer ?
- In which sectors were they employed ?
- How much did they receive in salary ?
- How many job offers did they receive ?
- Who were their employers and what were their job titles ?

II. Employment Situation in 1998

Out of 62 Industrial Management & Manufacturing Systems Engineering graduates, 57 responded to our survey, representing a response rate of 92%. Of these, 77% (or 44 graduates) were in full-time employment within six months of graduation. 14% (or 8 graduates) went on for further studies. Another 8.8% (or 5 graduates) were still seeking full-time employment at the time of the survey. (Table 1)

	Industrial Management & Manufacturing Systems Engineering										HKU Overall*					
	Total				Male				Female							
	'98		'97		'98		'97		'98		'97					
	No.	%	No.	%	No.	%	No.	%	No.	%	No.	%	No.	%		
<i>No. of respondents</i>	57	100	73	100	43	100	65	100	14	100	8	100	2383	100	2272	100
<i>F/T employed</i>	44	77.2	64	87.7	35	81.4	57	87.7	9	64.3	7	87.5	1701	71.4	1829	80.5
<i>P/T employed seeking F/T job</i>	1	1.8	1	1.4	1	2.3	1	1.5	0	0	0	0	94	3.9	37	1.6
<i>Unemployed seeking F/T job</i>	4	7.0	3	4.1	3	7.0	3	4.6	1	7.1	0	0	157	6.6	53	2.3
<i>Further studies</i>	8	14.0	5	6.8	4	9.3	4	6.2	4	28.6	1	12.5	413	17.3	339	14.9
<i>Emigration/home country</i>	0	0	0	0	0	0	0	0	0	0	0	0	3	0.1	4	0.2
<i>Not seeking F/T job</i>	0	0	0	0	0	0	0	0	0	0	0	0	15	0.6	10	0.4

Table 1. Employment situation

* HKU overall refers to the figure for the total HKU population and includes M.B.,B.S. and B.D.S. graduates.

Where did the 1998 B.Eng. - Industrial Management & Manufacturing Systems Engineering graduates go ?

III. Further Studies

Compared with 1997, there were more graduates going on for further studies (14% vs. 6.8%). Seven graduates pursued postgraduate studies in the same discipline as their first degree while one graduate studied mechanical engineering. All of them were enrolled in local tertiary institutions. Table 2 shows the academic programme pursued & Table 3 shows the source of finance.

Fields of Study	Academic Programmes	
	M.Phil.	Master (Coursework)
Industrial Engineering	6	1
Mechanical Engineering	1	

Table 2. Academic programmes

Source of Finance	No. of Graduates
Teaching Assistantship/Studentship	7
Scholarship & Teaching Assistantship/Studentship	1

Table 3. Source of finance for further studies

IV. Time Taken to Secure Employment

Among those graduates who were in full-time employment, 93% secured their first job offer before the end of September. The figure increased to 100% by the end of December. (Figure 1)

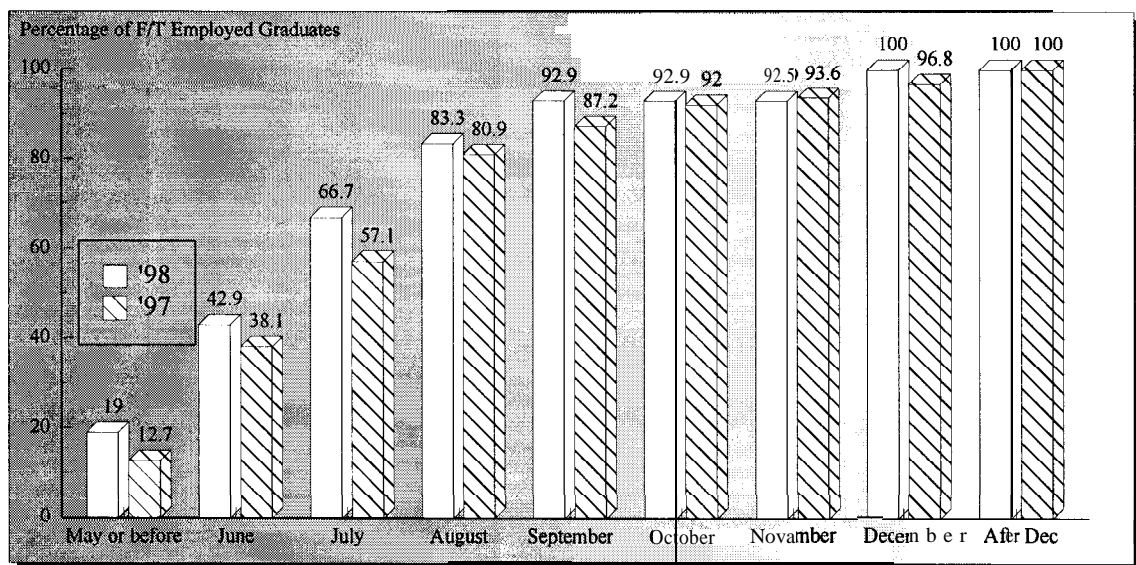


Figure 1. Time taken to secure employment

Where did the 1998 B.Eng. - Industrial Management & Manufacturing Systems Engineering graduates go ?

V. Employment Sectors

Most (91% or 40 graduates) of the Industrial & Manufacturing Systems Engineering graduates were employed in commerce & industry, followed by 6.8% (or 3 graduates) in education sector. Another 2.3% (or 1 graduate) joined the civil service. (Figures 2 & 3)

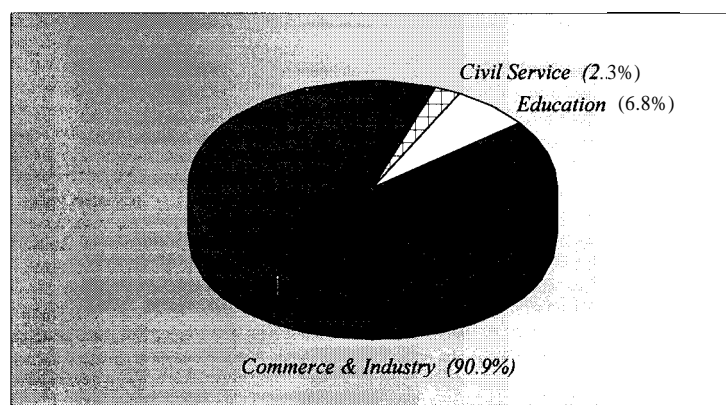


Figure 2. Employment sectors

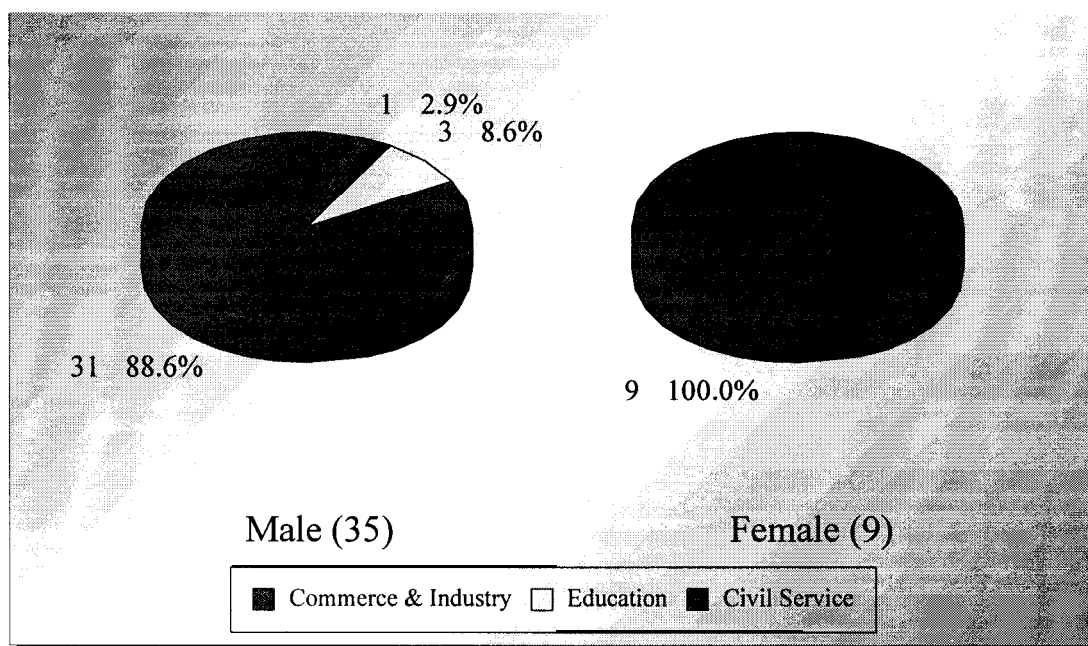


Figure 3. Employment sectors by sex

Where did the 1998 B.Eng. - Industrial Management & Manufacturing Systems Engineering graduates go ?

VI. Basic Salary and Gross Income

The remuneration received by the Industrial Management & Manufacturing Systems Engineering graduates is shown in Table 4.

	<i>Basic Salary</i>				<i>Gross Income</i>			
	Industrial Mangement & Manufacturing Systems		HKU Average*		Industrial Mangement & Manufacturing Systems		HKU Average*	
	'98	'97	'98	'97	'98	'97	'98	'97
Mean	\$11,724	\$11,501	\$15,496	\$15,749	\$13,089	\$12,962	\$16,557	\$17,552
Median	\$10,400	\$11,000	\$12,300	\$12,500	\$12,417	\$12,850	\$13,325	\$14,521
Minimum	\$7,000	\$8,000	\$1,000	\$4,400	\$7,000	\$8,667	\$5,000	\$5,000
Maximum	\$30,585	\$18,110	\$58,000	\$59,000	\$30,585	\$18,683	\$59,000	\$74,000

Table 4. Basic salary and gross income

* HKU average refers to the figure for the total HKU population and includes M.B.,B.S. and B.D.S. graduates.

VII. Number of Full-Time Job Offers

Of those in full-time employment, 66% of the graduates had more than one job offer. 32% reported having three to eight or more job offers. On average, each graduate received 2.4 job offers. (Figure 4)

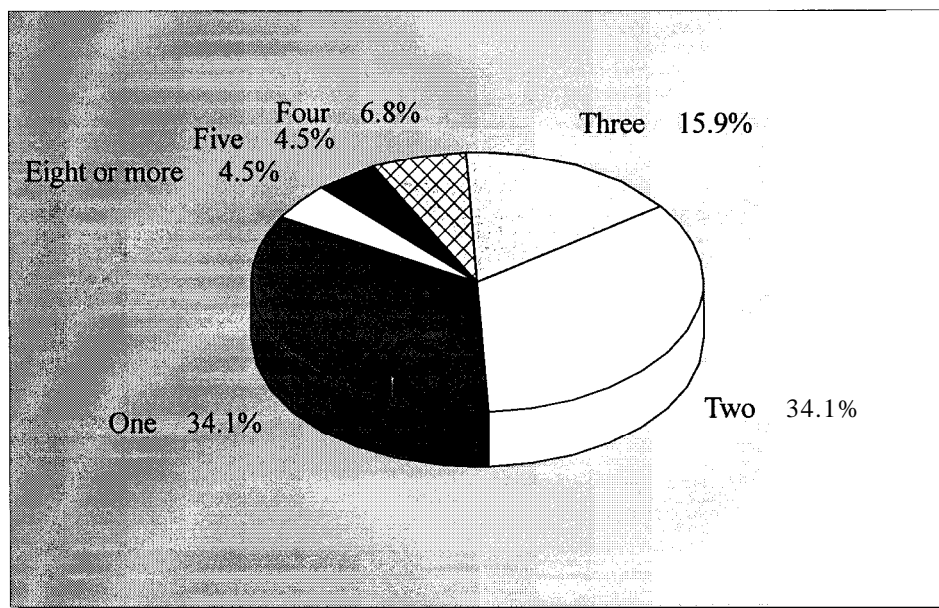


Figure 4. No. of full-time job offers

Where did the 1998 B.Eng. - Industrial Management & Manufacturing Systems Engineering graduates go ?

VIII. Names of employers and job titles

The job titles of the Industrial Management & Manufacturing Systems Engineering graduates in full-time employment and the names of their employers are listed below.

<u>Employers :</u>	<u>Job Titles :</u>
CIVIL SERVICE -	
• HKSAR - Customs & Excise Dept	• Inspector
EDUCATION -	
• NT Heung Yee Kuk Yuen Long District Secondary School	• Graduate Master
• Maria College	• Certificate Master
• Tung Wah Group Hospitals School	• Certificate Master
COMMERCE & INDUSTRY -	
• Avery Dennison Hong Kong B.U.	• Project Engineer
• Benchmarks Co Ltd	• Quality Assurance Engineer
• Brother Plastic & Metal Mfg Ltd	• Quality Assurance Engineer
• Cafe de Coral Holdings Ltd	• Industrial Engineer
• Cathay Pacific Airways Ltd	• Engineering Trainee
• Chen Hong Co Ltd	• Engineering Trainee
• Evenflo (Philippine) Inc	• Assistant Engineer
• Expeditors	• Operation Assistant
• Fair Future Industrial Ltd	• Engineer
• Harbour Ring International Holdings Ltd	• Programmer
• Hong Kong & China Gas Co Ltd	• Graduate Trainee
• Innovative Technologies Ltd	• Process Engineer
• Intertek Testing Services	• Assistant System Compliance Auditor
• Johnson Electric Co Ltd	• Engineer
• Johnson Electric Manufacturing Ltd	• Industrial Engineer
• Karrie Industrial Co Ltd	• Quality Assurance Engineer
• Kodak (Far East) Ltd	• Customer Relations Assistant
• Lew Scientific Trading Co Ltd	• Sales Engineer
• New Bright Industrial Co Ltd	• Assistant to Factory Manager
• New Bright Industrial Co Ltd	• Assistant to Factory Manager
• Parasilk International Ltd	• Clerk
• Prudential Assurance Co Ltd	• Insurance Consultant
• Q P L Ltd	• Engineer
• Q P L Ltd	• Quality Assurance Engineer
• Redland Concrete Co Ltd	• Management Trainee
• SAP	• Consultant
• Sealand Oriental Ltd	• Graduate Officer
• Sonia Products Ltd	• Engineer Trainee
• Specialized Resources Ltd	• Assistant Project Engineer
• Sun Life of Canada Insurance Co	• Management Trainee
• Swank International Optical Co Ltd	• Customer Service Engineer
• TDK Manufacturing HK	• Production Planning Supervisor

Where did the 1998 B.Eng. - Industrial Management & Manufacturing Systems Engineering graduates go ?

<ul style="list-style-type: none"> • Tontec Industrial Co • Unigraphics Solutions • Varitronix Ltd • V-tech Co Ltd • Yat Fat New Tech Ltd • Yue Po Engineering Co Ltd • Organization's name not reported 	<ul style="list-style-type: none"> • Customer Services Officer • Technical & Marketing Analyst • Production Engineer • Mechanical Engineer • Technical Support Engineer • Sales Executive • Customer Service Engineer
---	--

No Response = I

Table 5. List of employers and job titles

Note : Some alumni have indicated willingness to talk to individual students about their work. Their contact telephone number can be obtained from **counsellors** at CEPC.

IX. Similar information on graduates from other disciplines of study are available for reference in the Careers Library. Please enquire with the CEPC.

Careers Education and Placement Centre
3/F Wong Chuang Lai Wah Building
Meng Wah Complex
The University of Hong Kong
Pokfulam Road
Hong Kong

Telephone : 28592314
Fax : 2559 5238
E-Mail : CEPC@HKUCC.HKU.HK
Homepage : <http://www.hku.hk/cepc>

Opening Hours : Monday - Friday (9:00 a.m. to 5:30 p.m.)
Saturday (9:00 a.m. to 12:00 p.m.)

Cindy Chan

June, 1999

The analysis is based on information provided by the respondents, and the Careers Education & Placement Centre should not be held responsible for any errors arising therefrom.

No part of this report may be reproduced in any form or by whatever means,
without written permission from the Director of the Careers Education and Placement Centre,
The University of Hong Kong