

Where did the 1998 B.Eng. - Electrical Energy Systems Engineering graduates go ?

I. Introduction

The information contained in this paper is extracted from the Graduate Employment Survey of 1998 to answer the following questions about Electrical Energy Systems Engineering majors : -

- How were they employed six months after graduation ?
- Of those who pursued further studies, what programmes did they follow ?
- Of those who were employed full-time, how long did it take them to secure their first job offer ?
- In which sectors were they employed ?
- How much did they receive in salary ?
- How many job offers did they receive ?
- Who were their employers and what were their job titles ?

II. Employment Situation in 1998

Out of 20 Electrical Energy Systems Engineering graduates, 19 responded to our survey, representing a response rate of 95%. Of these, 74% (or 14 graduates) were in full-time employment within six months of graduation. 16% (or 3 graduates) went on for further studies. Another 11% (or 2 graduates) were still seeking full-time employment at the time of the survey. (Table 1)

	Electrical Energy Systems Engineering										HKU Overall*					
	Total				Male				Female		'98		'97			
	'98		'97		'98		'97		'98						'97	
	No.	%	No.	%	No.	%	No.	%	No.	%	No.	%	No.	%		
<i>No. of respondents</i>	19	100	13	100	17	100	12	100	2	100	1	100	2383	100	2272	100
<i>F/T employed</i>	14	73.7	9	69.2	14	82.4	9	75.0	0	0	0	0	1701	71.4	1829	80.5
<i>P/T employed seeking F/T job</i>	0	0	0	0	0	0	0	0	0	0	0	0	94	3.9	37	1.6
<i>Unemployed seeking F/T job</i>	2	10.5	0	0	1	5.9	0	0	1	50.0	0	0	157	6.6	53	2.3
<i>Further studies</i>	3	15.8	4	30.8	2	11.8	3	25.0	1	50.0	1	100	413	17.3	339	14.9
<i>Emigration/home country</i>	0	0	0	0	0	0	0	0	0	0	0	0	3	0.1	4	0.2
<i>Not seeking F/T job</i>	0	0	0	0	0	0	0	0	0	0	0	0	15	0.6	10	0.4

Table 1. Employment situation

* HKU overall refers to the figure for the total HKU population and includes M.B.,B.S. and B.D.S. graduates.

Where did the 1998 B.Eng. - Electrical Energy Systems Engineering graduates go ?

III. Further Studies

Two graduates pursued postgraduate studies in the same discipline as their first degree while one graduate studied arts. Of these, one graduate was enrolled in a local tertiary institution and the others went abroad to U.S.A. and Japan. Table 2 shows the academic programmes pursued & Table 3 shows the source of finance.

Fields of Study	Academic programmes		
	M. Phil.	Master (Coursework)	Adv. Diploma/Diploma
Electrical/Electronic Engineering	1	1	
Arts			1

Table 2. Academic programmes

Source of Finance	No. of Graduates
Own Funds	1
Teaching Assistantship/Studentship	1
Scholarship & Own Funds	1

Table 3. Source of finance for further studies

IV. Time Taken to Secure Employment

Among those graduates who were in full-time employment, 93% were able to secure their first job offer before the end of September. The figure increased to 100% by the end of October. (Figure 1)

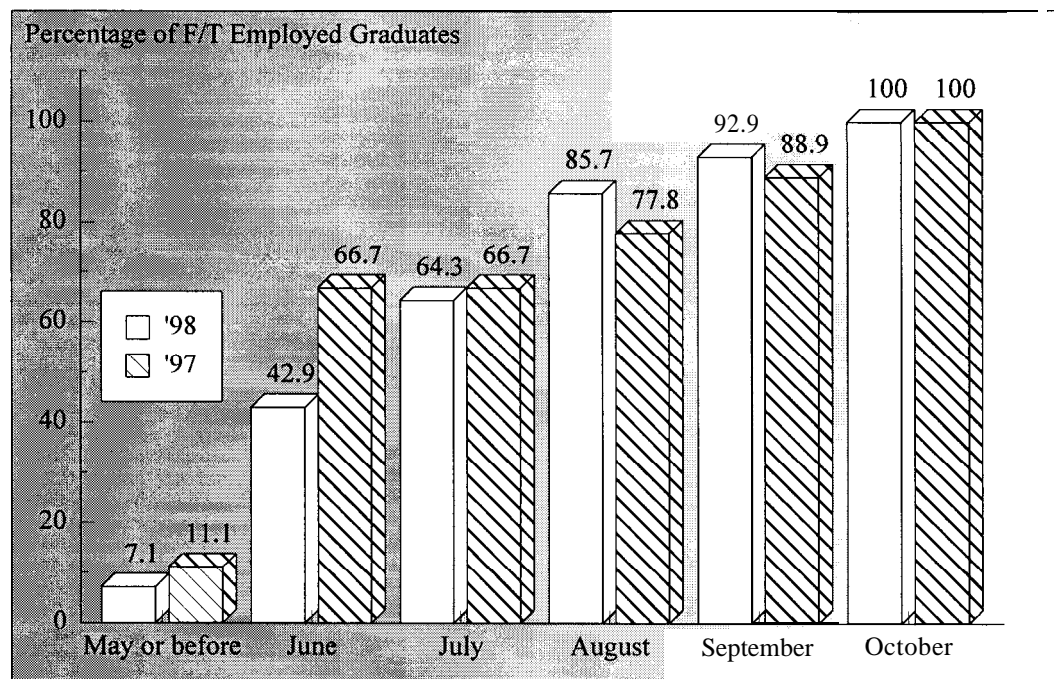


Figure 1. Time taken to secure employment

Where did the 1998 B.Eng. - Electrical Energy Systems Engineering graduates go ?

V. Employment Sectors

Most (93% or 13 graduates) of the Electrical Energy Systems Engineering graduates were employed in commerce & industry. The remaining 7.1% (or 1 graduate) joined the education sector. (Figure 2)

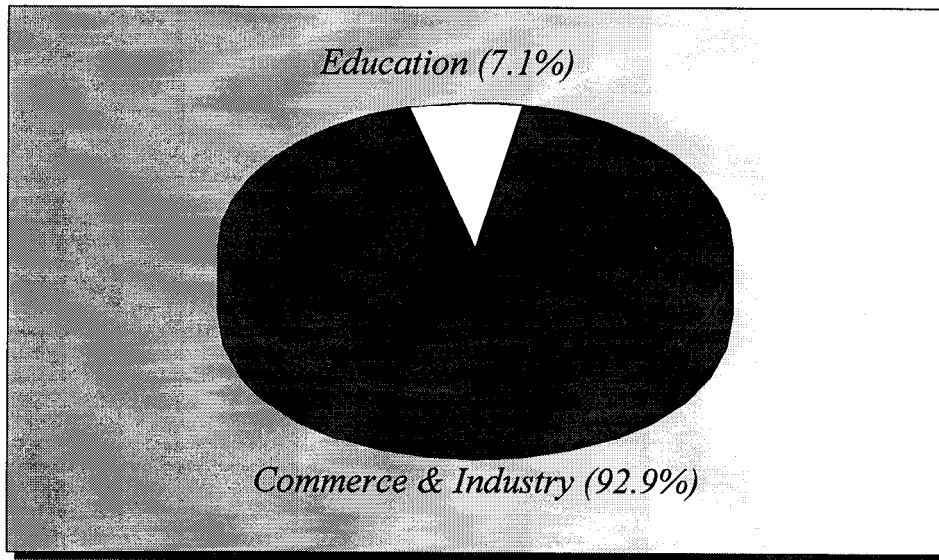


Figure 2. Employment sectors

VI. Basic Salary and Gross Income

The remuneration received by the Electrical Energy Systems Engineering graduates is shown in Table 4.

	<i>Basic Salary</i>				<i>Gross Income</i>			
	Electrical Energy Systems Engineering		HKU Average*		Electrical Energy Systems Engineering		HKU Average*	
	'98	'97	'98	'97	'98	'97	'98	'97
<i>Mean</i>	\$12,844	\$13,769	\$15,496	\$15,749	\$14,368	\$15,041	\$16,557	\$17,552
<i>Median</i>	\$11,500	\$14,080	\$12,300	\$12,500	\$14,583	\$15,253	\$13,325	\$14,521
<i>Minimum</i>	\$9,600	\$10,000	\$1,000	\$4,400	\$10,833	\$10,833	\$5,000	\$5,000
<i>Maximum</i>	\$17,192	\$16,830	\$58,000	\$59,000	\$19,170	\$18,233	\$59,000	\$74,000

Table 4. Basic salary and gross income

* HKU average refers to the figure for the total HKU population and includes M.B.,B.S. and B.D.S. graduates.

Where did the 1998 B.Eng. - Electrical Energy Systems Engineering graduates go ?

VII. Number of Full-Time Job Offers

Of those in full-time employment, 57% of the graduates had more than one job offer. 21% reported having received three to four job offers. On average, each graduate received 1.9 job offers. (Figure 3)

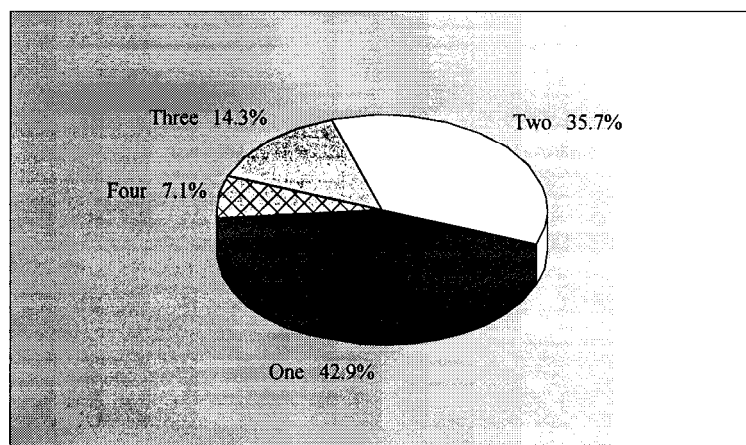


Figure 3. No. of full-time job offers

VIII. Names of employers and Job titles

The job titles of the Electrical Energy Systems Engineering graduates in full-time employment and the names of their employers are listed below.

<u>Employers :</u>	<u>Job Titles :</u>
COMMERCE & INDUSTRY -	
• China Light & Power Co Ltd	• Graduate Trainee
• China Light & Power Co Ltd	• Graduate Trainee
• Hyder Consulting Ltd	• Graduate Engineer
• Hyder Consulting Ltd	• Graduate Engineer
• J Roger Preston Ltd	• Engineering Trainee
• K M Luk & Engineers Co Ltd	• Graduate Engineer
• Ove Arup & Partner (HK) Ltd	• Graduate Engineer
• Parsons Brinckerhoff (Asia) Ltd	• Assistant Engineer
• Ryoden (Holdings) Ltd	• Assistant Engineer
• Ryoden Lift & Escalator Co Ltd	• Assistant Engineer
• Shun Hing Power & Transmission Equipment Co Ltd	• Customer Service Engineer
• UL International Ltd	• Engineer
• Winbond Electron HK Ltd	• Sales Engineer

No Response = 1

Table 5. List of employers and job titles

Note : Some alumni have indicated willingness to talk to individual students about their work. Their contact telephone number can be obtained from counsellors at CEPC.

Where did the 1998 B.Eng. - Electrical Energy Systems Engineering graduates go ?

- IX.** Similar information on graduates from other disciplines of study are available for reference in the Careers Library. Please enquire with the CEPC.

Careers Education and Placement Centre
3/F Wong Chuang Lai Wah Building
Meng Wah Complex
The University of Hong Kong
Pokfulam Road
Hong Kong

Telephone : 28592314
Fax : 2559 5238
E-Mail : CEPC@HKUCC.HKU.HK
Homepage : <http://www.hku.hk./cepc>

Opening Hours : Monday - Friday (9:00 a.m. to 5:30 p.m.)
Saturday (9:00 a.m. to 12:00 p.m.)

Cindy Chan

May, 1999

The analysis is based on information provided by the respondents, and the Careers Education & Placement Centre should not be held responsible for any errors arising therefrom.

No part of this report may be reproduced in any form or by whatever means,
without written permission from the Director of the Careers Education and Placement Centre,
The University of Hong Kong