

Where did the 1998 B.Eng. - Electrical & Electronic Engineering graduates go ?

I. Introduction

The information contained in this paper is extracted from the Graduate Employment Survey of 1998 to answer the following questions about Electrical & Electronic Engineering majors : -

- How were they employed six months after graduation ?
- Of those who pursued further studies, what programmes did they follow ?
- Of those who were employed full-time, how long did it take them to secure their first job offer ?
- In which sectors were they employed ?
- How much did they receive in salary ?
- How many job offers did they receive ?
- Who were their employers and what were their job titles ?

II. Employment Situation in 1998

Out of 96 Electrical & Electronic Engineering graduates, 89 responded to our survey, representing a response rate of 93%. Of these, 76% (or 68 graduates) were in full-time employment within six months of graduation. 17% (or 15 graduates) went on for further studies. Another 6.7% (or 6 graduates) were still seeking full-time employment at the time of the survey. (Table 1)

	Electrical & Electronic Engineering								HKU Overall*							
	Total				Male				Female							
	'98		'97		'98		'97		'98		'97					
	No.	%	No.	%	No.	%	No.	%	No.	%	No.	%				
<i>No. of respondents</i>	89	100	87	100	81	100	79	100	8	100	8	100	2383	100	2272	100
<i>F/T employed</i>	68	76.4	76	87.4	60	74.1	68	86.0	8	100	8	100	1701	71.4	1829	80.5
<i>P/T employed seeking F/T job</i>	0	0	0	0	0	0	0	0	0	0	0	0	94	3.9	37	1.6
<i>Unemployed seeking F/T job</i>	6	6.7	1	1.1	6	7.4	1	1.3	0	0	0	0	157	6.6	53	2.3
<i>Further studies</i>	15	16.9	10	11.5	15	18.5	10	12.7	0	0	0	0	413	17.3	339	14.9
<i>Emigration/home country</i>	0	0	0	0	0	0	0	0	0	0	0	0	3	0.1	4	0.2
<i>Not seeking F/T job</i>	0	0	0	0	0	0	0	0	0	0	0	0	15	0.6	10	0.4

Table 1. Employment situation

* HKU overall refers to the figure for the total HKU population and includes M.B.,B.S. and B.D.S. graduates.

Where did the 1998 B.Eng. - Electrical & Electronic Engineering graduates go ?

III. Further Studies

Thirteen graduates pursued postgraduate studies in the same discipline as their first degree while two graduates studied science. Of these, fourteen graduates were enrolled in local tertiary institutions and the other one went to Singapore. Table 2 shows the academic programmes pursued & Table 3 shows the source of finance.

Fields of Study	Academic Programmes	
	M.Phil.	Master (Coursework)
Electrical & Electronic Engineering	10	3
Science	2	

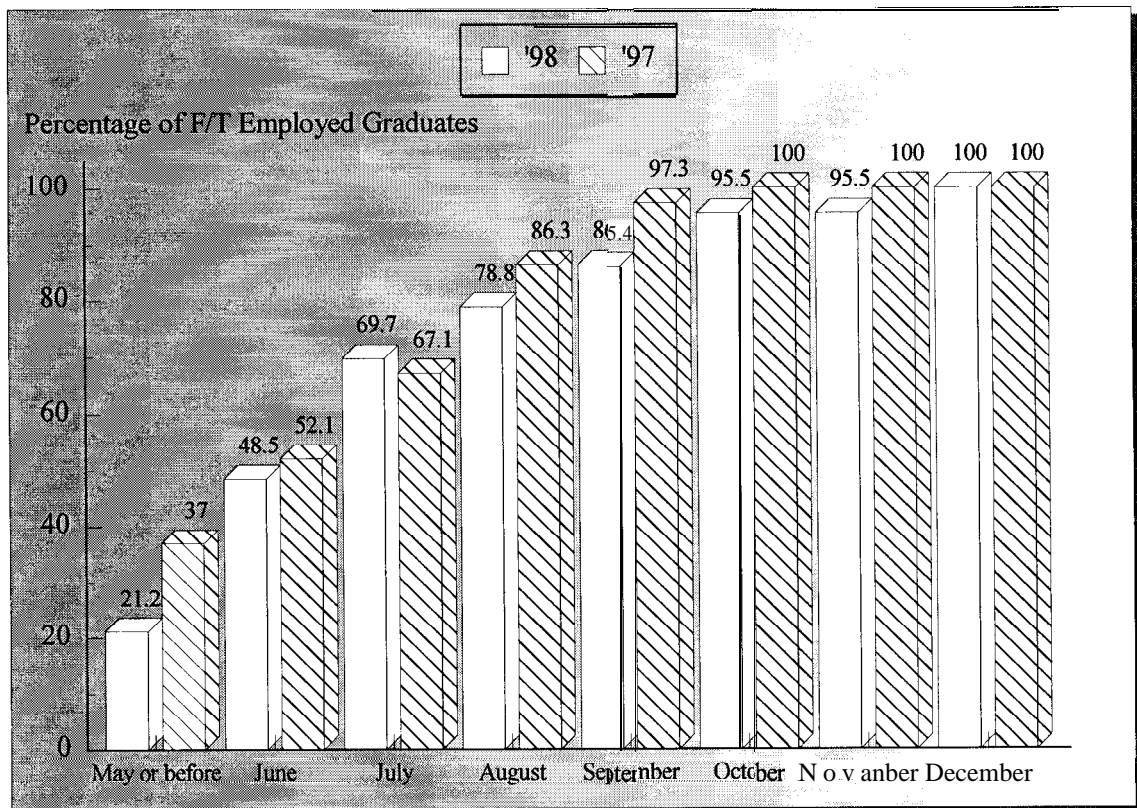
Table 2. Academic programmes

Source of Finance	No. of Graduates
Own Funds	4
Teaching Assistantship/Studentship	11

Table 3. Source of finance for further studies

IV. Time Taken to Secure Employment

Among those graduates who were in full-time employment, 86% secured their first job offer before the end of September. The figure increased to 100% by the end of December. (Figure 1)



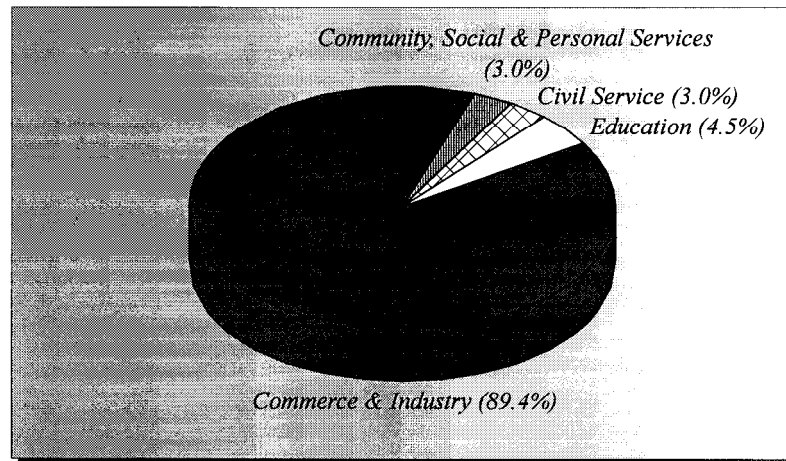
No Response = 2

Figure 1. Time taken to secure employment

Where did the 1998 B.Eng. - Electrical & Electronic Engineering graduates go ?

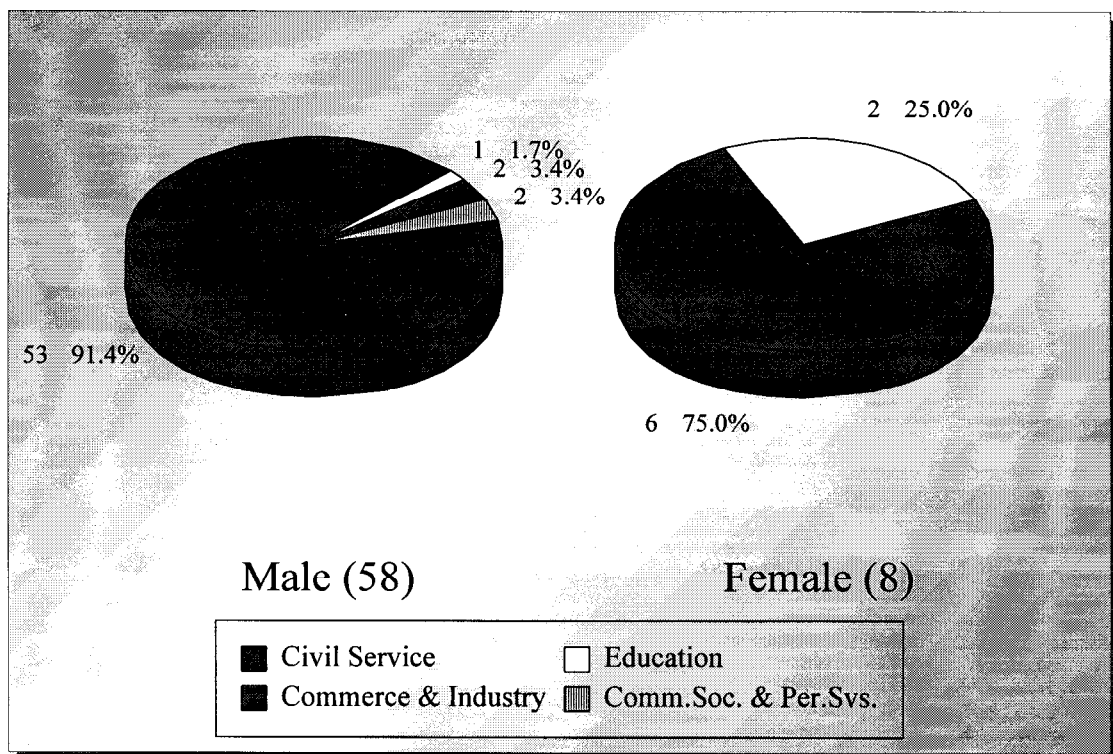
V. Employment Sectors

Most (89% or 59 graduates) of the Electrical & Electronic Engineering graduates were employed in commerce & industry, followed by 4.5% (or 3 graduates) in the education sector. Another 3% (or 2 graduates) each joined the civil service and community, social & personal services. (Figures 2 & 3)



No Response = 2

Figure 2. Employment sectors



No Response = 2

Figure 3. Employment sectors by sex

Where did the 1998 B.Eng. - Electrical & Electronic Engineering graduates go ?

VI. Basic Salary and Gross Income

The remuneration received by the Electrical & Electronic Engineering graduates is shown in Table 4.

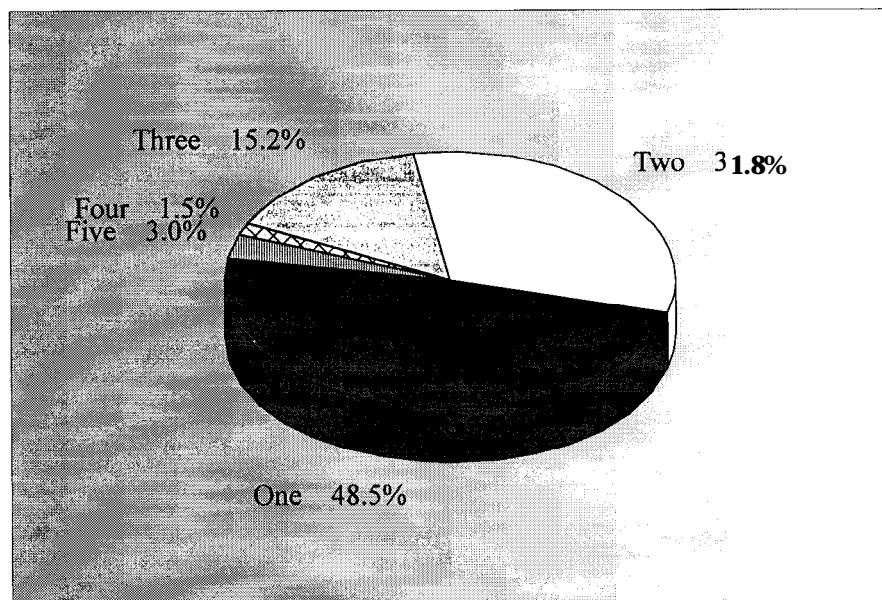
	<i>Basic Salary</i>				<i>Gross Income</i>			
	Electrical & Electronic Engineering		HKU Average*		Electrical & Electronic Engineering		HKU Average*	
	'98	'97	'98	'97	'98	'97	'98	'97
<i>Mean</i>	\$12,756	\$13,017	\$15,496	\$15,749	\$13,950	\$15,594	\$16,557	\$17,552
<i>Median</i>	\$12,500	\$12,000	\$12,300	\$12,500	\$14,000	\$15,042	\$13,325	\$14,521
<i>Minimum</i>	\$6,000	\$6,000	\$1,000	\$4,400	\$7,583	\$10,000	\$5,000	\$5,000
<i>Maximum</i>	\$22,000	\$20,865	\$58,000	\$59,000	\$22,000	\$64,250	\$59,000	\$74,000

Table 4. Basic salary and gross income

* HKU average refers to the figure for the total HKU population and includes M.B.,B.S. and B.D.S. graduates.

VII. Number of Full-Time Job Offers

Of those in full-time employment, 52% of the graduates had more than one job offer. 20% reported having received three to five job offers. On average, each graduate received 1.8 job offers. (Figure 4)



No Response = 2

Figure 4. No. of full-time job offers

Where did the 1998 B.Eng. - Electrical & Electronic Engineering graduates go ?

VIII. Names of employers and job titles

The job titles of the Electrical & Electronic Engineering graduates in full-time employment and the names of their employers are listed below.

<u>Employers :</u>	<u>Job Titles :</u>
CIVIL SERVICE -	
<ul style="list-style-type: none">• HKSAR - Education Department• HKSAR - Electrical & Mechanical Services Department	<ul style="list-style-type: none">• Assistant Education Officer• Electrical Engineering Graduate
EDUCATION -	
<ul style="list-style-type: none">• Authorized Academic Java Campus• The University of Hong Kong• The University of Hong Kong	<ul style="list-style-type: none">• Information Technology Engineer• Industrial Trainee Fellow• Industrial Trainee Fellow
COMMUNITY, SOCIAL & PERSONAL SERVICES -	
<ul style="list-style-type: none">• Hong Kong Productivity Council• Hong Kong Trade Development Council	<ul style="list-style-type: none">• Associate Consultant• Executive Trainee
COMMERCE & INDUSTRY -	
<ul style="list-style-type: none">• Andersen Consulting• Andersen Consulting• Auco Asia, Ltd• Bank of China Group EDP Center• Cathy Pacific Airways Ltd• China Light & Power Co Ltd• China Light & Power Co Ltd• Excel Time Ltd• Fujitsu (HK) Ltd• General Electric International Inc• Gold Mind Telecom• GPE International Ltd• Hewlett-Packard (HK) Ltd• Honest Fine Ltd• Hong Kong Telecom• Hong Kong Telecom• HongkongBank• HongkongBank• HongkongBank• HongkongBank• HongkongBank• HongkongBank• HongkongBank• HongkongBank• Hutchison Telecom (HK) Ltd	<ul style="list-style-type: none">• Analyst• Analyst• Software Engineer• Programmer• Engineering Trainee• Graduate Trainee• Graduate Trainee• LCD Watch Engineer• Software Development Engineer• Project Leader• Assistant Project Engineer• Assistant Electronic Engineer• Customer Engineer• Electronic Engineer• Technical Officer• Trainee Engineer• System Analyst/Programmer• System Analyst/Programmer• System Analyst/Programmer• System Analyst/Programmer• System Analyst/Programmer• System Analyst/Programmer• System Analyst/Programmer• System Analyst/Programmer• System Analyst/Programmer• Engineer Trainee

Where did the 1998 B.Eng. - Electrical & Electronic Engineering graduates go ?

▶ Hutchison Telecom (HK) Ltd	● Engineer Trainee
▶ Land Development Corporation	● Assistant Land Surveyor
▶ Logistic Industrial Supplies Ltd	● Sales Engineer
▶ Lukin Research Co Ltd	● Electronic Engineer
▶ Lukin Research Co Ltd	● Electronic Engineer
▶ Mantroshine Co Ltd	● Technical, Sales & Service Engineer
▶ Motorola Semiconductors HK Ltd	● Application Engineer
▶ MTRC	● Graduate Engineer
▶ MTRC	● Graduate Engineer
▶ Newton Power Ltd	● Electronic Engineer
▶ Nike (HK) Ltd	● Technical Presentation Officer
▶ Ove Arup & Partners (HK) Ltd	● Graduate Engineer
▶ Ove Arup & Partners (HK) Ltd	● Graduate Engineer
▶ PC Home	● Sub-Editor
▶ Perpetual Advance Mirco-Electronic Ltd	● Application & Service Engineer
▶ Philips - LCD Factory	● Vendor Quality Engineer
▶ PK Electronics Co Ltd	● Service Engineer
▶ PK Electronics Co Ltd	● Service Engineer
▶ Score Concept Semiconductor Ltd	● Electronic Engineer
▶ Shinco Technology (HK) Ltd	● Engineer
▶ Shinco Technology (HK) Ltd	● Engineer
▶ Shun Hing Engineering Contracting Co Ltd	● Engineer Trainee
▶ Signal Communication Ltd	● Engineer
▶ STD Holding Ltd	● Assistant Electronics Engineer
▶ Swire Property Ltd	● Engineering Management Trainee
▶ The Commercial Press (HK) Ltd	● Multi-Media Programmer
▶ The Hongkong Electric Co Ltd	● Graduate Trainee
▶ Tokin Electronics (HK) Ltd	● Marketing Executive
▶ Top Resources Co Ltd	● Marketing Executive
▶ Yue PO Engineering Co Ltd	● Sales Executive
● Organization name not reported	● Analyst Programmer
● Organization name not reported	● Computer Engineers
● Organization name not reported	● Programmer

No Response = 3

Table 5. List of employers and job titles

Note : Some alumni have indicated willingness to talk to individual students about their work. Their contact telephone number can be obtained from counsellors at CEPC.

Where did the 1998 B.Eng. - Electrical & Electronic Engineering graduates go ?

- IX.** Similar information on graduates from other disciplines of study are available for reference in the Careers Library. Please enquire with the CEPC.

Careers Education and Placement Centre
3/F Wong Chuang Lai Wah Building
Meng Wah Complex
The University of Hong Kong
Pokfulam Road
Hong Kong

Telephone : 28592314
Fax : 2559 5238
E-Mail : CEPC@HKUCC.HKU.HK
Homepage : <http://www.hku.hk/cepc>

Opening Hours : Monday - Friday (9:00 a.m. to 5:30 p.m.)
Saturday (9:00 a.m. to 12:00 p.m.)

Cindy Chan

June. 1999

The analysis is based on information provided by the respondents, and the Careers Education & Placement Centre should not be held responsible for any errors arising therefrom.

No part of this report may be reproduced in any form or by whatever means,
without written permission from the Director of the Careers Education and Placement Centre,
The University of Hong Kong