

Where did the 1998 B.Eng. - Civil & Structural Engineering graduates go ?

I. Introduction

The information contained in this paper is extracted from the Graduate Employment Survey of 1998 to answer the following questions about Civil & Structural Engineering majors : -

- . How were they employed six months after graduation ?
- . Of those who pursued further studies, what programmes did they follow ?
- . Of those who were employed full-time, how long did it take them to secure their first job offer ?
- . In which sectors were they employed ?
- . How much did they receive in salary ?
- . How many job offers did they receive ?
- Who were their employers and what were their job titles ?

II. Employment Situation in 1998

Out of 101 Civil & Structural Engineering graduates, 92 responded to our survey, representing a response rate of 91%. Of these, 90% (or 83 graduates) were in full-time employment within six months of graduation. 6.5% (or 6 graduates) went on for further studies. Another 3.3% (or 3 graduates) were still seeking for full-time employment at the time of the survey. (Table 1)

	Civil & Structural Engineering								HKU Overall*							
	Total				Male				Female							
	'98		'97		'98		'97		'98		'97					
	No.	%	No.	%	No.	%	No.	%	No.	%	No.	%				
<i>No. of respondents</i>	92	100	86	100	83	100	71	100	9	100	15	100	2383	100	2272	100
<i>F/T employed</i>	83	90.2	82	95.3	74	89.2	67	94.4	9	100	15	100	1701	71.4	1829	80.5
<i>P/T employed seeking F/T job</i>	0	0	0	0	0	0	0	0	0	0	0	0	94	3.9	37	1.6
<i>Unemployed seeking F/T job</i>	3	3.3	0	0	3	3.6	0	0	0	0	0	0	157	6.6	53	2.3
<i>Further studies</i>	6	6.5	3	3.5	6	7.2	3	4.2	0	0	0	0	413	17.3	339	14.9
<i>Emigration/home country</i>	0	0	0	0	0	0	0	0	0	0	0	0	3	0.1	4	0.2
<i>Not seeking F/T job</i>	0	0	1	1.2	0	0	1	1.4	0	0	0	0	15	0.6	10	0.4

Table 1. Employment situation

* HKU overall refers to the figure for the total HKU population and includes M.B.,B.S. and B.D.S. graduates.

Where did the 1998 B.Eng. - Civil & Structural Engineering graduates go ?

III. Further Studies

Six graduates pursued postgraduate studies in the same discipline as their first degree. Of these, two graduates were enrolled in local tertiary institutions and two graduates each went abroad to U.K. and U.S.A.. Table 2 shows the academic programmes pursued & Table 3 shows the source of finance.

Field of Study	Academic Programmes	
	M. Phil	Master (Coursework)
Civil & Structural Engineering	2	4

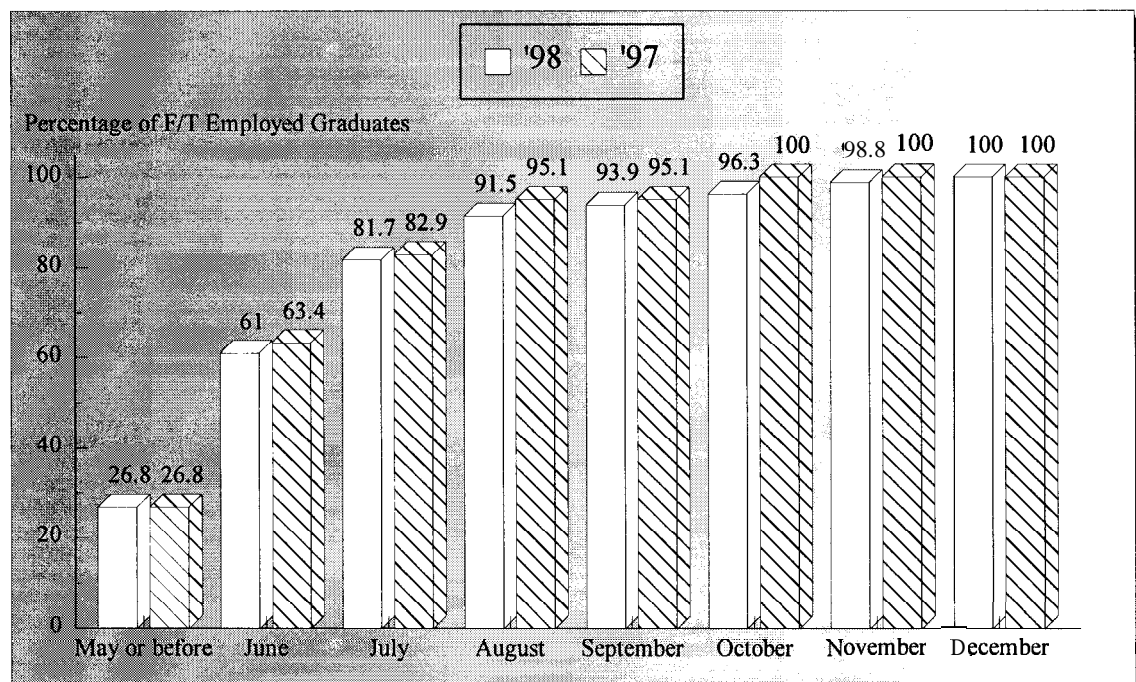
Table 2. Academic programmes

Source of Finance	No. of Graduates
Own Funds	4
Teaching Assistantship/Studentship	2

Table 3. Source of finance for further studies

IV. Time Taken to Secure Employment

Among those graduates who were in full-time employment, 94% secured their first job offer before the end of September. The figure increased to 100% by the end of December. (Figure 1)



No Response = 1

Figure 1. Time taken to secure employment

Where did the 1998 B.Eng. - Civil & Structural Engineering graduates go ?

V. Employment Sectors

72% (or 60 graduates) of the Civil & Structural Engineering graduates were employed in commerce & industry. The remaining 28% (or 23 graduates) joined the civil service. (Figures 2 & 3)

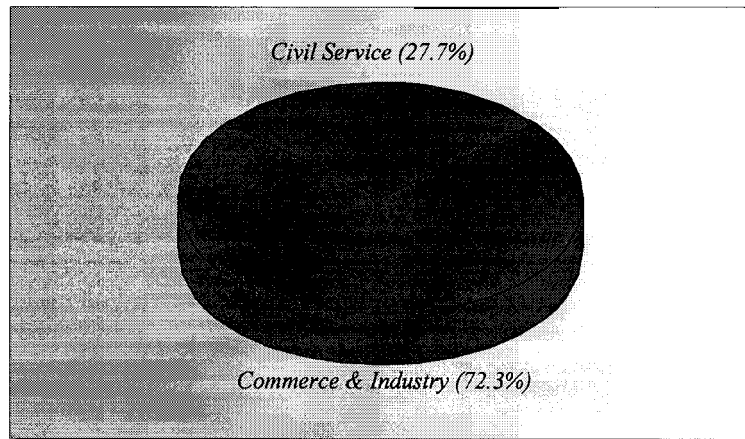


Figure 2. Employment sectors

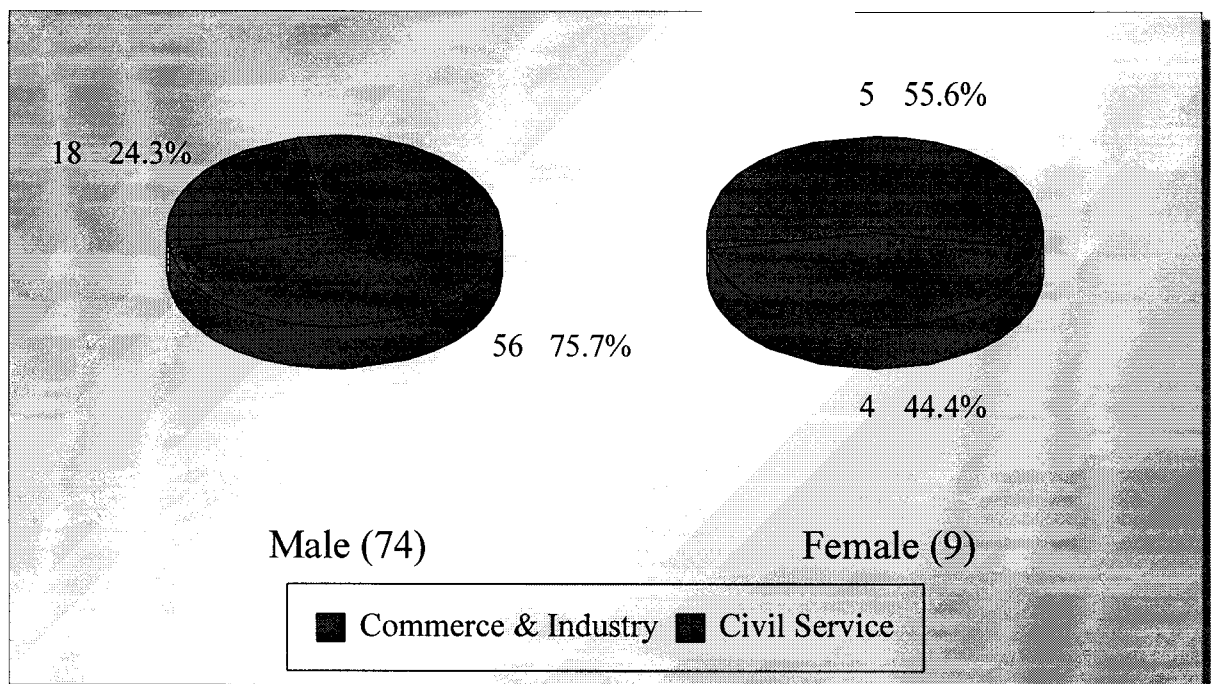


Figure 3. Employment sectors by sex

Where did the 1998 B.Eng. - Civil & Structural Engineering graduates go ?

VI. Basic Salary and Gross Income

The remuneration received by the Civil & Structural Engineering graduates is shown in Table 4.

	<i>Basic Salary</i>				<i>Gross Income</i>			
	Civil & Structural Engineering		HKU Average*		Civil & Structural Engineering		HKU Average*	
	'98	'97	'98	'97	'98	'97	'98	'97
<i>Mean</i>	\$15,130	\$15,066	\$15,496	\$15,749	\$16,135	\$15,871	\$16,557	\$17,552
<i>Median</i>	\$15,500	\$14,738	\$12,300	\$12,500	\$16,792	\$16,069	\$13,325	\$14,521
<i>Minimum</i>	\$8,000	\$11,500	\$1,000	\$4,400	\$8,667	\$12,458	\$5,000	\$5,000
<i>Maximum</i>	\$17,460	\$20,865	\$58,000	\$59,000	\$25,975	\$20,865	\$59,000	\$74,000

Table 4. Basic salary and gross income

* HKU average refers to the figure for the total HKU population and includes M.B.,B.S. and B.D.S. graduates.

VII. Number of Full-Time Job Offers

Of those in full-time employment, 69% of the graduates had more than one job offer. 40% reported having received three to eight or more job offers. On average, each graduates received 2.5 job offers. (Figure 4)

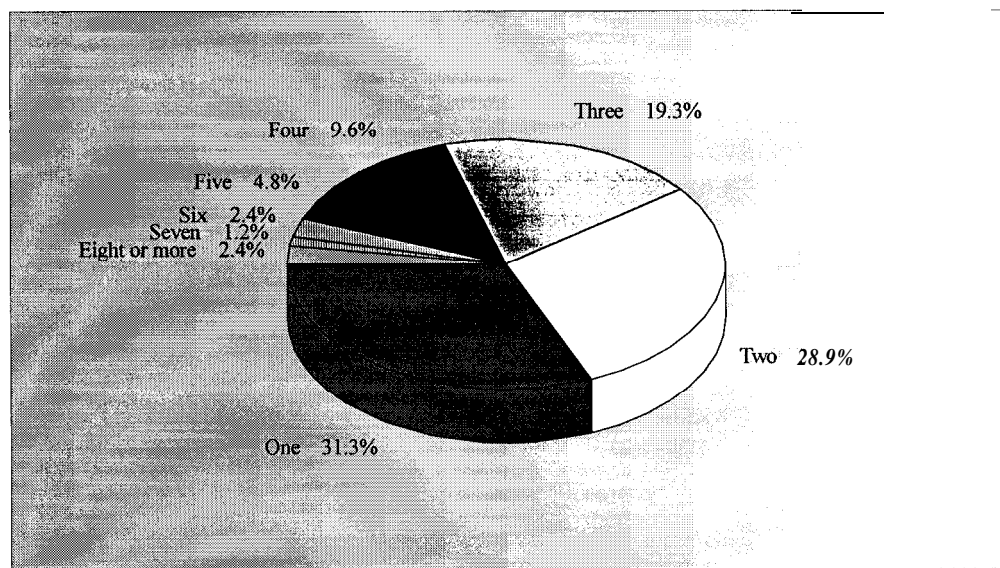


Figure 4. No. of full-time job offers

Where did the 1998 B.Eng. - Civil & Structural Engineering graduates go ?

VIII. Names of employers and job titles

The job titles of the Civil & Structural Engineering graduates in full-time employment and the names of their employers are listed below.

<u>Employers :</u>	<u>Job Titles :</u>
CIVIL SERVICE -	
. HKSAR - Civil Engineering Department	. Civil Engineering Graduate
. HKSAR - Civil Engineering Department	. Civil Engineering Graduate
• HKSAR - Civil Engineering Department	. Civil Engineering Graduate
. HKSAR - Civil Engineering Department	. Civil Engineering Graduate
. HKSAR - Drainage Services Department	. Civil Engineering Graduate
. HKSAR - Drainage Services Department	. Civil Engineering Graduate
. HKSAR - Drainage Services Department	. Civil Engineering Graduate
. HKSAR - Drainage Services Department	. Civil Engineering Graduate
. HKSAR - Drainage Services Department	. Civil Engineering Graduate
. HKSAR - Drainage Services Department	. Civil Engineering Graduate
. HKSAR - Drainage Services Department	. Civil Engineering Graduate
. HKSAR - Environmental Protection Department	• Environmental Engineering Graduate
. HKSAR - Geotechnical Engineering Office	• Civil Engineering Graduate
. HKSAR - Geotechnical Engineering Office	. Civil Engineering Graduate
. HKSAR - Highways Department	. Civil Engineering Graduate
. HKSAR - Highways Department	. Civil Engineering Graduate
. HKSAR - Highways Department	. Civil Engineering Graduate
. HKSAR - Highways Department	. Civil Engineering Graduate
. HKSAR - Highways Department	. Civil Engineering Graduate
. HKSAR - Water Supplies Department	. Civil Engineering Graduate
. HKSAR - Water Supplies Department	• Civil Engineering Graduate
. HKSAR - Works Bureau	• Civil Engineering Graduate
. HKSAR - Works Bureau	. Civil Engineering Graduate
COMMERCE & INDUSTRY -	
. Atkins China Ltd	• Graduate Engineer
. Atkins China Ltd	• Graduate Engineer
. Atkins China Ltd	. Graduate Engineer
. Atkins China Ltd	. Graduate Engineer
. Atkins China Ltd	. Graduate Engineer
• Babcic BMT Harris & Sutherland (HK) Ltd	. Graduate Engineer
. Binnie Black & Veatch (HK) Ltd	. Assistant Engineer
• Binnie Black & Veatch (HK) Ltd	• Assistant Engineer
. Binnie Black & Veatch (HK) Ltd	• Assistant Engineer
. Binnie Black & Veatch (HK) Ltd	. Assistant Engineer
. Binnie Black & Veatch (HK) Ltd	. Assistant Engineer
. Chun Wo Foundation Ltd	. Graduate Engineer
. Chun Wo Holdings Ltd	. Assistant Quantity Surveyor
. Crawford - THG (HK) Ltd	. Loss Adjuster

Where did the 1998 B.Eng. - Civil & Structural Engineering graduates go ?

• Fugio (HK) Ltd	• Assistant Engineer
• Gammon Construction Ltd	• Assistant Design Engineer
• Gammon Construction Ltd	• Assistant Engineer
• Gammon Construction Ltd	• Assistant Engineer
• Greg Wong & Associates Ltd	• Engineer Trainee
• Hong Kong Land & Marine Contractor Ltd	• Assistant Engineer
• Hung Kong Engineering Co Ltd	• Site Engineer
• Hyder Consulting Ltd	• Graduate Engineer
• Hyder Consulting Ltd	• Graduate Engineer
• Hyder Consulting Ltd	• Graduate Engineer
• JMK Consulting Engineers	• Assistant Resident Engineer
• Joseph Chow & Partners Ltd	• Graduate Engineer
• Maunsell Consultants Asia Ltd	• Graduate Engineer
• Maunsell Consultants Asia Ltd	• Graduate Engineer
• Maunsell Consultants Asia Ltd	• Graduate Engineer
• Maunsell Consultants Asia Ltd	• Graduate Engineer
• Maunsell Consultants Asia Ltd	• Graduate Engineer
• Maunsell Consultants Asia Ltd	• Graduate Engineer
• Maunsell Consultants Asia Ltd	• Graduate Engineer
• Maunsell Consultants Asia Ltd	• Graduate Engineer
• Maunsell Consultants Asia Ltd	• Graduate Engineer
• Maunsell Consultants Asia Ltd	• Graduate Engineer
• Maunsell Consultants Asia Ltd	• Graduate Engineer
• Maunsell Consultants Asia Ltd	• Graduate Engineer
• Maunsell Consultants Asia Ltd	• Graduate Engineer
• Maunsell Geotechnical Services Ltd	• Assistant Geotechnical Engineer
• Montgomery Watson (HK) Ltd	• Graduate Engineer
• Montgomery Watson (HK) Ltd	• Graduate Engineer
• Mott Connell Ltd	• Graduate Engineer
• MVA (HK) Ltd	• Assistant Engineer
• MVA (HK) Ltd	• Graduate Traffic Engineer
• MVA (HK) Ltd	• Graduate Traffic Engineer
• Ove Arup & Partners (HK) Ltd	• Graduate Engineer
• Ove Arup & Partners (HK) Ltd	• Graduate Engineer
• Ove Arup & Partners (HK) Ltd	• Graduate Engineer
• Ove Arup & Partners (HK) Ltd	• Graduate Engineer
• Ove Arup & Partners (HK) Ltd	• Graduate Engineer
• Ove Arup & Partners (HK) Ltd	• Graduate Engineer
• Ove Arup & Partners (HK) Ltd	• Graduate Engineer
• Ove Arup & Partners (HK) Ltd	• Graduate Engineer
• Rich Sea Construction Ltd	• Site Engineer
• Scott Wilson (HK) Ltd	• Assistant Engineer
• Shui On Building Contractor	• Graduate Engineer
• Shui On Building Contractor	• Graduate Engineer
• South Sea	• Site Engineer
• Work & Cheng Consulting Engineers Ltd	• Graduate Engineer
• Zen Pacific Civil Contractor Ltd	• Graduate Engineer
• Organization's name not reported	• Assistant Project Manager

No Response = 1

Table 5. List of employers and job titles

Note: Some alumni have indicated willingness to talk to individual students about their work. Their contact telephone number can be obtained from counsellors at CEPC.

Where did the 1998 B.Eng. - Civil & Structural Engineering graduates go ?

- IX.** Similar information on graduates from other disciplines of study are available for reference in the Careers Library. Please enquire with the CEPC.

Careers Education and Placement Centre
3/F Wong Chuang Lai Wah Building
Meng Wah Complex
The University of Hong Kong
Pokfulam Road
Hong Kong

Telephone : 28592314
Fax : 2559 5238
E-Mail : CEPC@HKUCC.HKU.HK
Homepage : <http://www.hku.hk/cepc>

Opening Hours : Monday - Friday (9:00 a.m. to 5:30 p.m.)
Saturday (9:00 a.m. to 12:00 p.m.)

Cindy Chan

June, 1999

The analysis is based on information provided by the respondents, and the Careers Education & Placement Centre should not be held responsible for any errors arising therefrom.

No part of this report may be reproduced in any form or by whatever means,
without written permission from the Director of the Careers Education and Placement Centre,
The University of Hong Kong