

Where did the 1998 B.Econ. graduates go ?

I. Introduction

The information contained in this paper is extracted from the Graduate Employment Survey of 1998 to answer the following questions about Bachelor of Economics graduates : -

- How were they employed six months after graduation ?
- Of those who pursued further studies, what programmes did they follow ?
- Of those who were employed full-time, how long did it take them to secure their first job offer ?
- In which sectors were they employed ?
- How much did they receive in salary ?
- How many job offers did they receive ?
- Who were their employers and what were their job titles ?

II. Employment Situation in 1998

Out of 71 B.Econ. graduates, 68 responded to our survey, representing a response rate of 96%. Of these, 63% (or 43 graduates) were in full-time employment within six months of graduation. 21% (or 14 graduates) went on for further studies. Another 16% (or 11 graduates) were still seeking full-time employment at the time of the survey. (Table 1)

	B.Econ.										HKU Overall*					
	Total				Male				Female							
	'98		'97		'98		'97		'98		'97					
	No.	%	No.	%	No.	%	No.	%	No.	%	No.	%	No.	%		
<i>No. of respondents</i>	68	100	116	100	26	100	36	100	42	100	80	100	2383	100	2272	100
<i>F/T employed</i>	43	63.2	108	93.1	12	46.2	34	94.4	31	73.8	74	92.5	1701	71.4	1829	80.5
<i>P/T employed seeking F/T job</i>	5	7.4	0	0	1	3.8	0	0	4	9.5	0	0	94	3.9	37	1.6
<i>Unemployed seeking F/T job</i>	6	8.8	1	0.9	6	23.1	1	2.8	0	0	0	0	157	6.6	53	2.3
<i>Further studies</i>	14	20.6	7	6.0	7	26.9	1	2.8	7	16.7	6	7.5	413	17.3	339	14.9
<i>Emigration/home country</i>	0	0	0	0	0	0	0	0	0	0	0	0	3	0.1	4	0.2
<i>Not seeking F/T job</i>	0	0	0	0	0	0	0	0	0	0	0	0	15	0.6	10	0.4

Table 1. Employment situation

* HKU overall refers to the figure for the total HKU population and includes M.B.,B.S. and B.D.S. graduates.

Where did the 1998 B.Econ. graduates go ?

III. Further Studies

Compared with 1997, there were more graduates going on for further studies (21% vs. 6%). Three graduates pursued postgraduate studies in the same discipline as their first degree while eight graduates studied social sciences and one graduate each studied science, education and business administration/management. Of these, thirteen graduates were enrolled in local tertiary institutions and the other went abroad to U.K.. Table 2 shows the academic programmes pursued & Table 3 shows the source of finance.

Fields of Study	Academic Programmes			
	M.Phil.	Master (Coursework)	Postgraduate Certificate	Bachelor
Economics		3		
Social Sciences	2	6		
Science		1		
Education			1	
Business Administration/Management				1

Table 2. Academic programmes

Source of Finance	No. of Graduates
Own Funds	6
Teaching Assistantship/Studentship	7
Full Scholarship	1

Table 3. Source of finance for further studies

IV. Time Taken to Secure Employment

Among those graduates who were in full-time employment, 93% secured their first job offer before the end of September. The figure increased to 100% by the end of December. (Figure 1)

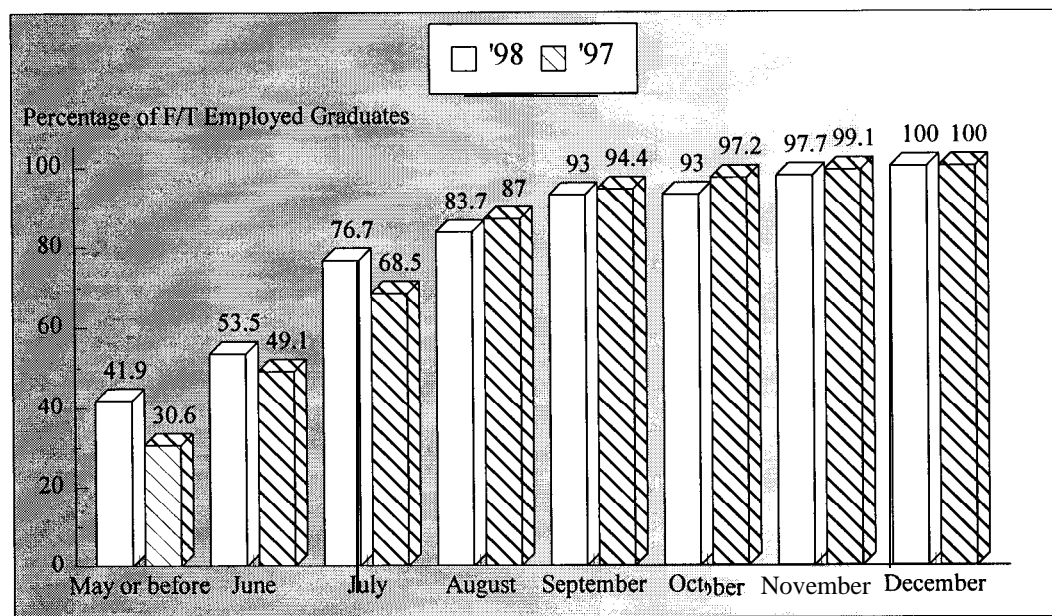


Figure 1. Time taken to secure employment

Where did the 1998 B. Econ. graduates go ?

V. Employment Sectors

65% (or 28 graduates) of the B.Econ. graduates were employed in commerce & industry, followed by 23% (or 10 graduates) in the civil service. Another 12% (or 5 graduates) joined the education sector. (Figures 2 & 3)

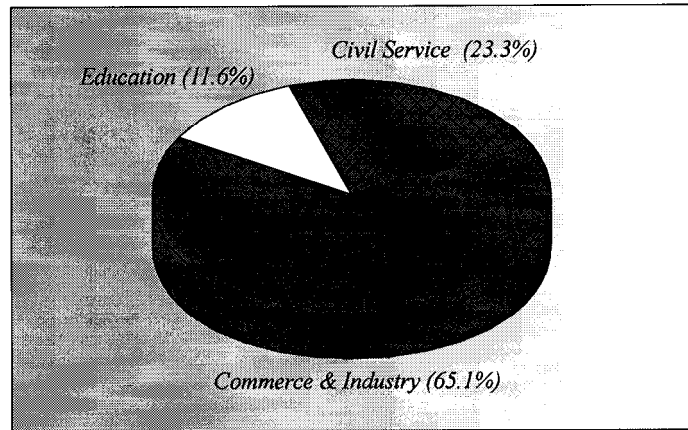


Figure 2. Employment sectors

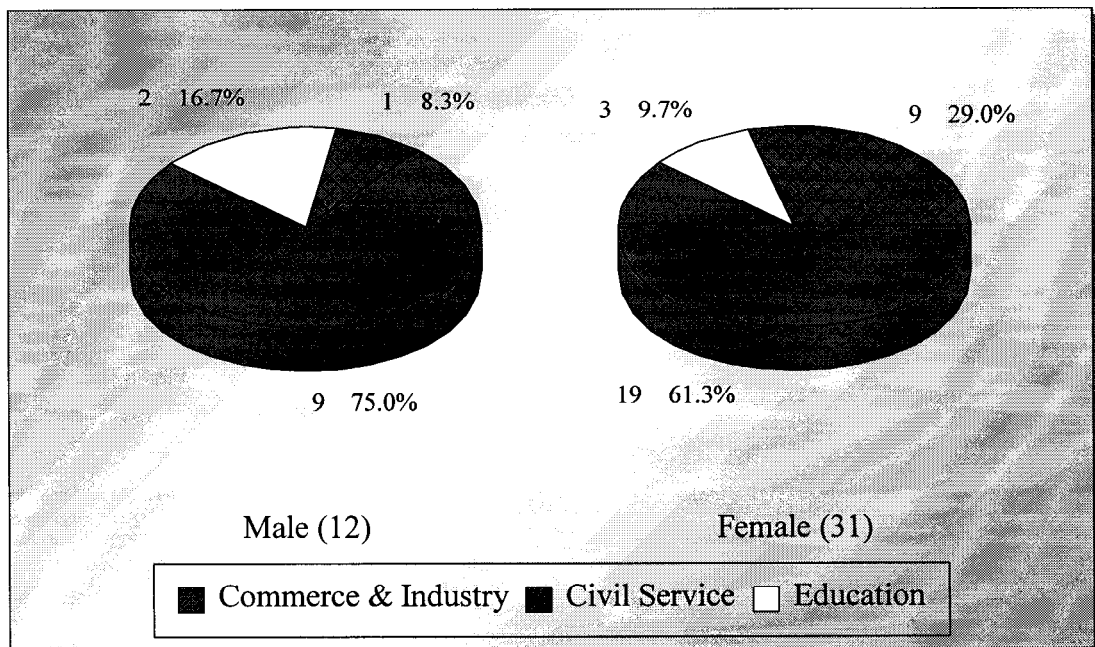


Figure 3. Employment sectors by sex

Where did the 1998 B.Econ. graduates go ?

VI. Basic Salary and Gross Income

In general, the average income of the B.Econ. graduates was a little higher than that of their predecessors in the previous year. (Table 4)

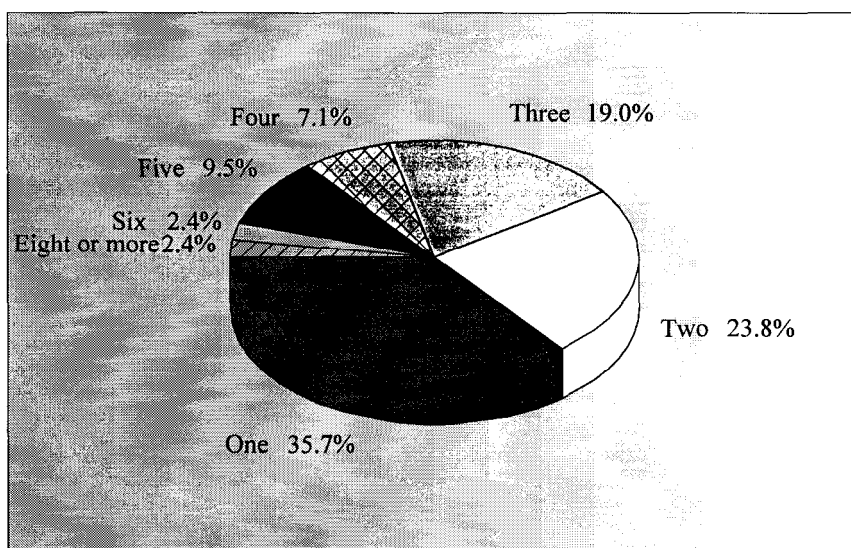
	<i>Basic Salary</i>				<i>Gross Income</i>			
	B.Econ.		HKU Average*		B.Econ.		HKU Average*	
	'98	'97	'98	'97	'98	'97	'98	'97
Mean	\$14,896	\$12,992	\$15,496	\$15,749	\$15,662	\$14,381	\$16,557	\$17,552
Median	\$12,300	\$11,685	\$12,300	\$12,500	\$13,325	\$13,063	\$13,325	\$14,521
Minimum	\$8,000	\$8,000	\$1,000	\$4,400	\$8,667	\$8,992	\$5,000	\$5,000
Maximum	\$35,285	\$33,355	\$58,000	\$59,000	\$35,285	\$33,355	\$59,000	\$74,000

Table 4. Basic salary and gross income

* HKU average refers to the figure for the total HKU population and includes M.B., B.S. and B.D.S. graduates.

VII. Number of Full-Time Job Offers

Of those in full-time employment, 64% of the graduates had more than one job offer. 41% reported having received three to eight or more job offers. On average, each graduate received 2.5 job offers. (Figure 4)



No Response = 1

Figure 4. No. of full-time job offers

Where did the 1998 B.Econ. graduates go ?

VIII. Names of Employers and Job Titles

The job titles of the B.Econ. graduates in full-time employment and the names of their employers are listed below.

<u><i>Employers :</i></u>	<u><i>Job Titles :</i></u>
CIVIL SERVICE -	
• HKSAR	. Executive Officer
• HKSAR - Civil Service Bureau	. Executive Officer
• HKSAR - Department of Health	. Executive Officer
• HKSAR - Education & Manpower Bureau	. Executive Officer
• HKSAR - Home Affairs Bureau	. Executive Officer
• HKSAR - Home Affairs Department	. Executive Officer
• HKSAR - Labour Department	. Assistant Labour Officer
• HKSAR - Provisional Urban Council	. Logistics Assistant
• HKSAR - Trade & Industry Bureau	• Administrative Officer
• HKSAR - Transport Department	. Executive Office
EDUCATION -	
• Buddhist Kok Kwong Secondary School	. Graduate Master
• Islamic Kasim Tuet Memorial College	. Supply Teacher
• Pak Kau Girls' School	• Graduate Master
• POH Chan Kwok Wai Primary School	. Certificate Master
• SKH Tang Shiu Kin Secondary School	. Graduate Master
COMMERCE & INDUSTRY -	
• American International Assurance Co Ltd.	. Financial Planner
• Arthur Andersen	. Staff Accountant
• Chun Wo Construction & Engineering Ltd	• Management Trainee
• Crystal Group of Companies	. Overseas Operations Support Assistant
• Deloitte Touche Tohmatsu	. Staff Accountant
• Deloitte Touche Tohmatsu	. Staff Accountant
• Faster China Investment Ltd	. Executive Assistant
• Hewlett-Packard (HK) Ltd	• Contract Administrator
• Hong Kong Telecom	. Tele-Marketing Executive
• Hutchison Telecom	. Management Trainee
• Jumpin Gym (USA) Ltd	. Administrative Officer
• KPMG Peat Marwick	• Assistant Accountant
• KPMG Peat Marwick	• Assistant Accountant
• L P Lammas (China) Ltd	. Graduate Trainee
• Levox Industrial Co Ltd	. Secretary
• Linkage Online Ltd	• Sales Support Coordinators
• McDonald's Restaurants (HK) Ltd	. Manager Trainee
• Multi M Co Ltd	• Sales Representative
• Nan Yang Commercial Bank Ltd	• Officer Trainee
• New York Life Insurance Worldwide Ltd	. Marketing Executive
• Pricewaterhouse Coopers	• Associate
• Pricewaterhouse Coopers	. Tax Associate

Where did the 1998 B.Econ. graduates go ?

• Pricewaterhouse Coppers	. Tax Associate
. Procter & Gamble (HK) Ltd	. Management Trainee
. Tung Yung Stationery Manufactory Co Ltd	. Sales Executive
. Union Bank of Switzerland	. Customer Service Representative
. Organization's name not reported	. Operation Assistant
. Organization's name not reported	. Sales Executive

Table 5. List of employers and job titles

Note: Some alumni have indicated willingness to talk to individual students about their work. Their contact telephone number can be obtained from counsellors at CEPC.

IX. Similar information on graduates from other disciplines of study are available for reference in the Careers Library. Please enquire with the CEPC.

Careers Education and Placement Centre
3/F Wong Chuang Lai Wah Building
Meng Wah Complex
The University of Hong Kong
Pokfulam Road
Hong Kong

Telephone : 28592314
Fax : 2559 5238
E-Mail : CEPC@HKUCC.HKU.HK
Homepage : <http://www.hku.hk/cepc>

Opening Hours : Monday - Friday (9:00 a.m. to 5:30 p.m.)
Saturday (9:00 a.m. to 12:00 p.m.)

Cindy Chan

June, 1999

The analysis is based on information provided by the respondents, and the Careers Education & Placement Centre should not be held responsible for any errors arising therefrom.

No part of this report may be reproduced in any form or by whatever means, without written permission from the Director of the Careers Education and Placement Centre, The University of Hong Kong