

Where did the 1998 B.Soc.Sc. - Psychology graduates go ?

I. Introduction

The information contained in this paper is extracted from the Graduate Employment Survey of 1998 to answer the following questions about Bachelor of Social Sciences graduates with major in Psychology : -

- How were they employed six months after graduation ?
- Of those who pursued further studies, what programmes did they follow ?
- Of those who were employed full-time, how long did it take them to secure their first job offer ?
- In which sectors were they employed ?
- How much did they receive in salary ?
- How many job offers did they receive ?
- Who were their employers and what were their job titles ?

II. Employment Situation in 1998

Of the 64 respondents who majored in Psychology, 66% (or 42 graduates) were in full-time employment within six months of graduation. 16% (or 10 graduates) went on for further studies. Another 17% (or 11 graduates) were still seeking full-time employment at the time of the survey. (Table 1)

	B.Soc.Sc. - Psychology						HKU Overall*									
	Total		Male		Female											
	'98	'97	'98	'97	'98	'97	'98	'97	'98	'97						
	No.	%	No.	%	No.	%	No.	%	No.	%						
<i>No. of respondents</i>	64	100	49	100	13	100	7	100	51	100	42	100	2383	100	2272	100
<i>F/T employed</i>	42	65.6	40	81.6	8	61.5	4	57.1	34	66.7	36	85.7	1701	71.4	1829	80.5
<i>P/T employed seeking F/T job</i>	5	7.8	0	0	1	7.7	0	0	4	7.8	0	0	94	3.9	37	1.6
<i>Unemployed seeking F/T job</i>	6	9.4	2	4.1	2	15.4	0	0	4	7.8	2	4.8	157	6.6	53	2.3
<i>Further studies</i>	10	15.6	7	14.3	2	15.4	3	42.9	8	15.7	4	9.5	413	17.3	339	14.9
<i>Emigration/home country</i>	0	0	0	0	0	0	0	0	0	0	0	0	3	0.1	4	0.2
<i>Not seeking F/T job</i>	1	1.6	0	0	0	0	0	0	1	2	0	0	15	0.6	10	0.4

Table 1. Employment situation

* HKU overall refers to the figure for the total HKU population and includes M.B.,B.S. and B.D.S. graduates.

Where did the 1998 B.Soc.Sc. - Psychology graduates go ?

III. Further Studies

Seven graduates pursued postgraduate studies in the same discipline as their first degree while one graduate each studied education, law and language. Of these, nine graduates were enrolled in local tertiary institutions and one graduate went abroad to Japan. Table 2 shows the academic programmes pursued & Table 3 shows the source of finance.

Fields of Study	Academic Programmes				
	<i>M.Phil</i>	<i>Master (Coursework)</i>	<i>Postgraduate Certificate</i>	<i>Bachelor</i>	<i>Adv.Diploma/ Diploma</i>
<i>Social Sciences</i>	3	3	1		
<i>Education</i>			1		
<i>Law</i>				1	
<i>Language</i>					1

Table 2. Academic programmes

Source of Finance	No. of Graduates
<i>Own Funds</i>	7
<i>Teaching Assistantship/Studentship</i>	3

Table 3. Source of finance for further studies

IV. Time Taken to Secure Employment

Among those graduates who were in full-time employment, 88% secured their job offer before the end of September. The figure increased to 100% by the end of December. (Figure 1)

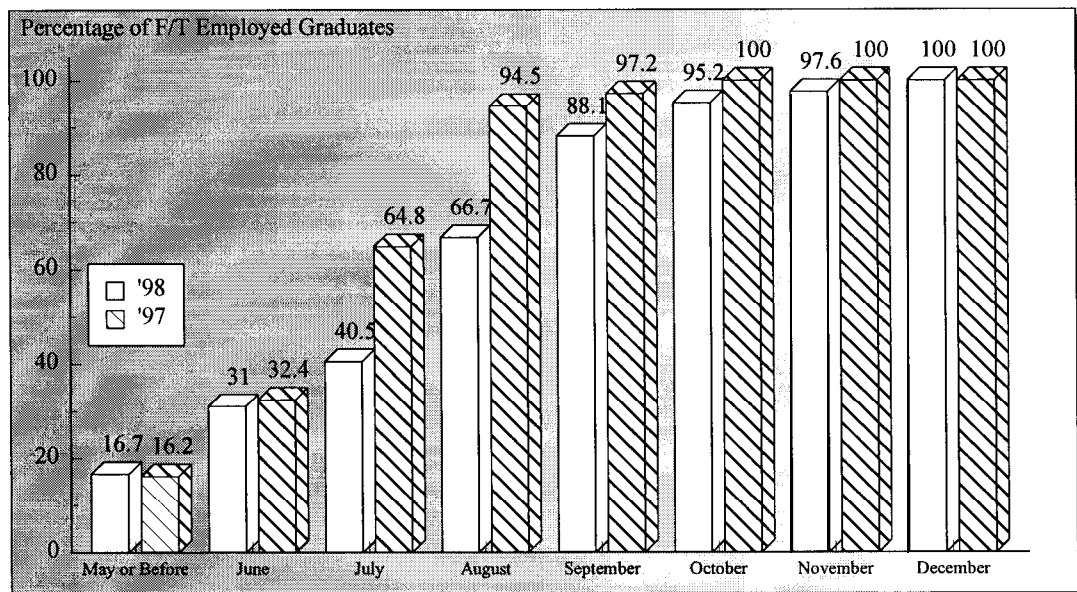


Figure 1. Time taken to secure employment

Where did the 1998 B.Soc.Sc. - Psychology graduates go ?

V. Employment Sectors

64% (or 27 graduates) of the Psychology graduates were employed in commerce & industry, followed by 14% (or 6 graduates) in education and 12% (or 5 graduates) in community, social & personal services. The remaining 9.5% (or 4 graduates) joined the civil service. (Figures 2 & 3)

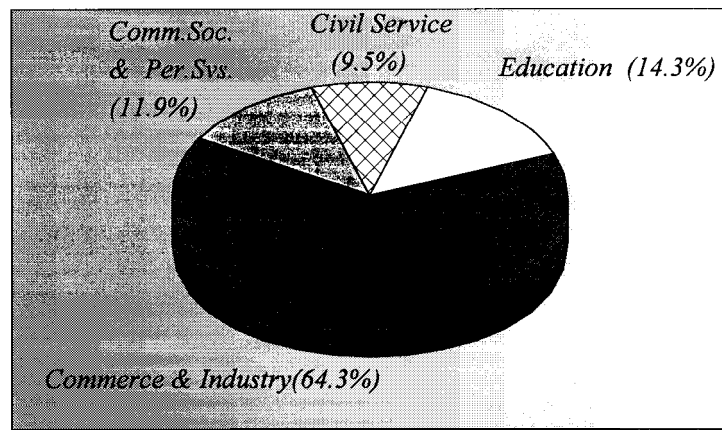


Figure 2. Employment sectors

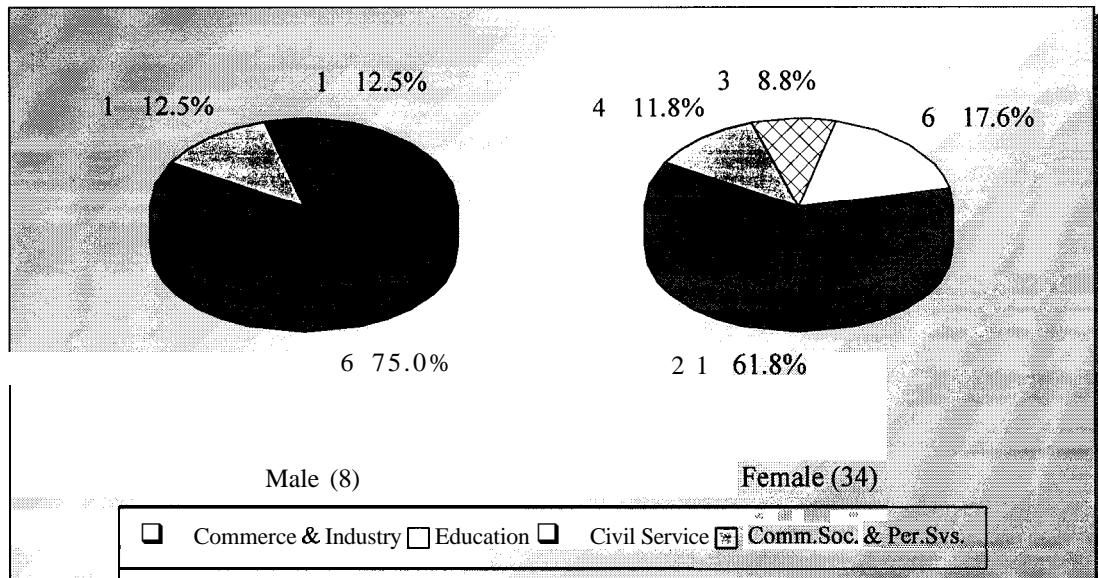


Figure 3. Employment sectors by sex

Where did the 1998 B.Soc.Sc. - Psychology graduates go ?

VI. Basic Salary and Gross Income

The remuneration received by Psychology graduates is shown in Table 4.

	<i>Basic Salary</i>				<i>Gross Income</i>			
	B.Soc.Sc. - Psychology		HKU Average*		B.Soc.Sc. - Psychology		HKU Average*	
	'98	'97	'98	'97	'98	'97	'98	'97
<i>Mean</i>	\$12,077	\$13,729	\$15,496	\$15,749	\$12,772	\$15,062	\$16,557	\$17,552
<i>Median</i>	\$10,000	\$11,700	\$12,300	\$12,500	\$10,833	\$13,125	\$13,325	\$14,521
<i>Minimum</i>	\$8,000	\$8,550	\$1,000	\$4,400	\$8,000	\$9,548	\$5,000	\$5,000
<i>Maximum</i>	\$21,500	\$30,600	\$58,000	\$59,000	\$21,500	\$32,833	\$59,000	\$74,000

Table 4. Basic salary and gross income

* HKU average refers to the figure for the total HKU population and includes M.B.,B.S. and B.D.S. graduates.

VII. Number of Full-Time Job Offers

Of those in full-time employment, 48% of the graduates had more than one job offer. 21% reported having received three or four job offers. (Figure 4)

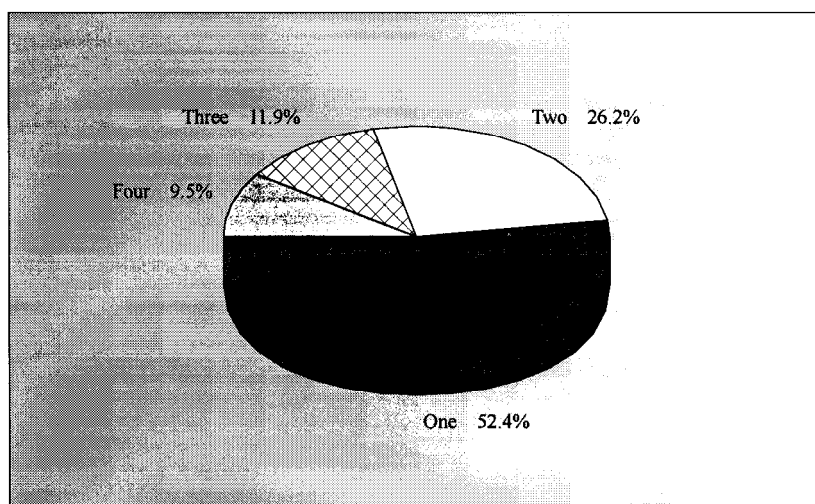


Figure 4. No. of full-time job offers

Where did the 1998 B.Soc.Sc. - Psychology graduates go ?

VIII. Names of Employers and Job Titles

The job titles of the Psychology graduates in full-time employment and the names of their employers are listed below.

<u>Employers :</u>	<u>Job Titles :</u>
CIVIL SERVICE -	
<ul style="list-style-type: none">. HKSAR. HKSAR - Home Affairs Department. HKSAR - Labour Department. HKSAR - Trade Department	<ul style="list-style-type: none">• Assistant Information Officer• Chinese Language Officer• Assistant Labour Officer• Assistant Trade Officer
EDUCATION -	
<ul style="list-style-type: none">. Carmel Bunnan Tong Memorial Secondary School. SKH Yan Lap Primary School. The Chinese University of Hong Kong. The Chinese University of Hong Kong. The Hong Kong Polytechnic University. The University of Hong Kong	<ul style="list-style-type: none">• Graduate Master• Certificate Master• Research Assistant• Research Assistant• Research Assistant• Research Assistant
COMMUNITY, SOCIAL & PERSONAL SERVICE -	
<ul style="list-style-type: none">. Association for Engineering & Medical Volunteer Services. Hong Kong Arts Festival Society. Hong Kong Sports Development Board. Remarkable Tutorial Centre. Standing Committee on Language Education & Research	<ul style="list-style-type: none">• Assistant Placement Officer• Customer Service Officer• Research Assistant• Training Officer• Research Assistant
COMMERCE & INDUSTRY -	
<ul style="list-style-type: none">• Bambi (HK) Ltd• Bossini• British Telecom (HK) Ltd• City Telecom• Computer Forms (HK) Ltd• Dandy Interior Product Ltd• Data Personnel• Deacons Graham & James• Eagle Star Insurance Co Ltd• Giordano Ltd• HK Toy Centre• Jardine Securior Group• Jumpin Gym (USA) Ltd• M & M Properties Ltd• Nelson Jewelry• Occasions PR Network• Ogden Aviation (HK) Ltd• Oxford University Press	<ul style="list-style-type: none">• Administrative Assistant• Human Resources Assistant• Customer Service Assistant• Account Manager• Sales Executive• Sales Support Administrator• Recruitment Supervisor Trainee• Patent Assistant• Insurance Consultant• Management Trainee• Export Sales Executive• Contract Administrator• Purchasing Officer• Administration Assistant• Sales Executive• Account Executive• Passenger Service Officer• Editorial Assistant

Where did the 1998 B.Soc.Sc. - Psychology graduates go ?

<ul style="list-style-type: none">• Procter & Gamble• San Diego Business Development Office, Asia• Sofres FSA• Staci Ltd• Star Focus International Co Ltd• Strategic Focus Research & Consultancy Ltd• Toshiba Electronics Asia, Ltd• Worldwide Convention	<ul style="list-style-type: none">• Account Executive• Project Assistant• Research Assistant• Customer Services Executive• Marketing Executive• Research Executive• Clerk• Marketing Officer
---	---

No Response = 1

Table 5. List of employers and job titles

Note : Some alumni have indicated willingness to talk to individual students about their work. Their contact telephone number can be obtained from counsellors at CEPC.

Where did the 1998 B.Soc.Sc. - Psychology graduates go ?

- IX.** Similar information on graduates from other disciplines of study is available for reference in the Careers Library. Please enquire with the CEPC.

Careers Education and Placement Centre
3/F Wong Chuang Lai Wah Building
Meng Wah Complex
The University of Hong Kong
Pokfulam Road
Hong Kong

Telephone : 28592314
Fax : 2559 5238
E-Mail : CEPC@HKUCC.HKU.HK
Homepage : <http://www.hku.hk/cepc>

Opening Hours : Monday - Friday (9:00 a.m. to 5:30 p.m.)
Saturday (9:00 a.m. to 12:00 p.m.)

Cindy Chan

August, 1999

The analysis is based on information provided by the respondents, and the Careers Education & Placement Centre should not be held responsible for any errors arising therefrom.

No part of this report may be reproduced in any form or by whatever means,
without written permission from the Director of the Careers Education and Placement Centre,
The University of Hong Kong