

Where did the 1998 B.S. W. graduates go ?

I. Introduction

The information contained in this paper is extracted from the Graduate Employment Survey of 1998 to answer the following questions about Bachelor of Social Work graduates : -

- How were they employed six months after graduation ?
- Of those who pursued further studies, what programmes did they follow ?
- Of those who were employed full-time, how long did it take them to secure their first job offer ?
- In which sectors were they employed ?
- How much did they receive in salary ?
- How many job offers did they receive ?
- Who were their employers and what were their job titles ?

II. Employment Situation in 1998

Out of 73 B.S.W. graduates, 68 responded to our survey, representing a response rate of 93%. Of these, 66% (or 45 graduates) were in full-time employment within six months of graduation. 2.9% (or 2 graduates) went on for further studies. Another 29% (or 20 graduates) were still looking for full-time employment at the time of the survey. (Table 1)

	B.S.W.										HKU Overall*					
	Total				Male				Female							
	'98		'97		'98		'97		'98		'97					
	No.	%	No.	%	No.	%	No.	%	No.	%	No.	%	No.	%		
<i>No. of respondents</i>	68	93.2	72	100	16	100	12	100	52	100	60	100	2383	100	2272	100
<i>F/T employed</i>	45	66.2	61	84.7	12	75.0	11	91.7	33	63.5	50	83.3	1701	71.4	1829	80.5
<i>P/T employed seeking F/T job</i>	12	17.6	7	9.7	1	6.3	0	0	11	21.2	7	11.7	94	3.9	37	1.6
<i>Unemployed seeking F/T job</i>	8	11.8	2	2.8	3	18.8	0	0	5	9.6	2	3.3	157	6.6	53	2.3
<i>Further studies</i>	2	2.9	1	1.4	0	0	1	8.3	2	3.8	0	0	413	17.3	339	14.9
<i>Emigration/home country</i>	0	0	0	0	0	0	0	0	0	0	0	0	3	0.1	4	0.2
<i>Not seeking F/T job</i>	1	1.5	1	1.4	0	0	0	0	1	1.9	1	1.7	15	0.6	10	0.4

Table 1. Employment situation

* HKU overall refers to the figure for the total HKU population and includes M.B.,B.S. and B.D.S. graduates.

Where did the 1998 B.S. W. graduates go ?

III. Further Studies

Two graduates pursued postgraduate studies in the same discipline as their first degree. Of these, one graduate was enrolled in a local tertiary institution and the other one went abroad to U.K.. Table 2 shows the academic programmes pursued & Table 3 shows the source of finance.

Field of Study	Academic programmes	
	Postgraduate Certificate	Bachelor
Social Sciences	1	1

Table 2. Academic programme

Source of Finance	No. of Graduates
Own Funds	2

Table 3. Source of finance for further studies

IV. Time Taken to Secure Employment

Among those who were in full-time employment, 80% secured their first job offer before the end of September. The figure increased to 100% by the end of December. (Figure 1)

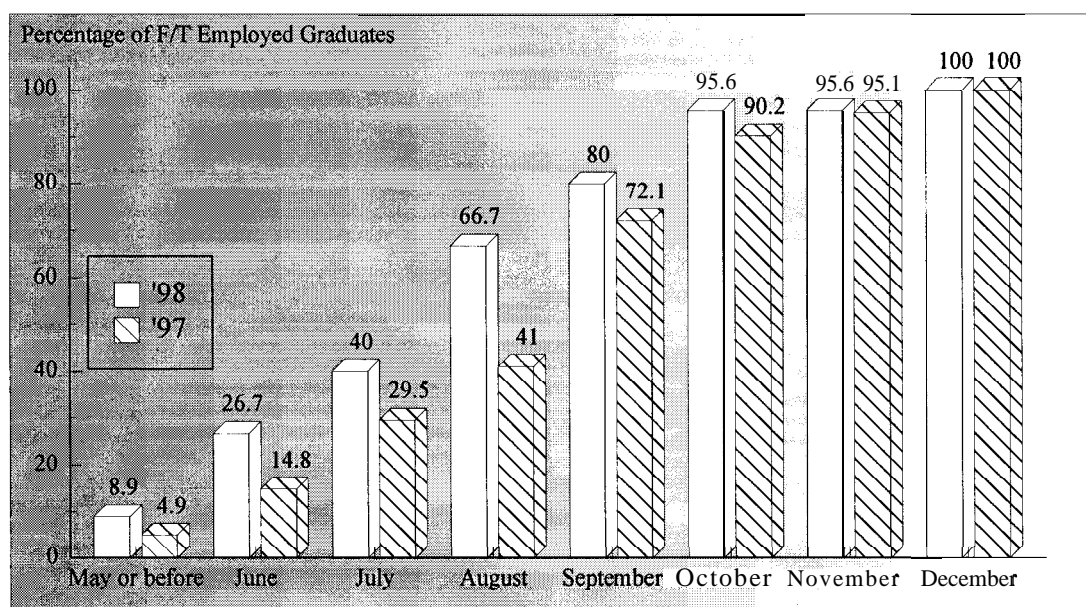


Figure 1. Time taken to secure employment

Where did the 1998 B.S. W. graduates go ?

V. Employment Sectors

78% (or 35 graduates) of the B.S.W. graduates were employed in community, social & personal services, followed by 8.9% (or 4 graduates) in civil service. Another 6.7% (or 3 graduates) each joined the education sector and commerce & industry. (Figures 2 & 3)

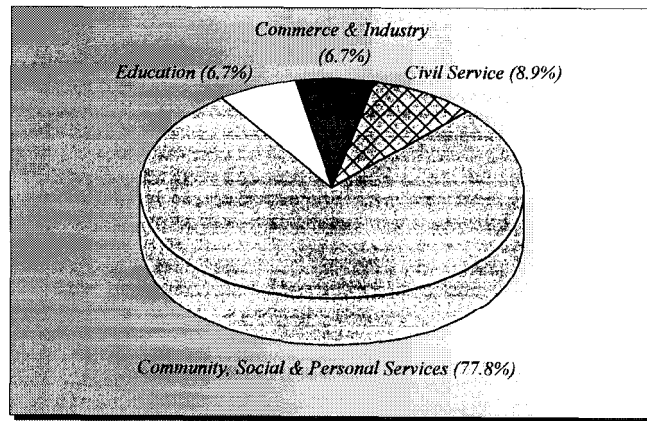


Figure 2. Employment sectors

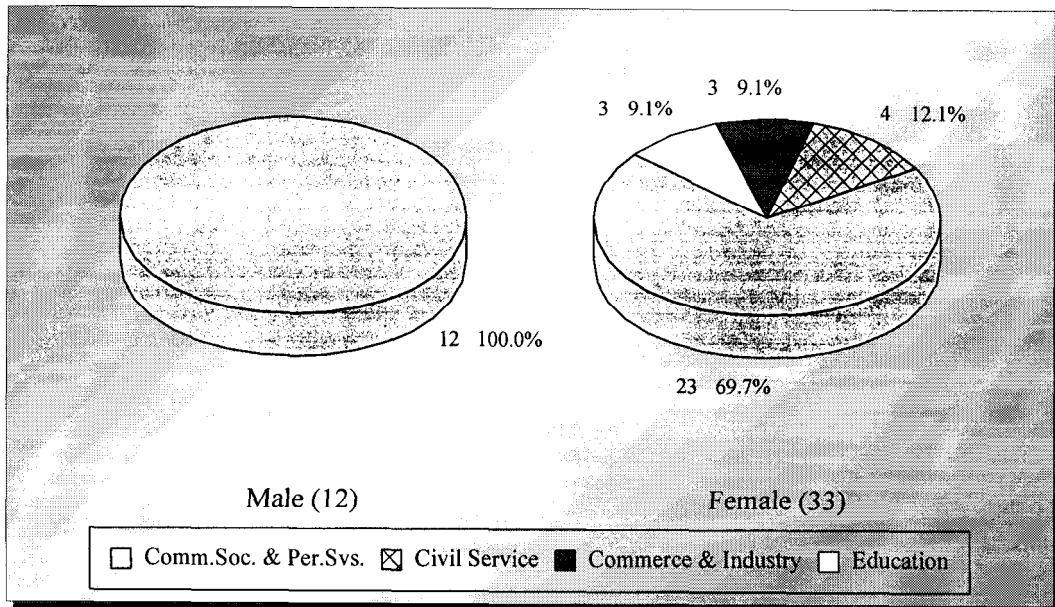


Figure 3. Employment sectors by sex

Where did the 1998 B.S. W. graduates go ?

VI. Basic Salary and Gross Income

The remuneration received by the B.S.W. graduates is shown in Table 4.

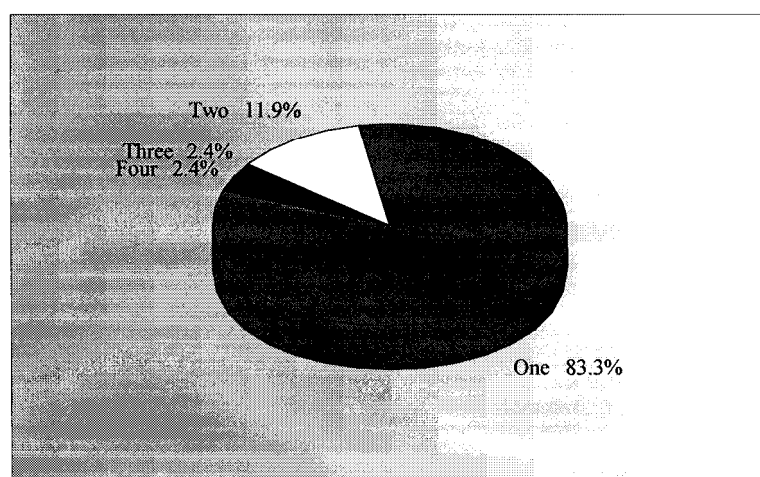
	<i>Basic Salary</i>				<i>Gross Income</i>			
	B.S.W.		HKU Average*		B.S.W.		HKU Average*	
	'98	'97	'98	'97	'98	'97	'98	'97
<i>Mean</i>	\$15,523	\$16,815	\$15,496	\$15,749	\$15,863	\$17,385	\$16,557	\$17,552
<i>Median</i>	\$14,300	\$18,000	\$12,300	\$12,500	\$15,000	\$18,950	\$13,325	\$14,521
<i>Minimum</i>	\$7,000	\$8,000	\$1,000	\$4,400	\$7,000	\$8,000	\$5,000	\$5,000
<i>Maximum</i>	\$25,000	\$24,700	\$58,000	\$59,000	\$25,000	\$28,817	\$59,000	\$74,000

Table 4. Basic salary and gross income

* HKU average refers to the figure for the total HKU population and includes M.B.,B.S. and B.D.S. graduates.

VII. Number of Full-Time Job Offers

Of those in full-time employment, 17% of the graduates had more than one job offer. 4.8% reported having received three to four job offers. On average, each graduate received 1.2 job offers. (Figure 4)



No Response = 3

Figure 4. No. of full-time job offers

Where did the 1998 B.S. W. graduates go ?

VIII. Names of Employers and Job Titles

The job titles of the B.S.W. graduates in full-time employment and the names of their employers are listed below.

<u><i>Employers :</i></u>	<u><i>Job Titles :</i></u>
CIVIL SERVICE -	
• HKSAR - Social Welfare Department	• Assistant Social Work Officer
• HKSAR - Social Welfare Department	• Assistant Social Work Officer
• HKSAR - Social Welfare Department	• Assistant Social Work Officer
• HKSAR - Official Receiver's Office	• Assistant Clerical Officer
EDUCATION -	
• The University of Hong Kong	• Research Assistant
• Tsing Yi Trade Association Primary School	• Certificate Master
• Tung Wah Group of Hospitals	• Certificate Master
COMMUNITY, SOCIAL & PERSONAL SERVICES -	
• Bonaventure Youth Centre	• Assistant Social Work Officer
• Bonaventure Youth Centre	• Youth Worker
• Bonaventure Youth Centre	• Youth Worker
• Caritas	• Assistant Social Work Officer
• Caritas	• Welfare Worker
• Caritas	• Welfare Worker
• Caritas - HK	• Assistant Social Work Officer
• Caritas - HK	• Assistant Social Work Officer
• Caritas - HK	• Assistant Social Work Officer
• Caritas - HK	• Welfare Worker
• Christian & Missionary Alliance Church	• Assistant Social Work Officer
• Faith Learning Centre	• Computer Clerk
• HK Children of Youth Service	• School Social Worker
• HK Down Syndrome Association	• Assistant Social Work Officer
• Hok Yau Club	• Social Worker
• Hong Kong Campus Crusade for Christ	• Campus Staff
• Hong Kong Campus Crusade for Christ	• Trainee
• Hong Kong Family Welfare Society	• Assistant Social Work Officer
• Hong Kong Family Welfare Society	• Assistant Social Work Officer
• Hong Kong Red Cross	• Programme Secretary
• Kely Support Group	• Outreach Worker
• Legislation & Electoral Office	• Assistant Clerical Officer
• Legislative Councillor Office	• Legislative Councillor Assistant
• North District Hospital	• Clerk
• Office of Dr Law Chi Kwong Legislative Councillor	• Legislative Councillor Assistant
• SKH All Saints' Church	• Evangelist
• SKH Sheung Shui Social Service Centre	• Assistant Social Work Officer
• Target Education Centre	• Tutor
• The Hong Kong Federation of Youth Groups	• Assistant Social Work Officer
• The Hong Kong Society for Rehabilitation	• Assistant Social Work Officer

Where did the 1998 B.S. W. graduates go ?

<ul style="list-style-type: none"> • The Salvation Army • The Salvation Army Heng On Hostel • The Society for the Rehabilitation of Offenders • Tung Wah Group of Hospitals • Wai Ji Christian Service 	<ul style="list-style-type: none"> • Team Leader • Social Worker • Assistant Social Work Officer • Assistant Social Work Officer • Welfare Worker
COMMERCE & INDUSTRY -	
<ul style="list-style-type: none"> • Allen Book Co • Apple Daily Ltd • Hong Kong Dason Paper Products Co Ltd 	<ul style="list-style-type: none"> • Marketing Assistant • Human Resources Officer • Assistant Merchandiser

Table 5. List of employers and job titles

Note: Some alumni have indicated willingness to talk to individual students about their work. Their contact telephone number can be obtained from counsellors at CEPC.

IX. Similar information on graduates from other disciplines of study are available for reference in the Careers Library. Please enquire with the CEPC.

Careers Education and Placement Centre
3/F Wong Chuang Lai Wah Building
Meng Wah Complex
The University of Hong Kong
Pokfulam Road
Hong Kong

Telephone : 28592314
Fax : 2559 5238
E-Mail : CEPC@HKUCC.HKU.HK
Homepage : <http://www.hku.hk/cepc>

Opening Hours : Monday - Friday (9:00 a.m. to 5:30 p.m.)
Saturday (9:00 a.m. to 12:00 p.m.)

Cindy Chan

June, 1999

The analysis is based on information provided by the respondents, and the Careers Education & Placement Centre should not be held responsible for any errors arising therefrom.

No part of this report may be reproduced in any form or by whatever means, without written permission from the Director of the Careers Education and Placement Centre, The University of Hong Kong