

Where did the 1998 B.A. graduates go ?

I. Introduction

The information contained in this paper is extracted from the Graduate Employment Survey of 1998 to answer the following questions about Bachelor of Arts graduates : -

- . How were they employed six months after graduation ?
- . Of those who pursued further studies, what programmes did they follow ?
- . Of those who were employed full-time, how long did it take them to secure their first job offer ?
- . In which sectors were they employed ?
- . How much did they receive in salary ?
- . How many job offers did they receive ?
- Who were their employers and what were their job titles ?

II. Employment Situation in 1998

Of the 546 B.A. graduates, 509 responded to our survey, representing a response rate of 93%. Of these, 72% (or 366 graduates) were in full-time employment within six months of graduation. 15% (or 75 graduates) went on for further studies. Another 11% (or 58 graduates) were still seeking full-time employment at the time of the survey. (Table 1)

	B.A.								HKU Overall*							
	Total				Male				Female							
	'98		'97		'98		'97		'98		'97					
	No.	%	No.	%	No.	%	No.	%	No.	%	No.	%				
<i>No. of respondents</i>	509	100	473	100	79	100	58	100	430	100	415	100	2383	100	2272	100
<i>F/T employed</i>	366	71.9	375	79.3	45	57.0	39	67.2	321	74.7	336	81.0	1701	71.4	1829	80.5
<i>P/T employed seeking F/T job</i>	26	5.1	14	3.0	5	6.3	2	3.4	21	4.9	12	2.9	94	3.9	37	1.6
<i>Unemployed seeking F/T job</i>	32	6.3	17	3.6	9	11.4	3	5.2	23	5.3	14	3.4	157	6.6	53	2.3
<i>Further studies</i>	75	14.7	60	12.7	19	24.1	12	20.7	56	13.0	48	11.6	413	17.3	339	14.9
<i>Emigration/home country</i>	3	0.6	2	0.4	1	1.3	1	1.7	2	0.5	1	0.2	3	0.1	4	0.2
<i>Not seeking F/T job</i>	7	1.4	5	1.1	0	0	1	1.7	7	1.6	4	1.0	15	0.6	10	0.4

Table 1. Employment situation

* HKU overall refers to the figure for the total HKU population and includes M.B.,B.S. and B.D.S. graduates.

Where did the 1998 B.A. graduates go ?

III. Further Studies

Of the seventy-five graduates who pursued further studies, most of them were enrolled in local tertiary institutions while twenty-one graduates studied abroad in U.K., Japan, U.S.A. and Australia. Table 2 shows the academic programmes pursued & Table 3 shows the source of finance.

Fields of Study	Academic programmes					
	M.Phil.	Master (Coursework)	Postgraduate Certificate	Bachelor's Degree	Adv.Diploma/ Diploma	Others
Arts	18	18			1	
Social Sciences	2	1				
Music	2					
Science	1					
Urban Planning/Studies		5				
Business Administration/ Management		3				
Education		1	18			
Architecture		1				
International Studies		1				
Law				1		
Others						1

No Response = 1

Table 2. Academic programmes

Source of Finance	No. of Graduates
Own Funds	38
Teaching Assistantship/Studentship	20
Full Scholarship	5
Scholarship & Own Funds	1
Government Grant & Loan	10

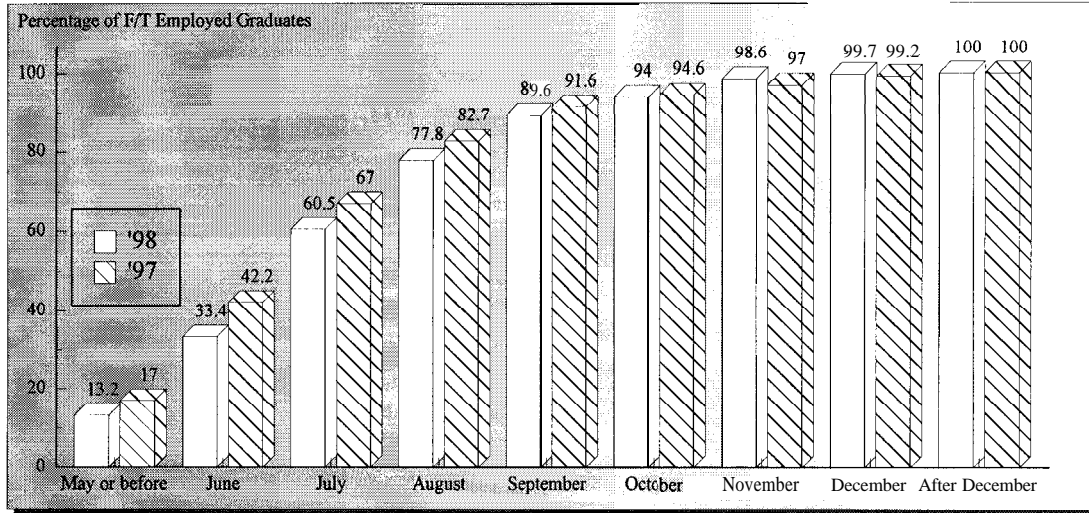
No Response = 1

Table 3. Source of finance for further studies

Where did the 1998 B.A. graduates go ?

IV. Time Taken to Secure Employment

Among those graduates who were in full-time employment, 90% secured their first job offer before the end of September. The figure increased to 100% after December 1998. (Figure 1)

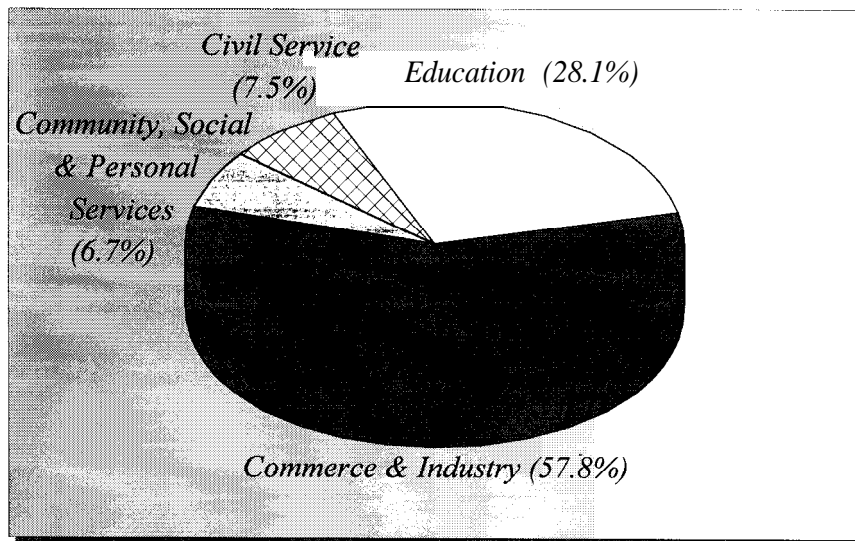


No Response = 1

Figure 1. Time taken to secure employment

V. Employment Sectors

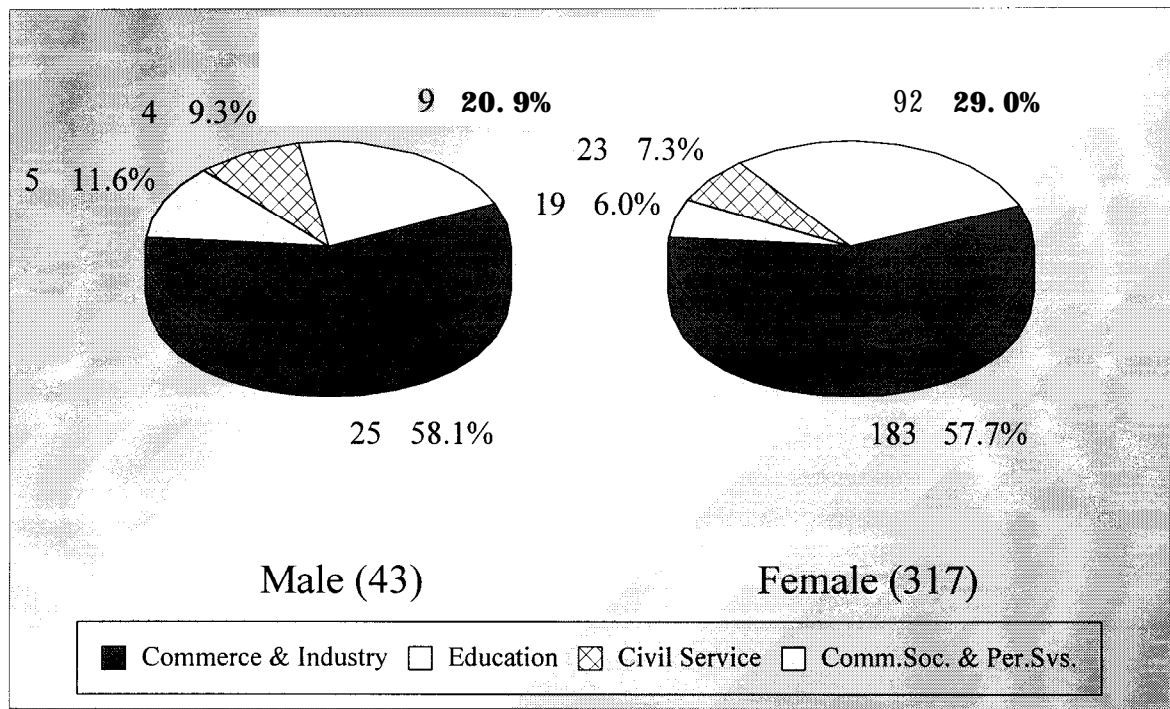
58% (or 208 graduates) of the B.A. graduates were employed in commerce & industry, followed by 28% (or 101 graduates) in the education sector and 7.5% (or 27 graduates) in the civil service. The remaining 6.7% (or 24 graduates) joined the community, social & personal services. (Figures 2 & 3)



No Response = 6

Figure 2. Employment sectors

Where did the 1998 B.A. graduates go ?



No Response = 6

Figure 3. Employment sectors by sex

VI. Basic Salary and Gross Income

The remuneration received by the B.A. graduates is shown in Table 4.

	Basic Salary				Gross Income			
	B.A.		HKU Average*		B.A.		HKU Average*	
	'98	'97	'98	'97	'98	'97	'98	'97
Mean	\$13,390	\$13,920	\$15,496	\$15,749	\$14,315	\$15,115	\$16,557	\$17,552
Median	\$10,025	\$11,500	\$12,300	\$12,500	\$12,000	\$13,515	\$13,325	\$14,521
Minimum	\$1,000	\$4,400	\$1,000	\$4,400	\$6,000	\$5,000	\$5,000	\$5,000
Maximum	\$35,285	\$33,355	\$58,000	\$59,000	\$35,750	\$40,000	\$59,000	\$74,000

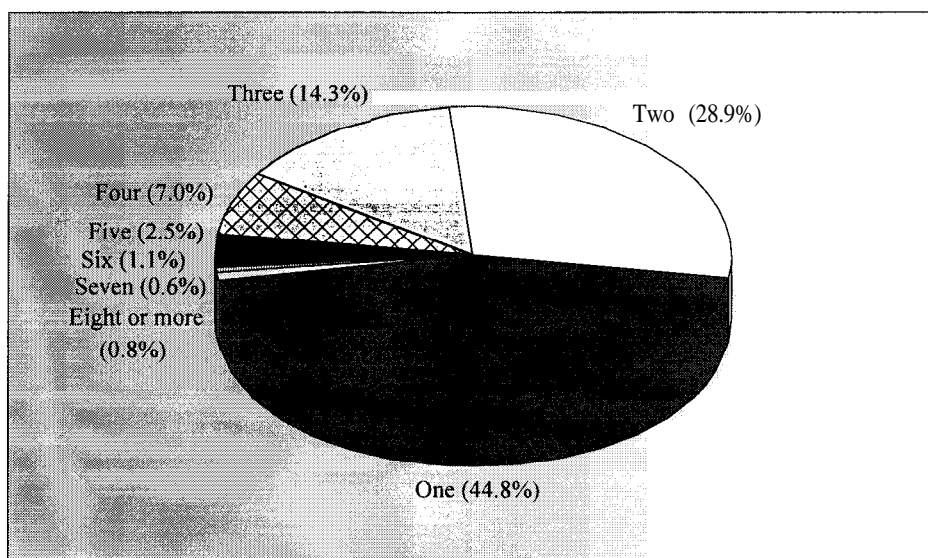
Table 4. Basic salary and gross income

* HKU average refers to the figure for the total HKU population and includes M.B.,B.S. and B.D.S. graduates.

Where did the 1998 B.A. graduates go ?

VII. Number of Full-Time Job Offers

Of those in full-time employment, 55% had more than one job offer. 26% reported having received three to eight or more job offers. On average, each graduate received 2.0 job offers. (Figure 4)



No Response = 9

Figure 4. No. of full-time job offers

VIII. Names of Employers and Job Titles

The job titles of the B.A. graduates in full-time employment and the names of their employers are listed below.

<u>Employers :</u>	<u>Job Titles :</u>
CIVIL SERVICE -	
• HKSAR	• Administrative Officer
• HKSAR - Agriculture & Fisheries Department	• Executive Officer
• HKSAR - Civil Aviation Department	• Air Traffic Flight Services Officer
• HKSAR - Civil Engineering Department	• Chinese Language Officer
• HKSAR - Civil Service Bureau	• Executive Officer
• HKSAR - Education Department	• Assistant Education Officer
• HKSAR - Education Department	• Assistant Education Officer
• HKSAR - Environmental Protection Department	• Executive Officer
• HKSAR - General Grade Office	• Executive Officer
• HKSAR - Government Supplies Department	• Casual Worker
• HKSAR - Home Affairs Department	• Executive Officer
• HKSAR - Immigration Department	• Immigration Officer
• HKSAR - Immigration Department	• Immigration Officer
• HKSAR - Information Services Department	• Assistant Information Officer
• HKSAR - Labour Department	• Assistant Clerical Officer
• HKSAR - Labour Department	• Assistant Labour Officer
• HKSAR - Labour Department	• Assistant Labour Officer

Where did the 1998 B.A. graduates go ?

• HKSAR - Labour Department	• Assistant Labour Officer
• HKSAR - Labour Department	• Assistant Labour Officer
• HKSAR - Lands Department	• Chinese Language Officer
• HKSAR - Office of the Telecommunications Authority	• Administrative Officer
• HKSAR - Official Languages Agency	• Chinese Language Officer
• HKSAR - Official Languages Agency	• Chinese Language Officer
• HKSAR - Official Languages Agency	• Chinese Language Officer
• HKSAR - Official Languages Agency	• Chinese Language Officer
• HKSAR - Regional Services Council	• Executive Officer
• HKSAR - Student Financial Assistance Agency	• Executive Officer

EDUCATION -

• Beacon College	• Graduate Master
• Buddhist Hung Sean Chau Memorial College	• Certificate Master
• Buddhist Tai Hung College	• Graduate Master
• Canossa College	• Graduate Master
• Caritas	• Graduate Master
• Caritas Institute for Further & Adult Education	• Graduate Master
• Caritas St Joseph's Institute for Further & Adult Education	• Programme Officer
• Carmel Holy Word Secondary School	• Graduate Master
• CCC Pan Lee Lai Fun Memorial Secondary School	• Certificate Master
• Choi Hung Estate Catholic Secondary School	• Supply Teacher
• City College	• Tutor
• City University of Hong Kong	• Research Assistant
• Clementi Secondary School	• Assistant Education Officer
• Cognito College	• Graduate Master
• Columbia International College	• Education Consultant
• Cotton Spinners Association Prevocational School	• Graduate Master
• Delia Group of Schools	• Certificate Master
• Delia Memorial School	• Graduate Master
• Diocesan Boys' School	• Certificate Master
• Discovery Bay International School	• Certificate Master
• Farm Road Government Primary School	• Certificate Master
• Fresh Fish Trader's School	• Certificate Master
• Glenn Language & Commercial College	• Tutor Assistant
• HK Buddhist College	• Tutor
• HK College of Management	• Tutor
• HK True Light College	• Graduate Master
• HKCWC Fung Yiu King Memorial Secondary School	• Graduate Master
• HKTA The Yuen Yuen Institute No.3 Secondary School	• Graduate Master
• Hogn Kong Baptist University	• Research Assistant
• Holy Carpenter Prevocational School	• Graduate Master
• Jockey Club Ti-I College	• Certificate Master
• Kiangsu-Chekiang College	• Certificate Master
• Kowloon Tong Secondary School	• Graduate Master
• Lingnan Primary School	• Certificate Master
• LST Ku Chiu Man Secondary School	• Certificate Master
• LST Leung Chik Wai Memorial School	• Graduate Master
• LST Leung Kan Kui Primary School	• Certificate Master
• Ma On Shan Tsung Tsin Secondary School	• Supply Teacher
• Marden Foundation Caritas Prevocational School	• Graduate Master
• Methodist Church HK Wesley College	• Certificate Master

Where did the 1998 B.A. graduates go ?

• Mong Kok Workers' Children School	• Graduate Master
• New Method College	• Graduate Master
• NT Heung Yee Kuk Yuen Long District School	• Graduate Master
• Our Lady's College	• Graduate Master
• Pentecostal School	• Graduate Master
• Po Chiu College	• Graduate Master
• Po Kok Girl's Middle School	• Graduate Master
• PLK Ma Kam Ming College	• Graduate Master
• PLK Secondary School	• Graduate Master
• PLK Tang Yuk Tien College	• Graduate Master
• PLK Tin Ka Ping Primary School	• Certificate Master
• Pok Oi Hospital Chan Kwok Wai Primary School	• Certificate Master
• Precious Blood Secondary School	• Graduate Master
• Raimondi College	• Graduate Master
• Raimondi College	• Graduate Master
• San Kung Hui Yan Laap Primary School	• Certificate Master
• Saviour Lutheran School	• Music Teacher
• Shap Pat Heung Rural Committee Kung Yik She Secondary School	• Graduate Master
• Shi Hui Wen Secondary School	• Graduate Master
• Shun Lee Catholic Secondary School	• Graduate Master
• Shung Tak Catholic English College	• Graduate Master
• SKH Leung Kwai Yee Secondary School	• Graduate Master
• SKH Tsang Shiu Tim Secondary School	• Graduate Master
• St Gloria College	• Graduate Master
• St Gloria College	• Graduate Master
• St Gloria College	• Graduate Master
• St Mary's Canossian School	• Certificate Master
• St Paul's Convent School	• Senior Librarian
• St Peter's Secondary School	• Graduate Master
• St Peter's Secondary School	• Graduate Master
• St Stephen Girl's College	• Graduate Master
• STFA Cheng Yu Tung Secondary School	• Graduate Master
• STFA Leung Kit Wah Primary School	• Certificate Master
• Tai Kok Tsui Catholic Primary School	• Certificate Master
• The Chinese University of Hong Kong	• Programme Assistant
• The Chinese University of Hong Kong	• Research Assistant
• The University of Hong Kong	• Clerk
• The University of Hong Kong	• Clerk
• TKDS Fong Shu Chuen School	• Certificate Master
• True Light Middle School of HK	• Certificate Master
• Tung Wah Group of Hospitals	• Graduate Master
• TWGHs HK & Kowloon Electrical Appliance Primary School	• Certificate Master
• TWGHs Kwan Fong Kai Chi School	• Graduate Master
• TWGHs Lee Ching Dea Memorial College	• Certificate Master
• TWGHs Mrs Wu York Yu Memorial College	• Graduate Master
• TWGHs Wong Fut Nam College	• Graduate Master
• TWGHs Wong Tee Tar Tat Memorial School	• Certificate Master
• Valtorta College	• Graduate Master
• Wellington College	• Certificate Master
• Wong Shiu Chi Middle School	• Certificate Master
• YCH Tung Chi Ying Memorial Secondary School	• Certificate Master
• Yenching College	• Graduate Master
• YPICA Lee Lim Ming College	• Certificate Master
• Organization's name not reported	• Certificate Master

Where did the 1998 B.A. graduates go ?

- | | |
|------------------------------------|----------------------|
| • Organization's name not reported | • Certificate Master |
| • Organization's name not reported | • Certificate Master |
| • Organization's name not reported | • Certificate Master |
| • Organization's name not reported | • Graduate Master |
| • Organization's name not reported | • Graduate Master |
| • Organization's name not reported | • Graduate Master |
| • Organization's name not reported | • Graduate Master |

COMMUNITY, SOCIAL & PERSONAL SERVICES -

- | | |
|---------------------------------------------------|-----------------------------------|
| • Albert Ho Chun Yan's Office | • Case Worker |
| • Brilliant Educational Centre | • Primary/Secondary Tutor |
| • Brilliant Learning Centre | • Tutor |
| • British Council | • Programme Officer |
| • Campus Crusade for Christ | • Trainee Staff |
| • District Councillor Office | • Personal Assistant |
| • Hans Andersen Club Diana Boyd Wilson Centre | • Welfare Worker |
| • HK Arts Festival Society | • Editorial Assistant |
| • HK Arts Festival Society | • Education Programme Assistant |
| • HK Arts Festival Society | • Ticketing Assistant |
| • HK Children & Youth Services | • Administrative Assistant |
| • Hong Kong Tourist Association | • Airport Information Assistant |
| • Hong Kong Tourist Association | • Research Interviewer |
| • Hong Kong Tourist Association | • Research Interviewer |
| • Hospital Authority | • Student Nurse |
| • International Association of Theatre Critics | • Programme Assistant |
| • Modern Educational Research Society Ltd | • Assistant Editor |
| • Office of Chan Choi Hi | • Councillor's Personal Assistant |
| • Secret Garden Music Production | • Composer |
| • Suen Mei Speech & Hearing Centre for the Deaf | • Administrative Assistant |
| • The Hong Kong Football Association | • Sports Executive |
| • The United Institute of International Education | • Administration Assistant |
| • Organization's name not reported | • Administrative Assistant |
| • Organization's name not reported | • Tutor |

COMMERCE & INDUSTRY -

- | | |
|-----------------------------------------------|----------------------------------------|
| • Airport Authority HK | • Airport Guide |
| • Airport Shuttle Bus Service Ltd | • Liaison Officer |
| • Aiwa International Ltd | • Parts Coordinator |
| • Aiwa International Ltd | • Parts Coordinator |
| • American International Assurance Co Ltd | • Financial Planner |
| • American International Assurance Co Ltd | • Financial Planner |
| • Ammirati Puris Lintas | • Information Technology Administrator |
| • Amos Ltd | • Product Associate |
| • Apollo International Freight Forwarders Ltd | • Sales Executive |
| • Asahi Broadcasting Corporation | • Reporter |
| • Asian Sources Publishing Co | • Copywriter |
| • Asian Sources Publishing Co | • Data Research Executive |
| • Associated Medical Surprise Co Ltd | • Marketing Assistant |
| • Associated Merchandising Corporation | • Associate Merchandiser Trainee |
| • ATL Computer System Co Ltd | • System Consultant |
| • BMG Zomba Production Music Asia Ltd | • Publishing Assistant |
| • Body Creation Lingerie Ltd | • Personal Secretary |
| • But-will Holdings Ltd | • Secretary |
| • Campbell's Soup (Asia) Ltd | • Retail Trainee |

Where did the 1998 B.A. graduates go ?

- | | |
|------------------------------------------------|----------------------------------------|
| • Capstone Enterprise | • Assistant Editor |
| • CASH | • Licensing Officer |
| • Cathay Pacific Airways Ltd | • Customer Services Officer |
| • Cathay Pacific Airways Ltd | • Customer Services Officer |
| • Cathay Pacific Airways Ltd | • Customer Services Officer |
| • Chartersince Realty International Ltd | • Account Officer |
| • Che San Stationery Co Ltd | • Officer |
| • Chee Fat Industrial Co | • Marketing Executive |
| • Chinese Television Network | • Programme Director |
| • Chow Hoi Tang Cultural Enterprise | • Marketing Executive |
| • CIL Decoration Co Ltd | • Account Executive |
| • Citibank NA | • Officer |
| • City Telecom (HK) Ltd | • Customer Services Executive |
| • City Telecom (HK) Ltd | • Customer Services Executive |
| • City Telecom (HK) Ltd | • Marketing Trainee |
| • Classroom Publications Ltd | • Assistant Editor |
| • Classroom Publications Ltd | • Editor |
| • Computer Associates International | • Global Sales Support Specialist |
| • Co-op Travel (HK) Ltd | • Assistant Marketing Manager |
| • Creative Publishing Co Ltd | • Editor |
| • Creativecell Interior Design Ltd | • Marketing Executive |
| • D & S Distribution | • Sale Coordinator |
| • Diana (HK) Co Ltd | • Assistant Body Shaping Counsellor |
| • Diana (HK) Co Ltd | • Personal Assistant |
| • Disney Store | • Management Trainee |
| • Dor Fook Co Ltd | • Clerk |
| • Double Rice Development Ltd | • Marketing Executive |
| • Douceur Fashions Ltd | • Assistant Merchandiser |
| • Dynasty (Holdings) Property Agency Ltd | • Clerk |
| • Easy Finder Ltd | • Copywriter |
| • Everbest Building Material Co Ltd | • Sales Executive |
| • Expeditors (HK) Ltd | • Operation Assistant |
| • FA Kee Hardware Retail | • Sales Executive |
| • Far Eastern Economic Review | • Photo Librarian |
| • FCS Interior Design & Contracting Co | • Marketing Executive |
| • First Choice Handbags Manufacturing Ltd | • Personal Assistant |
| • First Pacific Davies Property Management Ltd | • Property Officer |
| • Fleishman-Hillard HK | • Account Executive |
| • Fong On Construction & Engineering Co Ltd | • Personal Assistant |
| • Freetron (Far East) Co Ltd | • Administrative & Personnel Executive |
| • Frocks Ltd | • Stylist/Sales Executive |
| • Fuji TV Network Inc | • Assistant Reporter |
| • Gale Well Ltd | • Leasing Officer |
| • Geologistics Ltd | • Administrative Officer |
| • GFL (HK) Ltd | • Marketing Officer |
| • Giordano Ltd | • Management Trainee |
| • Golden Silver Industries Ltd | • Sales Assistant |
| • Grammy Asia Executive Search | • Administrator |
| • Grand Hotel Group | • Secretary |
| • Great Kingdom Co Ltd | • Customer Services Officer |
| • Group Sense Ltd | • Project Assistant |
| • Hablo Co Ltd | • Merchandiser Assistant |
| • Hanzawa Co Ltd | • Research & Development Assistant |
| • Heller Ehrman White & McAuliffe | • Trainee |
| • Hip Fung Electronics Co Ltd | • Marketing Executive |
| • Hitachi Ferrite Electronics Ltd | • Sales Assistant |

Where did the 1998 B.A. graduates go ?

• HK Asia Exhibition Co Ltd	• Project Executive
• Ho Wang SPB Transportation Consultant Ltd	• Graduate Transport Planner
• Holiday World Tour Co Ltd	• Executive Trainee
• Hong Kong Daily News	• Reporter
• Hong Kong Dragon Airlines Ltd	• Management Trainee
• Hong Kong Sales (Knitwear) Ltd	• Assistant Merchandiser
• Hong Kong Sales (Knitwear) Ltd	• Assistant Merchandiser
• Hong Kong Sales (Knitwear) Ltd	• Assistant Merchandiser
• Hong Kong Sales (Knitwear) Ltd	• Assistant Merchandiser
• Hong Kong Sales (Knitwear) Ltd	• Assistant Merchandiser
• Hong Kong Securities Clearing Co Ltd	• Assistant Customer Services Manager
• Hong Kong Telecom	• Account Executive
• Hong Kong Telecom	• Customer Services Officer
• Hong Kong Telecom I M S Ltd	• Customer Services Representative
• HongkongBank	• Counter Services Officer
• HongkongBank	• Counter Services Officer
• Izumi Manufacturing Ltd	• Officer Trainee
• Japanese Co	• Sales Coordinator
• Jovian Financial Communications Ltd	• Account Executive
• Jovian Financial Communications Ltd	• Account Executive
• KCFok & Co	• Secretary
• Kabgartic Co Ltd	• Secretary
• Kada Watch Enterprise	• Personal Assistant
• Keen Lloyd Holdings Ltd	• Secretary
• Kwan Kin Tourist Co Ltd	• Escort Guide
• Kwong Hing Umbrella (HK) Co Ltd	• Assistant Merchandiser
• Laffin Industrial Ltd	• Assistant Merchandiser
• Land Resources (China) Co Ltd	• Marketing & Customer Relation Assistant
• Leejin Button (HK) Co Ltd	• Personal Assistant
• Li & Fung Trading Ltd	• Shipping clerk
• Lil Decorative Ltd	• Key Account Executive
• Linkage Online Ltd	• Management Trainee
• Lippo Protective Life Insurance Co Ltd	• Assistant Officer
• LLA Consultancy Ltd	• Assistant Transport Planner
• Long Win Bus Co Ltd	• Assistant Executive
• LST Luthansa Services (Asia) Ltd	• Administrative Assistant
• Luen Thai International Group Ltd	• Shipping Clerk
• Maersk (HK) Ltd	• Trainee
• Marks & Spencer	• Management Trainee
• Martex Trading	• Assistant Merchandiser
• McDonald's Restaurant	• Manager Trainee
• Media Watches Ltd	• Interpreter
• Meecon Erickson	• Account Executive
• Metro Broadcasting	• Creative Copywriter
• MGB Industrial Co Ltd	• Assistant Merchandiser
• Midori Mark (HK) Ltd	• Marketing Assistant
• Miracle Handbag Manufacturing Ltd	• Executive Secretary
• Mirama Travel Agent	• Tourist Escort
• Mitsubishi Rayon	• Administrative Clerk
• Multi-Gold Air & Sea Express Ltd	• Management Assistant
• MVA (HK) Ltd	• Graduate Transport Planner
• National Resources Petroleum Ltd	• Personal Assistant
• Neon King Ltd	• Marketing Assistant
• New Dawn Promotions	• Account Executive
• New World First Bus Services Ltd	• Public Affairs Assistant
• Nissin Transportation & Warehousing (HK) Ltd	• Sales Executive

Where did the 1998 B.A. graduates go ?

› Nokia (HK) Ltd	• Human Resources Assistant
› Onflo International Co Ltd	• Administrative Assistant
› Orient Overseas Container Line Ltd	• Operations Assistant
› Oriental Daily Groups	• Reporter
› Oriental Press Group	• Editor
› Pace Publishing Ltd	• Assistant Editor
› Paul W Tse Solicitors	• Conveyancing Clerk
› Plaza Premium Lounge	• Marketing Executive
› Poly Glot Translation Co Ltd	• Translation Coordinator
› PowerNet Internet Group	• Website Designer
› Prudential Assurance Co Ltd	• Insurance Consultant
› Prudential Assurance Co Ltd	• Insurance Consultant
› QPL Ltd	• Interpreter
› Qualipak Manufacturing Ltd	• Marketing Executive
› Raymond Industrial Ltd	• Liaison Officer
› Red Boxes	• Secretary
› Review Publishing Co Ltd	• Proof-reader
› Right Point (HK) Ltd	• Administration Assistant
› Rising Precision Products Ltd	• Marketing Executive
› Rohm Hong Kong Electronic	• Marketing Assistant
› Sagem SA	• Executive Secretary
› Schenker International (HK) Ltd	• Operation Clerk
› Scott Wilson (HK) Ltd	• Assistant Project Coordinator
› Scott Wilson (HK) Ltd	• Assistant Project Coordinator
› Shell (HK) Co Ltd	• Clerk
› Shun Hing Power & Transmission Equipment Co Ltd	• Sales Coordinator
› Simatelex Manufactory Co Ltd	• Assistant Sales Executive
› Simon Marketing Co Ltd	• Marketing Assistant
› Sit, Fung, Kwong & Shum Solicitor	• Executive Secretary
› Silk (HK) Co Ltd	• Administrative Clerk
› So, Keung, Yip & Sin Solicitors	• Secretary
› Sony International (HK) Ltd	• Legal Office Coordinator
› Stanford House	• Administrative Assistant
› Sun Times Publishing Ltd	• Assistant Editor
› System Media Ltd	• Secretary
› Tai Tin Amusement Ltd	• Secretary
› TBWA HK	• Account Executive
› TDK (HK) Corporation Ltd	• Sales Executive
› TDK (HK) Corporation Ltd	• Sales Executive
› The Carlyle Group	• Executive Assistant
› The Roch House Publisher Ltd	• Editorial Assistant
› The Sun	• Reporter
› The Tibetan Gallery	• Management/Operation Trainee
› Thomas Chan Designs Ltd	• Project Manager
› Thomas Cook	• Customer Service Representative
› Thorn Security (HK) Ltd	• Secretary
› Threebond (HK) Co Ltd	• Sales Engineer
› Tokai Marvman Securities (Asia) Ltd	• Dealing & Administrative Executive
› Toko (HK) Inc	• Personal Assistant
› Tokokosen Corp	• Sales Coordinator
› Top Groy Insuracne (Bermuda) Co Ltd	• Administrative Assistant
› Toray Industries (HK) Ltd	• Sales Executive
› Toray Industries (HK) Ltd	• Sales Trainee
› U.S. Filter/Surface Preparation Group	• Administrative Co-ordinator
› Urban Property Management Ltd	• Community Relation Officer
› Vitality Communications Ltd	• Editorial Assistant

Where did the 1998 B.A. graduates go ?

• Wah Ming Hong	• Purchasing Assistant
• Wah Ming Hong	• Purchasing Assistant
• Wealth Production Co Ltd	• Management Trainee
• Wheatear Co Ltd	• Administrator
• Win Concept Consulting Co Ltd	• Assistant Account Executive
• Winsor Industrial Co Ltd	• Company Secretarial Assistant
• Winterthur Life Insurance Co	• Management Trainee
• Wistar Enterprises Ltd	• Assistant Merchandiser
• World Diamond	• Administration Officer
• Yetyue Ltd	• Clerk
• Organization's name not reported	• Administration Officer
• Organization's name not reported	• Assistant Editor
• Organization's name not reported	• Assistant Merchandiser
• Organization's name not reported	• Assistant Merchandiser
• Organization's name not reported	• Editor Assistant
• Organization's name not reported	• Marketing Executive
• Organization's name not reported	• Property Officer
• Organization's name not reported	• Sales Coordinator
• Organization's name not reported	• Sales Executive
• Organization's name not reported	• Sales Executive Trainee

No Response = 7

Table 5. List of employers and job titles

Note : Some alumni have indicated willingness to talk to individual students about their work. Their contact telephone number can be obtained from counsellors at CEPC.

IX. Similar information on graduates from other disciplines of study are available for reference in the Careers Library. Please enquire with the CEPC.

Careers Education and Placement Centre
3/F Wong Chuang Lai Wah Building
Meng Wah Complex
The University of Hong Kong
Pokfulam Road
Hong Kong

Telephone : 28592314
Fax : 2559 5238
E-Mail : CEPC@HKUCC.HKU.HK
Homepage : <http://www.hku.hk/cepc>

Opening Hours : Monday - Friday (9:00 a.m. to 5:30 p.m.)
Saturday (9:00 a.m. to 12:00 p.m.)

Cindy Chan

July, 1999

The analysis is based on information provided by the respondents, and the Careers Education & Placement Centre should not be held responsible for any errors arising therefrom.

No part of this report may be reproduced in any form or by whatever means,
without written permission from the Director of the Careers Education and Placement Centre,
The University of Hong Kong