

## Where did the 1998 B.A. - Translation graduates go ?

### I. Introduction

The information contained in this paper is extracted from the Graduate Employment Survey of 1998 to answer the following questions about Bachelor of Arts graduates with major in Translation : -

- . How were they employed six months after graduation ?
- . Of those who pursued further studies, what programmes did they follow ?
- Of those who were employed full-time, how long did it take them to secure their first job offer ?
- . In which sectors were they employed ?
- . How much did they receive in salary ?
- . How many job offers did they receive ?
- . Who were their employers and what were their job titles ?

### II. Employment Situation in 1998

Of the 93 respondents who majored in Translation, 82% (or 76 graduates) were in full-time employment within six months of graduation. 8.6% (or 8 graduates) went on for further studies. Another 7.6% (or 7 graduates) were still seeking full-time employment at the time of the survey. (Table 1)

	B.A. - Translation								HKU Overall*							
	Total				Male				Female							
	'98		'97		'98		'97		'98		'97					
	No.	%	No.	%	No.	%	No.	%	No.	%	No.	%				
<i>No. of respondents</i>	93	100	79	100	5	100	4	100	88	100	75	100	2383	100	2272	100
<i>F/T employed</i>	76	81.7	65	82.3	5	100	3	75.0	71	80.7	62	82.7	1701	71.4	1829	80.5
<i>P/T employed seeking F/T job</i>	6	6.5	2	2.5	0	0	0	0	6	6.8	2	2.7	94	3.9	37	1.6
<i>Unemployed seeking F/T job</i>	1	1.1	5	6.3	0	0	0	0	1	1.1	5	6.7	157	6.6	53	2.3
<i>Further studies</i>	8	8.6	6	7.6	0	0	1	25.0	8	9.1	5	6.7	413	17.3	339	14.9
<i>Emigration/home country</i>	1	1.1	0	0	0	0	0	0	1	1.1	0	0	3	0.1	4	0.2
<i>Not seeking F/T job</i>	1	1.1	1	1.3	0	0	0	0	1	1.1	1	1.3	15	0.6	10	0.4

Table 1. Employment situation

\* HKU overall refers to the figure for the total HKU population and includes M.B.,B.S. and B.D.S. graduates.

## Where did the 1998 B.A. - Translation graduates go ?

### III. Further Studies

Eight graduates pursued postgraduate studies. Of these, four studied arts, one took up a master (coursework) programme in urban planning/studies and three enrolled for a postgraduate certificate programme in education. Table 2 shows the academic programmes pursued & Table 3 shows the source of finance.

Fields of Study	Academic Programmes		
	<i>M.Phil.</i>	<i>Master (Coursework)</i>	<i>Postgraduate Certificate</i>
<i>Arts</i>	1	3	
<i>Urban Planning/Studies</i>		1	
<i>Education</i>			3

Table 2. Academic programmes

Source of Finance	No. of Graduates
<i>Own Funds</i>	6
<i>Teaching Assistantship/Studentship</i>	1
<i>Government Grant &amp; Loan</i>	1

Table 3. Source of finance for further studies

### IV. Time Taken to Secure Employment

Among those graduates who were in full-time employment, 83% secured their first job offer before the end of August. The figure increased to 100% after December 1998. (Figure 1)

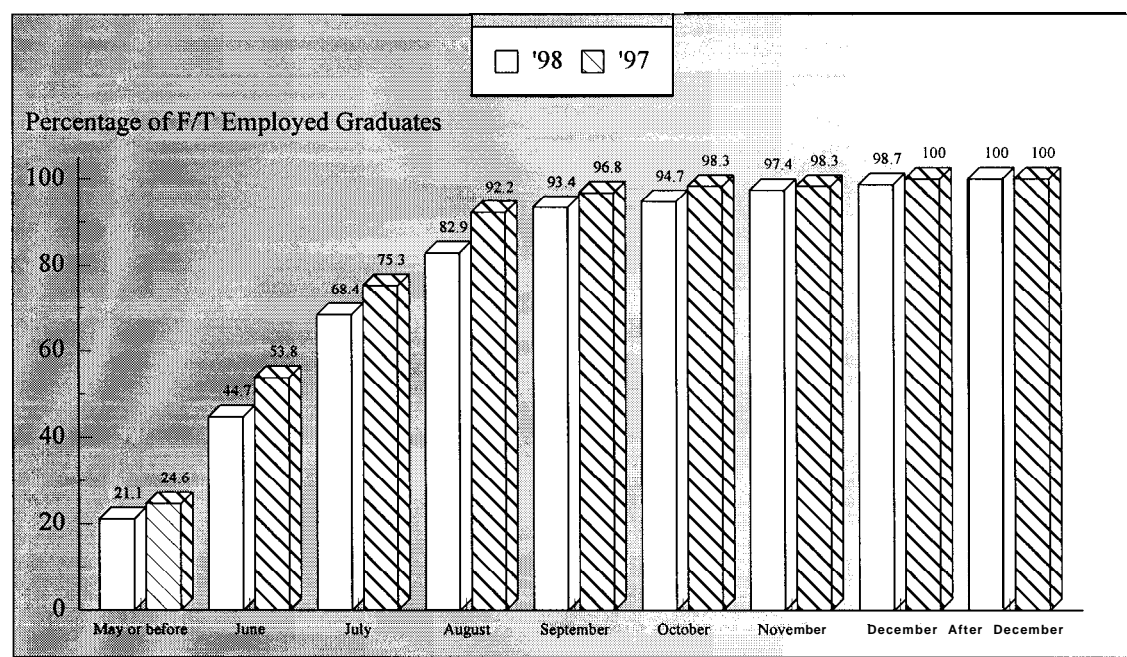
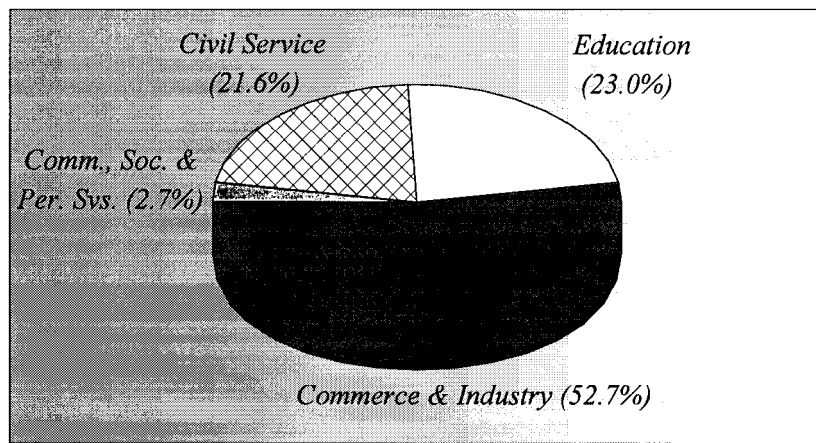


Figure 1. Time taken to secure employment

## Where did the 1998 B.A. - Translation graduates go ?

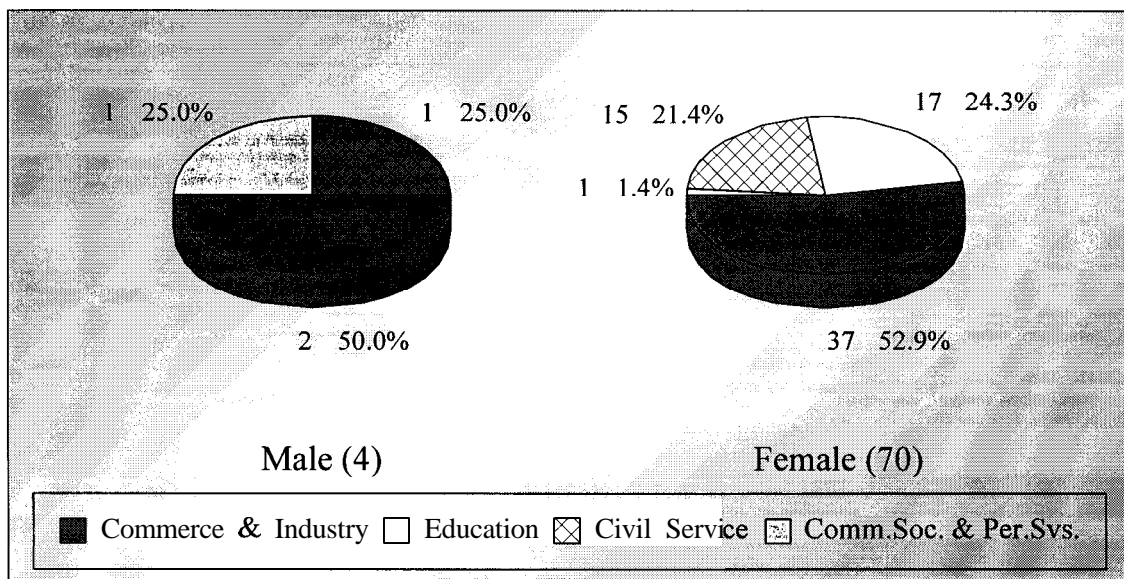
### V. Employment Sectors

53% (or 39 graduates) of the Translation graduates were employed in commerce & industry, followed by 23% (or 17 graduates) in the education and 22% (or 16 graduates) in the civil service. The remaining 2.7% (or 2 graduates) joined the community, social & personal services. (Figures 2 & 3)



No Response = 2

Figure 2. Employment sectors



No Response = 2

Figure 3. Employment sectors by sex

## Where did the 1998 B.A. - Translation graduates go ?

### VI. Basic Salary and Gross Income

The remuneration received by the Translation graduates is shown in Table 4.

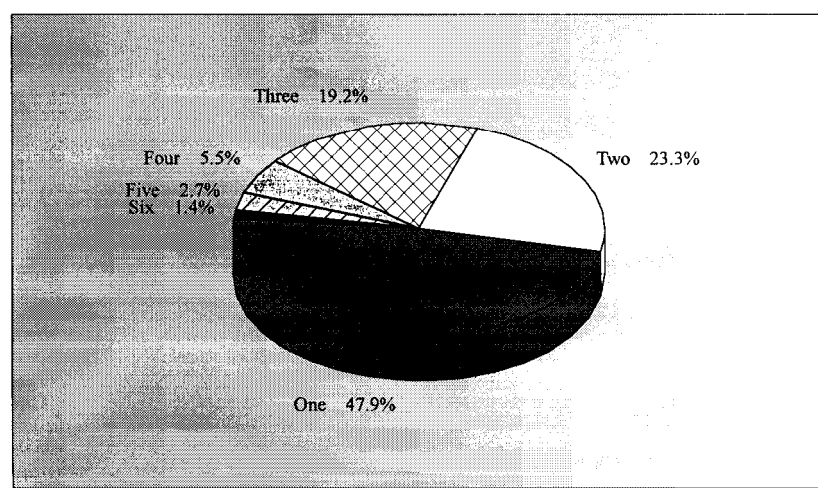
	<i>Basic Salary</i>				<i>Gross Income</i>			
	<b>B.A. - Translation</b>		<b>HKU Average*</b>		<b>B.A. - Translation</b>		<b>HKU Average*</b>	
	'98	'97	'98	'97	'98	'97	'98	'97
<i>Mean</i>	\$14,788	\$15,512	\$15,496	\$15,749	\$15,387	\$16,330	\$16,557	\$17,552
<i>Median</i>	\$12,000	\$15,000	\$12,300	\$12,500	\$12,911	\$16,292	\$13,325	\$14,521
<i>Minimum</i>	\$6,000	\$7,000	\$1,000	\$4,400	\$6,000	\$9,245	\$5,000	\$5,000
<i>Maximum</i>	\$35,285	\$28,910	\$58,000	\$59,000	\$35,285	\$28,910	\$59,000	\$74,000

Table 4. Basic salary and gross income

\* HKU average refers to the figure for the total HKU population and includes M.B., B.S. and B.D.S. graduates.

### VII. Number of Full-Time Job Offers

Of those in full-time employment, 52% of the graduates had more than one job offer. 29% reported having received three to six job offers. (Figure 4)



No Response = 3

Figure 4. No. of full-time job offers

## ***Where did the 1998 B.A. - Translation graduates go ?***

---

### **VIII. Names of Employers and Job Titles**

The job titles of the Translation graduates in full-time employment and the names of their employers are listed below.

<b><u>Employers :</u></b>	<b><u>Job Titles :</u></b>
<b>CIVIL SERVICE -</b>	
· HKSAR - Agriculture & Fisheries Department	· Executive Officer
· HKSAR - Civil Service Bureau	· Executive Officer
· HKSAR - Education Department	· Assistant Education Officer
· HKSAR - General Grade Office	· Executive Officer
· HKSAR - Home Affairs Department	· Executive Officer
· HKSAR - Immigration Department	· Immigration Officer
· HKSAR - Information Services Department	• Assistant Information Officer
· HKSAR - Labour Department	• Assistant Labour Officer
· HKSAR - Labour Department	• Assistant Clerical Officer
· HKSAR - Lands Department	· Chinese Language Officer
· HKSAR - Office of Telecommunications Authority	• Administrative Officer
· HKSAR - Official Languages Agency	· Chinese Language Officer
· HKSAR - Official Languages Agency	· Chinese Language Officer
· HKSAR - Official Languages Agency	· Chinese Language Officer
<b>EDUCATION -</b>	
· Caritas St Joseph's Institute for Further & Adult Education	• Programme Officer
· LST Ku Chiu Man Secondary School	· Certificate Master
· LST Leung Chik Wai Memorial School	· Graduate Master
· Mong Kok Workers' Children School	· Graduate Master
· New Method College	· Graduate Master
· PLK Secondary School	· Graduate Master
· PLK Tang Yuk Tien College	· Graduate Master
· Shun Lee Catholic Secondary School	· Graduate Master
· SKH Leung Kwai Yee Secondary School	· Graduate Master
· St Gloria College	· Graduate Master
· St Gloria College	• Graduate Master
· The Chinese University of Hong Kong	· Research Assistant
· TWGHs Wong Fut Nam College	· Graduate Master
· Valtorta College	· Graduate Master
· YCH Tung Chi Ying Memorial Secondary School	• Certificate Master
· Organization's name not reported	· Graduate Master
<b>COMMUNITY, SOCIAL &amp; PERSONAL SERVICES -</b>	
· HK Children & Youth Services	· Administrative Assistant
<b>COMMERCE &amp; INDUSTRY -</b>	
· Ammirati Puris Lintas	· Information Technology Administrator
· Associated Merchandising Corporation	· Associate Merchandiser Trainee
· ATL Computer System Co Ltd	· System Consultant

## *Where did the 1998 B.A. - Translation graduates go ?*

• Burwill Holdings Ltd	. Secretary
• Chow Hoi Tang Cultural Enterprise	. Marketing Executive
. Classroom Publications Ltd	. Assistant Editor
• Computer Associates International	. Global Sales Support Specialist
. Co-op Travel (HK) Ltd	. Assistant Marketing Manager
. FCS Interior Design & Contracting Co	. Marketing Executive
. First Choice Handbags Manufacturing Ltd	. Personal Assistant
. Fleishman-Hillard HK	. Account Executive
. Group Sense Ltd	. Project Assistant
. Heller Ehrman White & McAuliffe	. Trainee
. HK Asia Exhibition Co Ltd	. Project Executive
. Holiday World Tour Co Ltd	• Executive Trainee
. Hong Kong Dragon Airlines Ltd	. Management Trainee
. Hong Kong Sales (Knitwear) Ltd	. Assistant Merchandiser
. Hong Kong Telecom	. Customer Services Officer
. Jovian Financial Communications Ltd	. Account Executive
. Jovian Financial Communications Ltd	. Account Executive
. Kada Watch Enterprise	. Personal Assistant
. Lippo Protective Life Insurance Co Ltd	• Assistant Officer
. Maersk (HK) Ltd	. Trainee
. Media Watches Ltd	. Interpreter
. Pace Publishing Ltd	• Assistant Editor
. PowerNet Internet Group	. Website Designer

No Response = 5

*Table 5. List of employers and job titles*

Note: Some alumni have indicated willingness to talk to individual students about their work. Their contact telephone number can be obtained from counsellors at CEPC.

## *Where did the 1998 B.A. - Translation graduates go ?*

---

- IX.** Similar information on graduates from other disciplines of study is available for reference in the Careers Library. Please enquire with the CEPC.

Careers Education and Placement Centre  
3/F Wong Chuang Lai Wah Building  
Meng Wah Complex  
The University of Hong Kong  
Pokfulam Road  
Hong Kong

Telephone : 28592314  
Fax : 2559 5238  
E-Mail : [CEPC@HKUCC.HKU.HK](mailto:CEPC@HKUCC.HKU.HK)  
Homepage : <http://www.hku.hk/cepc>

Opening Hours : Monday - Friday (9:00 a.m. to 5:30 p.m.)  
Saturday (9:00 a.m. to 12:00 p.m.)

Cindy Chan

August, 1999

The analysis is based on information provided by the respondents, and the Careers Education & Placement Centre should not be held responsible for any errors arising therefrom.

No part of this report may be reproduced in any form or by whatever means,  
without written permission from the Director of the Careers Education and Placement Centre,  
The University of Hong Kong