

# Where did the 1998 B.A. - Japanese Studies graduates go ?

## I. Introduction

The information contained in this paper is extracted from the Graduate Employment Survey of 1998 to answer the following questions about Bachelor of Arts graduates with major in Japanese Studies :-

- How were they employed six months after graduation ?
- Of those who pursued further studies, what programmes did they follow ?
- Of those who were employed full-time, how long did it take them to secure their first job offer ?
- In which sectors were they employed ?
- How much did they receive in salary ?
- How many job offers did they receive ?
- Who were their employers and what were their job titles ?

## II. Employment Situation in 1998

Of the 78 respondents who majored in Japanese Studies, 76% (or 59 graduates) were in full-time employment within six months of graduation. 13% (or 10 graduates) went on for further studies. Another 12% (or 9 graduates) were still seeking full-time employment at the time of the survey. (Table 1)

	B.A. - Japanese Studies								HKU Overall*							
	Total				Male				Female							
	'98		'97		'98		'97		'98		'97					
	No.	%	No.	%	No.	%	No.	%	No.	%	No.	%				
<i>No. of respondents</i>	78	100	63	100	12	100	10	100	66	100	53	100	2383	100	2272	100
<i>F/T employed</i>	59	75.6	53	84.1	6	50.0	9	90.0	53	80.3	44	83.0	1701	71.4	1829	80.5
<i>P/T employed seeking F/T job</i>	4	5.1	2	3.2	2	16.7	0	0	2	3.0	2	3.8	94	3.9	37	1.6
<i>Unemployed seeking F/T job</i>	5	6.4	2	3.2	2	16.7	0	0	3	4.5	2	3.8	157	6.6	53	2.3
<i>Further studies</i>	10	12.8	6	9.5	2	16.7	1	10.0	8	12.1	5	9.4	413	17.3	339	14.9
<i>Emigration/home country</i>	0	0	0	0	0	0	0	0	0	0	0	0	3	0.1	4	0.2
<i>Not seeking F/T job</i>	0	0	0	0	0	0	0	0	0	0	0	0	15	0.6	10	0.4

Table 1. Employment situation

\* HKU overall refers to the figure for the total HKU population and includes M.B.,B.S. and B.D.S. graduates.

## Where did the 1998 B.A. - Japanese Studies graduates go ?

### III. Further Studies

Of the ten graduates who pursued postgraduate studies, five took up a master (coursework) programme in the same discipline as their first degree while one graduate each studied business administration/management and urban planning/studies. Table 2 shows the academic programmes pursued & Table 3 shows the source of finance.

Fields of Study	Academic Programmes		
	Master (Coursework)	Adv. Diploma/ Diploma	Others
Arts	5	1	
Business Administration/Management	1		
Urban Planning/Studies	1		
Others			1

No Response = 1

Table 2. Academic programmes

Source of Finance	No. of Graduates
Own Funds	5
Full Scholarship	3
Scholarship & Own Funds	1
Government Grant & Loan	1

Table 3. Source of finance for further studies

### IV. Time Taken to Secure Employment

Among those graduates who were in full-time employment, 80% secured their first job offer before the end of August. The figure increased to 100% by the end of November. (Figure 1)

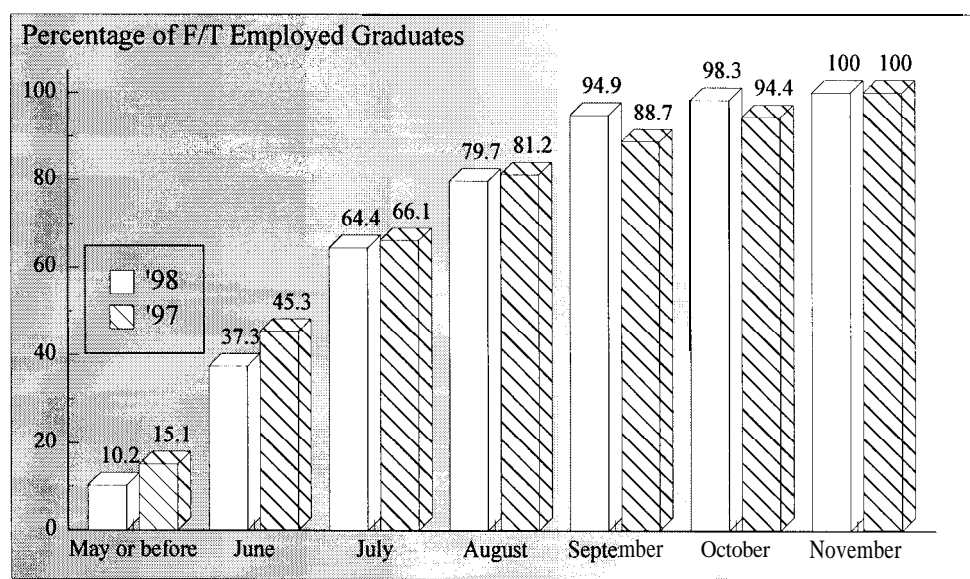


Figure 1. Time taken to secure employment

# Where did the 1998 B.A. - Japanese Studies graduates go ?

## V. Employment Sectors

Most (86% or 51 graduates) of the Japanese Studies graduates were employed in commerce & industry, followed by 5.1% (or 3 graduates) each in the civil service and the community, social & personal services. The remaining 3.4% (or 2 graduates) joined the education. (Figures 2 & 3)

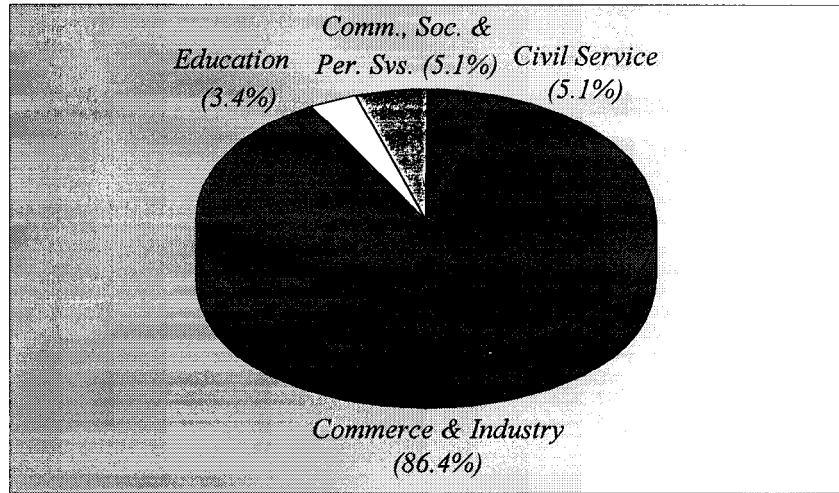


Figure 2. Employment sectors

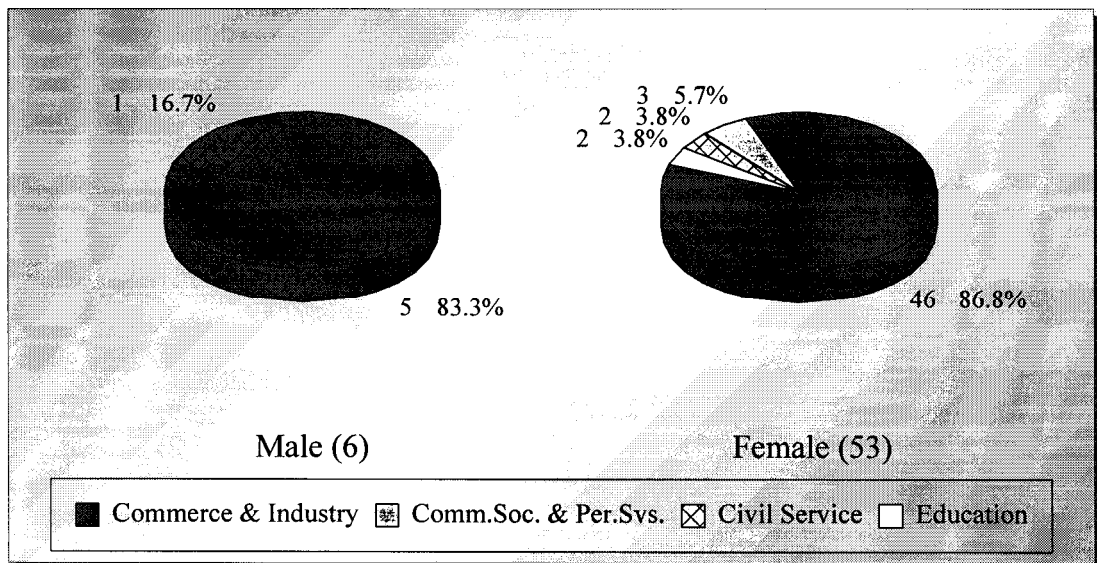


Figure 3. Employment sectors by sex

## Where did the 1998 B.A. - Japanese Studies graduates go ?

### VI. Basic Salary and Gross Income

The remuneration received by the Japanese Studies graduates is shown in Table 4.

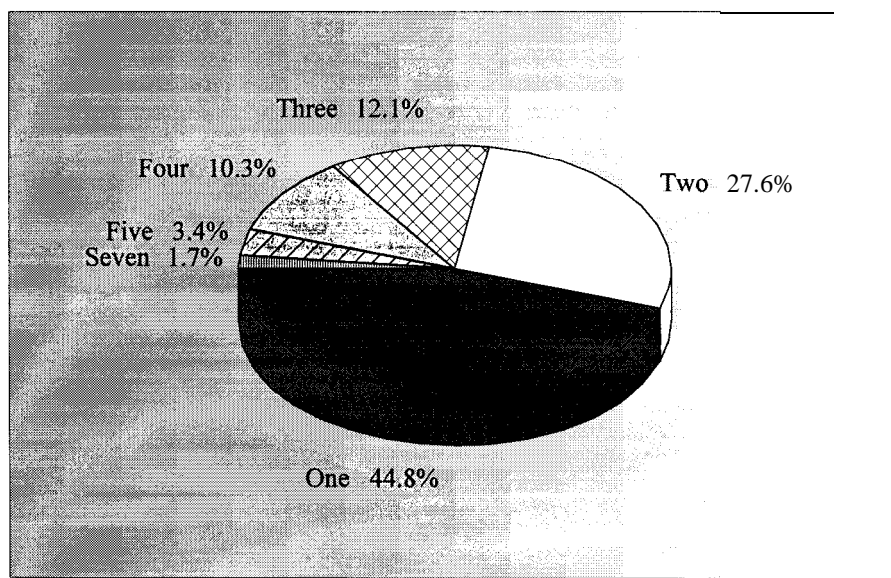
	<i>Basic Salary</i>				<i>Gross Income</i>			
	<b>B.A. - Japanese Studies</b>		<b>HKU Average*</b>		<b>B.A. - Japanese Studies</b>		<b>HKU Average*</b>	
	'98	'97	'98	'97	'98	'97	'98	'97
<i>Mean</i>	\$11,037	\$11,748	15,496	\$15,749	\$12,675	\$14,126	\$16,557	\$17,552
<i>Median</i>	\$10,000	\$11,000	\$12,300	\$12,500	\$11,033	\$13,000	13,325	\$14,521
<i>Minimum</i>	\$8,000	\$4,400	\$1,000	\$4,400	\$8,500	\$8,500	\$5,000	\$5,000
<i>Maximum</i>	\$27,570	\$2,1980	\$58,000	\$59,000	\$27,570	\$3,1333	\$59,000	\$74,000

Table 4. Basic salary and gross income

\* HKU average refers to the figure for the total HKU population and includes M.B.,B.S. and B.D.S. graduates.

### VII. Number of Full-Time Job Offers

Of those in full-time employment, 55% of the graduates had more than one job offer. 28% reported having received three to seven job offers. (Figure 4)



No Response = 1

Figure 4. No offull-time job offers

## ***Where did the 1998 B.A. - Japanese Studies graduates go ?***

---

### **VIII. Names of Employers and Job Titles**

The job titles of the Japanese Studies graduates in full-time employment and the names of their employers are listed below.

<b><u>Employers :</u></b>	<b><u>Job Titles :</u></b>
<b>CIVIL SERVICE -</b>	
<ul style="list-style-type: none"><li>• HKSAR - Immigration Department</li><li>• HKSAR - Labour Department</li><li>• HKSAR - Regional Services Council</li></ul>	<ul style="list-style-type: none"><li>• Immigration Officer</li><li>• Assistant Labour Officer</li><li>• Executive Officer</li></ul>
<b>EDUCATION -</b>	
<ul style="list-style-type: none"><li>• Buddhist Hung Sean Chau Memorial College</li><li>• Organization's name not reported</li></ul>	<ul style="list-style-type: none"><li>• Certificate Master</li><li>• Certificate Master</li></ul>
<b>COMMUNITY, SOCIAL &amp; PERSONAL SERVICES -</b>	
<ul style="list-style-type: none"><li>• Brilliant Education Centre</li><li>• Hong Kong Tourist Association</li><li>• Hong Kong Tourist Association</li></ul>	<ul style="list-style-type: none"><li>• Primary / Secondary Tutor</li><li>• Airport Information Assistant</li><li>• Research Interviewer</li></ul>
<b>COMMERCE &amp; INDUSTRY -</b>	
<ul style="list-style-type: none"><li>• Airport Shuttle Bus Service Ltd</li><li>• Aiwa International Ltd</li><li>• Asahi Broadcasting Corporation</li><li>• Cathay Pacific Airways Ltd</li><li>• City Telecom (HK) Ltd</li><li>• City Telecom (HK) Ltd</li><li>• Creativecell Interior Design Ltd</li><li>• D &amp; S Distribution</li><li>• Diana (HK) Co Ltd</li><li>• Dynasty (Holdings) Property Agency Ltd</li><li>• Far Eastern Economic Review</li><li>• First Pacific Davies Property Management Ltd</li><li>• Fuji TV Network Inc</li><li>• Grammy Asia Executive Search</li><li>• Hanzawa Co Ltd</li><li>• Hip Fung Electronics Co Ltd</li><li>• Hitachi Ferrite Electronics Ltd</li><li>• Hong Kong Sales (Knitwear) Ltd</li><li>• Japanese Co</li><li>• K C F o k &amp; C o</li><li>• Laffin Industrial Ltd</li><li>• Linkage Online Ltd</li><li>• MGB Industrial Co Ltd</li><li>• Midori Mark (HK) Ltd</li><li>• Miracle Handbag Manufacturing Ltd</li><li>• Mitsubishi Rayon</li><li>• National Resources Petroleum Ltd</li></ul>	<ul style="list-style-type: none"><li>• Liaison Officer</li><li>• Parts Coordinator</li><li>• Reporter</li><li>• Customer Services Officer</li><li>• Marketing Trainee</li><li>• Customer Services Executive</li><li>• Marketing Executive</li><li>• Sale Coordinator</li><li>• Personal Assistant</li><li>• Clerk</li><li>• Photo Librarian</li><li>• Property Officer</li><li>• Assistant Reporter</li><li>• Administrator</li><li>• Research &amp; Development Assistant</li><li>• Marketing Executive</li><li>• Sales Assistant</li><li>• Assistant Merchandiser</li><li>• Sales Coordinator</li><li>• Secretary</li><li>• Assistant Merchandiser</li><li>• Management Trainee</li><li>• Assistant Merchandiser</li><li>• Marketing Assistant</li><li>• Executive Secretary</li><li>• Administrative Clerk</li><li>• Personal Assistant</li></ul>

## *Where did the 1998 B.A. - Japanese Studies graduates go ?*

• Nissin Transportation & Warehousing (HK) Ltd	• Sales Executive
• Onflo International Co Ltd	• Administrative Assistant
• Plaza Premium Lounge	• Marketing Executive
• Prudential Assurance Co Ltd	• Insurance Consultant
• Prudential Assurance Co Ltd	• Insurance Consultant
• Rohm Hong Kong Electronic	• Marketing Assistant
• Shun Hing Power & Transmission Equipment Co Ltd	• Sales Coordinator
• Simatelex Manufactory Co Ltd	• Assistant Sales Executive
• Tai Tin Amusement Ltd	• Secretary
• TDK (HK) Corporation Ltd	• Sales Executive
• Threebond (HK) Co Ltd	• Sales Engineer
• Toko (HK) Inc	• Personal Assistant
• Tokokosen Corp	• Sales Coordinator
• US Filter/Surface Preparation Group	• Administrative Coordinator
• Wah Ming Hong	• Purchasing Assistant
• Wistar Enterprises Ltd	• Assistant Merchandiser
• Organization's name not reported	• Administrative Assistant
• Organization's name not reported	• Administrative Officer
• Organization's name not reported	• Assistant Merchandiser
• Organization's name not reported	• Assistant Merchandiser
• Organization's name not reported	• Sales Coordinator
• Organization's name not reported	• Sales Executive Trainee

No Response = 2

*Table 5. List of employers and job titles*

Note: Some alumni have indicated willingness to talk to individual students about their work. Their contact telephone number can be obtained from counsellors at CEPC.

## *Where did the 1998 B.A. - Japanese Studies graduates go ?*

---

- IX.** Similar information on graduates from other disciplines of study is available for reference in the Careers Library. Please enquire with the CEPC.

Careers Education and Placement Centre  
3/F Wong Chuang Lai Wah Building  
Meng Wah Complex  
The University of Hong Kong  
Pokfulam Road  
Hong Kong

Telephone : 28592314  
Fax : 2559 5238  
E-Mail : [CEPC@HKUCC.HKU.HK](mailto:CEPC@HKUCC.HKU.HK)  
Homepage : <http://www.hku.hk/cepc>

Opening Hours : Monday - Friday (9:00 a.m. to 5:30 p.m.)  
Saturday (9:00 a.m. to 12:00 p.m.)

Cindy Chan

September, 1999

The analysis is based on information provided by the respondents, and the Careers Education & Placement Centre should not be held responsible for any errors arising therefrom.

No part of this report may be reproduced in any form or by whatever means,  
without written permission from the Director of the Careers Education and Placement Centre,  
The University of Hong Kong