

Where did the 1998 B.A. - Geography & Geology graduates go ?

I. Introduction

The information contained in this paper is extracted from the Graduate Employment Survey of 1998 to answer the following questions about Bachelor of Arts graduates with major in Geography & Geology : -

- . How were they employed six months after graduation ?
- . Of those who pursued further studies, what programmes did they follow ?
- . Of those who were employed full-time, how long did it take them to secure their first job offer ?
- . In which sectors were they employed ?
- . How much did they receive in salary ?
- . How many job offers did they receive ?
- . Who were their employers and what were their job titles ?

II. Employment Situation in 1998

Of the 52 respondents who majored in Geography & Geology, 54% (or 28 graduates) were in full-time employment within six months of graduation. 29% (or 15 graduates) went on for further studies. Another 15% (or 8 graduates) were still seeking full-time employment at the time of the survey. (Table 1)

	B.A. - Geography & Geology								HKU Overall*							
	Total				Male				Female							
	'98		'97		'98		'97		'98		'97					
	No.	%	No.	%	No.	%	No.	%	No.	%	No.	%				
<i>No. of respondents</i>	52	100	47	100	10	100	9	100	42	100	38	100	2383	100	2272	100
<i>F/T employed</i>	28	53.8	32	68.1	1	10.0	7	77.8	27	64.3	25	65.8	1701	71.4	1829	80.5
<i>P/T employed seeking F/T job</i>	1	1.9	2	4.3	0	0	0	0	1	2.4	2	5.3	94	3.9	37	1.6
<i>Unemployed seeking F/T job</i>	7	13.5	1	2.1	4	40.0	1	11.1	3	7.1	0	0	157	6.6	53	2.3
<i>Further studies</i>	15	28.8	12	25.5	5	50.0	1	11.1	10	23.8	11	28.9	413	17.3	339	14.9
<i>Emigration/home country</i>	0	0	0	0	0	0	0	0	0	0	0	0	3	0.1	4	0.2
<i>Not seeking F/T job</i>	1	1.9	0	0	0	0	0	0	1	2.4	0	0	15	0.6	10	0.4

Table 1. Employment situation

* HKU overall refers to the figure for the total HKU population and includes M.B.,B.S. and B.D.S. graduates.

Where did the 1998 B.A. - Geography & Geology graduates go ?

III. Further Studies

Fifteen graduates pursued postgraduate studies. Of these, seven studied arts, four enrolled for a postgraduate certificate programme in education, two took up a master (coursework) programme in urban planning/studies and one each studied science and business administration. Table 2 shows the academic programmes pursued and Table 3 shows the source of finance.

Fields of Study	Academic Programmes		
	<i>M.Phil.</i>	<i>Master (Coursework)</i>	<i>Postgraduate Certificate</i>
<i>Arts</i>	5	2	
<i>Science</i>	1		
<i>Business Administration</i>			
<i>Urban Planning/Studies</i>		2	
<i>Education</i>			I 4

Table 2. Academic programme

Source of Finance	No. of Graduates
<i>Own Funds</i>	6
<i>Teaching Assistantship/Studentship</i>	6
<i>Government Grant & Loan</i>	3

Table 3. Source of finance for further studies

IV. Time Taken to Secure Employment

Among those graduates who were in full-time employment, 86% secured their first job offer before the end of September. The figure increased to 100% by the end of November. (Figure 1)

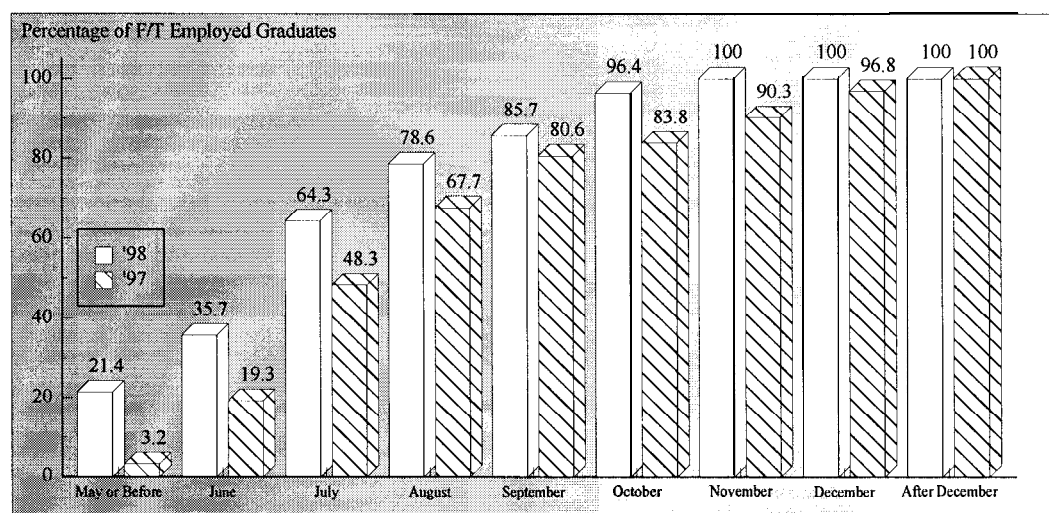


Figure 1. Time taken to secure employment

Where did the 1998 B.A. - Geography & Geology graduates go ?

V. Employment Sectors

61% (or 17 graduates) of the Geography & Geology graduates were employed in commerce & industry, followed by 36% (or 10 graduates) in education sector. The remaining 3.6% (or 1 graduate) joined the civil service. (Figures 2 & 3)

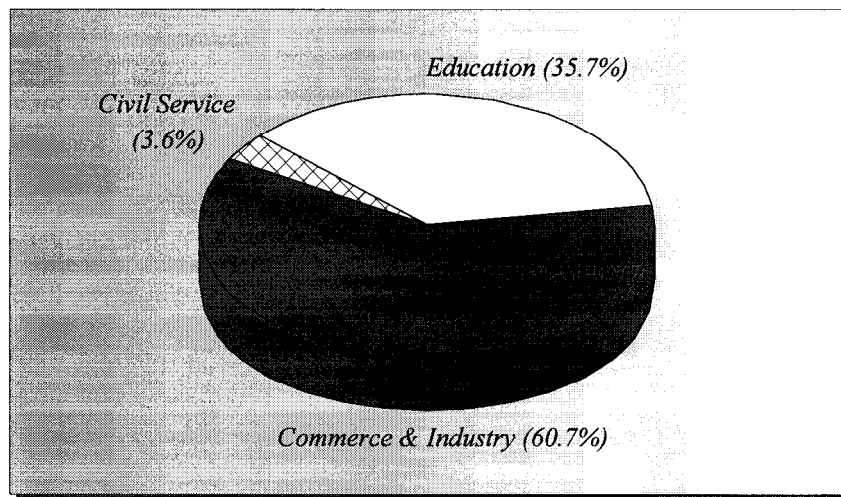


Figure 2. Employment sectors

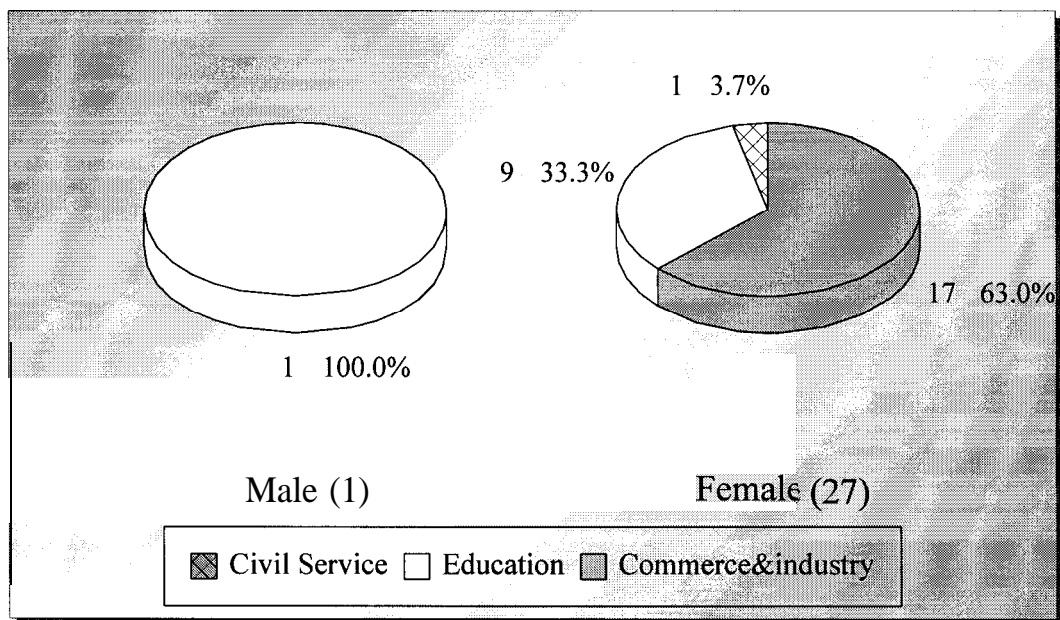


Figure 3. Employment sectors by sex

Where did the 1998 B.A. - Geography & Geology graduates go ?

VI. Basic Salary and Gross Income

The remuneration received by the Geography & Geology graduates is shown in Table 4.

	<i>Basic Salary</i>				<i>Gross Income</i>			
	B.A. - Geography & Geology		HKU Average*		B.A. - Geography & Geology		HKU Average*	
	'98	'97	'98	'97	'98	'97	'98	'97
<i>Mean</i>	\$13,456	\$12,351	\$15,496	\$15,749	\$14,097	\$13,989	\$16,557	\$17,552
<i>Median</i>	\$11,000	\$11,000	\$12,300	\$12,500	\$11,917	\$12,581	\$13,325	\$14,521
<i>Minimum</i>	\$8,000	\$7,000	\$1,000	\$4,400	\$8,667	\$7,000	\$5,000	\$5,000
<i>Maximum</i>	\$23,170	\$20,865	\$58,000	\$59,000	\$23,170	\$28,221	\$59,000	\$74,000

Table 4. Basic salary and gross income

* HKU average refers to the figure for the total HKU population and includes M.B.,B.S. and B.D.S. graduates.

VII. Number of Full-Time Job Offers

Of those in full-time employment, 64% of the graduates had more than one job offer. 29% reported having received three to eight or more job offers. (Figure 4)

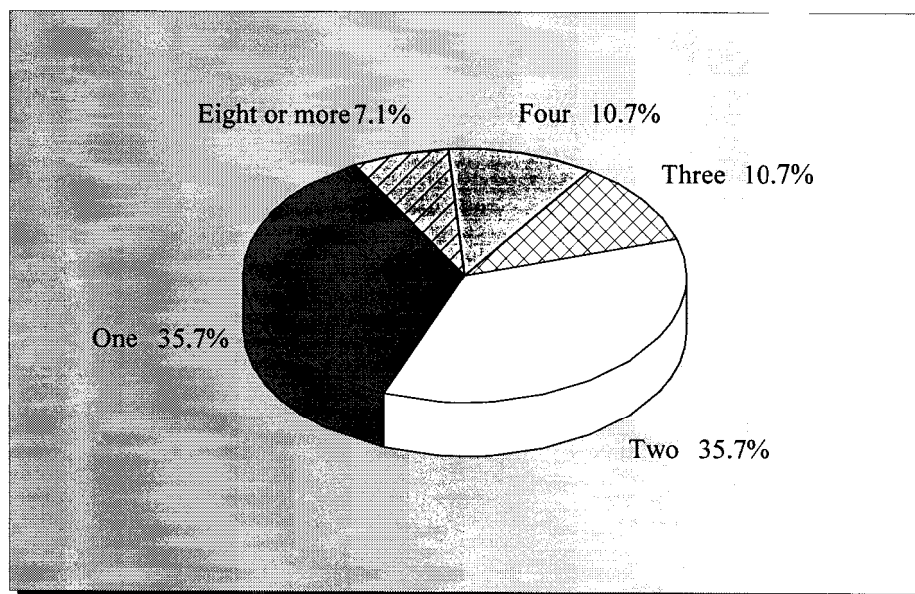


Figure 4. No. of full-time job offers

Where did the 1998 B.A. - Geography & Geology graduates go ?

VIII. Names of Employers and Job Titles

The job titles of the Geography & Geology graduates in full-time employment and the names of their employers are listed below.

<u>Employers :</u>	<u>Job Titles :</u>
CIVIL SERVICE -	
• HKSAR - Student Financial Assistance Agency	• Executive Officer
EDUCATION -	
• Carmel Holy Word Secondary School	• Graduate Master
• Clementi Secondary School	• Assistant Education Officer
• Cognitio College	• Graduate Master
• Farm Road Government Primary School	• Certificate Master
• HK Buddhist College	• Tutor
• Pentecostal School	• Graduate Master
• St Paul's Convent School	• Senior Librarian
• The University of Hong Kong	• Clerk
• The University of Hong Kong	• Clerk
• Organization's name not reported	• Graduate Master
COMMERCE & INDUSTRY -	
• Cathy Pacific Airways Ltd	• Customer Services Officer
• Disney Store	• Management Trainee
• Gale Well Ltd	• Leasing Officer
• Geologistics Ltd	• Administrative Officer
• Ho Wang SPB Transportation Consultant Ltd	• Graduate Transport Planner
• LLA Consultancy Ltd	• Assistant Transport Planner
• Long Win Bus Co Ltd	• Assistant Executive
• Multi-Gold Air & Sea Express Ltd	• Management Assistant
• MVA (HK) Ltd	• Graduate Transport Planner
• Orient Overseas Container Line Ltd	• Operations Assistant
• Poly Glot Translation Co Ltd	• Translation Coordinator
• Rising Precision Products Ltd	• Marketing Executive
• Schenker International (HK) Ltd	• Operation Clerk
• Scott Wilson (HK) Ltd	• Assistant Project Coordinator
• Toray Industries (HK) Ltd	• Sales Trainee
• Toray Industries (HK) Ltd	• Sales Executive
• Wealth Production Co Ltd	• Management Trainee

Table 5. List of employers and job titles

Note : Some alumni have indicated willingness to talk to individual students about their work. Their contact telephone number can be obtained from counsellors at CEPC.

Where did the 1998 B.A. - Geography & Geology graduates go ?

- IX.** Similar information on graduates from other disciplines of study is available for reference in the Careers Library. Please enquire with the CEPC.

Careers Education and Placement Centre
3/F Wong Chuang Lai Wah Building
Meng Wah Complex
The University of Hong Kong
Pokfulam Road
Hong Kong

Telephone : 28592314
Fax : 2559 5238
E-Mail : CEPC@HKUCC.HKU.HK
Homepage : <http://www.hku.hk/cepc>

Opening Hours : Monday - Friday (9:00 a.m. to 5:30 p.m.)
Saturday (9:00 a.m. to 12:00 p.m.)

Cindy Chan

August, 1999

The analysis is based on information provided by the respondents, and the Careers Education & Placement Centre should not be held responsible for any errors arising therefrom.

No part of this report may be reproduced in any form or by whatever means,
without written permission from the Director of the Careers Education and Placement Centre,
The University of Hong Kong