

I. Introduction

The information contained in this paper is extracted from the Graduate Employment Survey of 1998 to answer the following questions about Bachelor of Arts graduates with major in English : -

- . How were they employed six months after graduation ?
- . Of those who pursued further studies, what programmes did they follow ?
- . Of those who were employed full-time, how long did it take them to secure their first job offer ?
- . In which sectors were they employed ?
- . How much did they receive in salary ?
- . How many job offers did they receive ?
- . Who were their employers and what were their job titles ?

II. Employment Situation in 1998

Of the 133 respondents who majored in English, 74% (or 99 graduates) were in full-time employment within six months of graduation. 9.8% (or 13 graduates) went on for further studies. Another 14% (or 18 graduates) were still seeking full-time employment at the time of the survey. (Table 1)

	B.A. - English								HKU Overall*							
	Total				Male				Female							
	'98		'97		'98		'97		'98		'97					
	No.	%	No.	%	No.	%	No.	%	No.	%	No.	%				
<i>No. of respondents</i>	133	100	148	100	15	100	13	100	118	100	135	100	2383	100	2272	100
<i>F/T employed</i>	99	74.4	128	86.5	8	53.3	11	84.6	91	77.1	117	86.7	1701	71.4	1829	80.5
<i>P/T employed seeking F/T job</i>	11	8.3	1	0.7	3	20.0	0	0	8	6.8	1	0.7	94	3.9	37	1.6
<i>Unemployed seeking F/T job</i>	7	5.3	6	4.1	1	6.7	1	7.7	6	5.1	5	3.7	157	6.6	53	2.3
<i>Further studies</i>	13	9.8	11	7.4	2	13.3	1	7.7	11	9.3	10	7.4	413	17.3	339	14.9
<i>Emigration/home country</i>	1	0.8	1	0.7	1	6.7	0	0	0	0	1	0.7	3	0.1	4	0.2
<i>Not seeking F/T job</i>	2	1.5	1	0.7	0	0	0	0	2	1.7	1	0.7	15	0.6	10	0.4

Table 1. Employment situation,

* HKU overall refers to the figure for the total HKU population and includes M.B.,B.S. and B.D.S. graduates.

Where did the 1998 B.A. - English graduates go ?

III. Further Studies

Of the thirteen graduates who pursued postgraduate studies, seven took up a master's degree programme in the same discipline as their first degree while four studied education. Table 2 shows the academic programmes pursued & Table 3 shows the source of finance.

Fields of Study	Academic Programmes			
	<i>M.Phil.</i>	<i>Master (Coursework)</i>	<i>Postgraduate Certificate</i>	<i>Bachelor</i>
<i>Arts</i>	3	4		
<i>Education</i>		1	3	
<i>Urban Planning/Studies</i>		1		
<i>Law</i>				1

Table 2. Academic programmes

Source of Finance	No. of Graduates
<i>Own Funds</i>	7
<i>Teaching Assistantship/Studentship</i>	3
<i>Government Grant & Loan</i>	2

No Response = 1

Table 3. Source of finance for further studies

IV. Time Taken to Secure Employment

Among those graduates who were in full-time employment, 90% secured their first job offer before the end of September. The figure increased to 100% by the end of December. (Figure 1)

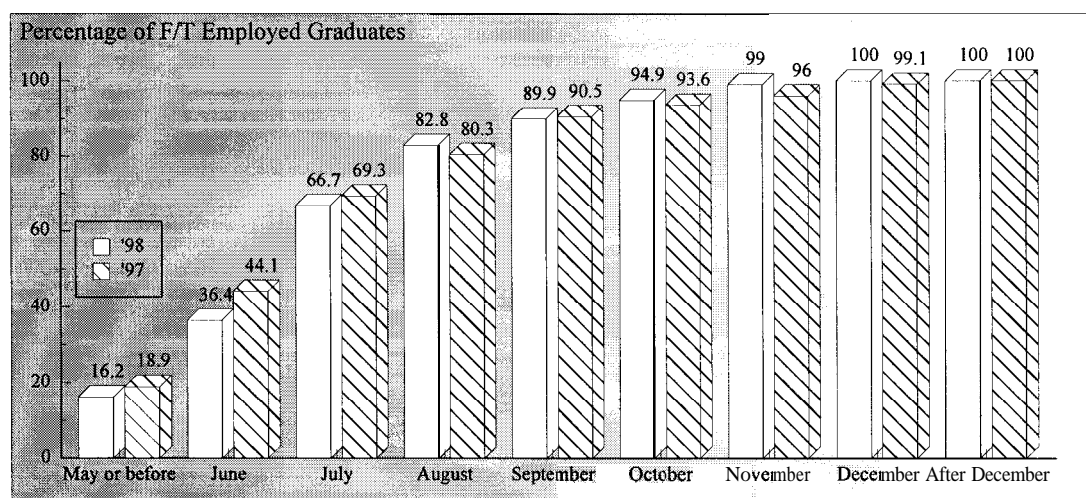
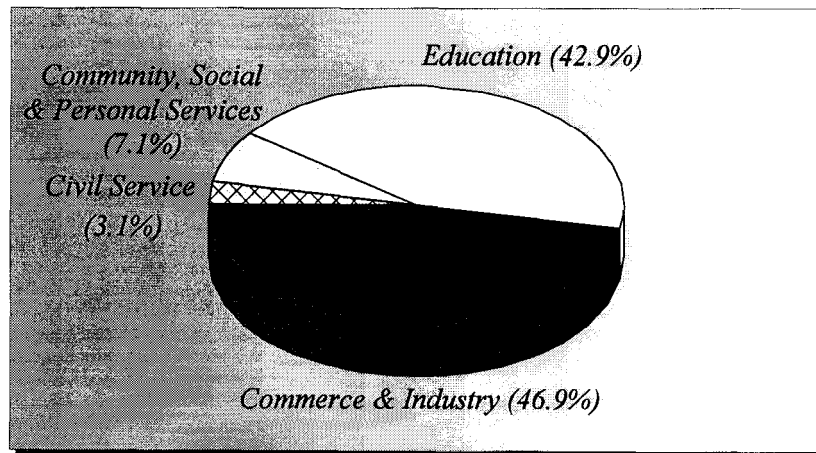


Figure 1. Time taken to secure employment

Where did the 1998 B.A. - English graduates go ?

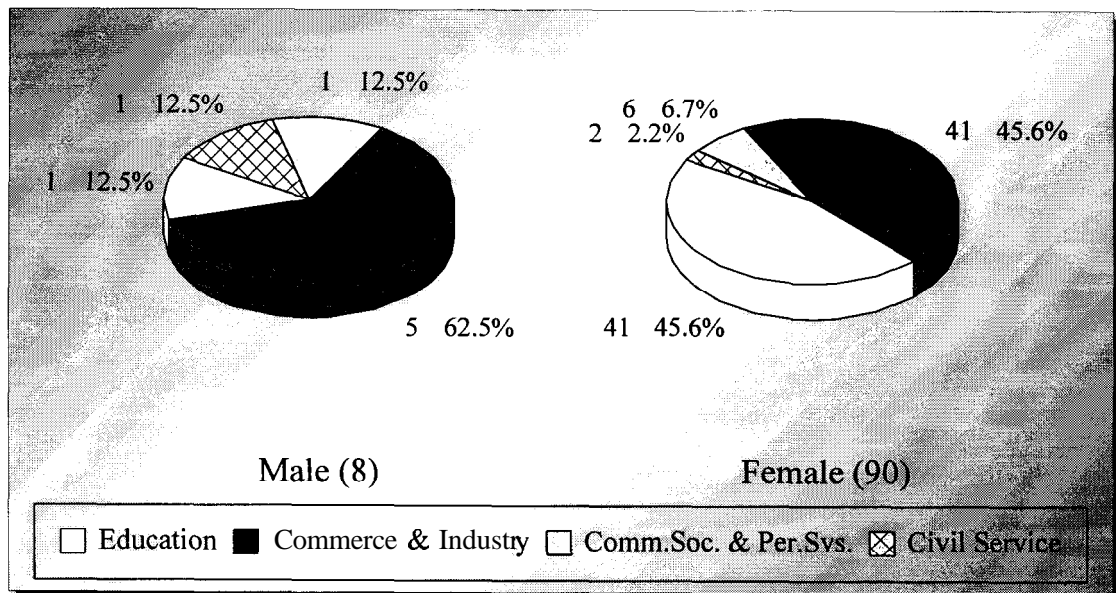
V. Employment Sectors

47% (or 46 graduates) of the English graduates were employed in commerce & industry, followed by 43% (or 42 graduates) in education and 7.1% (or 7 graduates) in community, social & personal services. The remaining 3.1% (or 3 graduates) joined the civil service. (Figures 2 & 3)



No Response = 1

Figure 2. Employment sectors



No Response = 1

Figure 3. Employment sectors by sex

Where did the 1998 B.A. - English graduates go ?

VI. Basic Salary and Gross Income

The remuneration received by the English graduates is shown in Table 4.

	<i>Basic Salary</i>				<i>Gross Income</i>			
	B.A. - English		HKU Average*		B.A. - English		HKU Average*	
	'98	'97	'98	'97	'98	'97	'98	'97
<i>Mean</i>	\$14,624	\$14,217	\$15,496	\$15,749	\$15,306	\$15,266	\$16,557	\$17,552
<i>Median</i>	\$12,000	\$12,000	\$12,300	\$12,500	\$13,671	\$14,000	\$13,325	\$14,521
<i>Minimum</i>	\$6,000	\$5,000	\$1,000	\$4,400	\$6,000	\$5,000	\$5,000	\$5,000
<i>Maximum</i>	\$33,000	\$28,910	\$58,000	\$59,000	\$35,750	\$28,910	\$59,000	\$74,000

Table 4. Basic salary and gross income

* HKU average refers to the figure for the total HKU population and includes M.B.,B.S. and B.D.S. graduates.

VII. Number of Full-Time Job Offers

Of those in full-time employment, 54% of the graduates had more than one job offer. 25% reported having received three to seven job offers. (Figure 4)

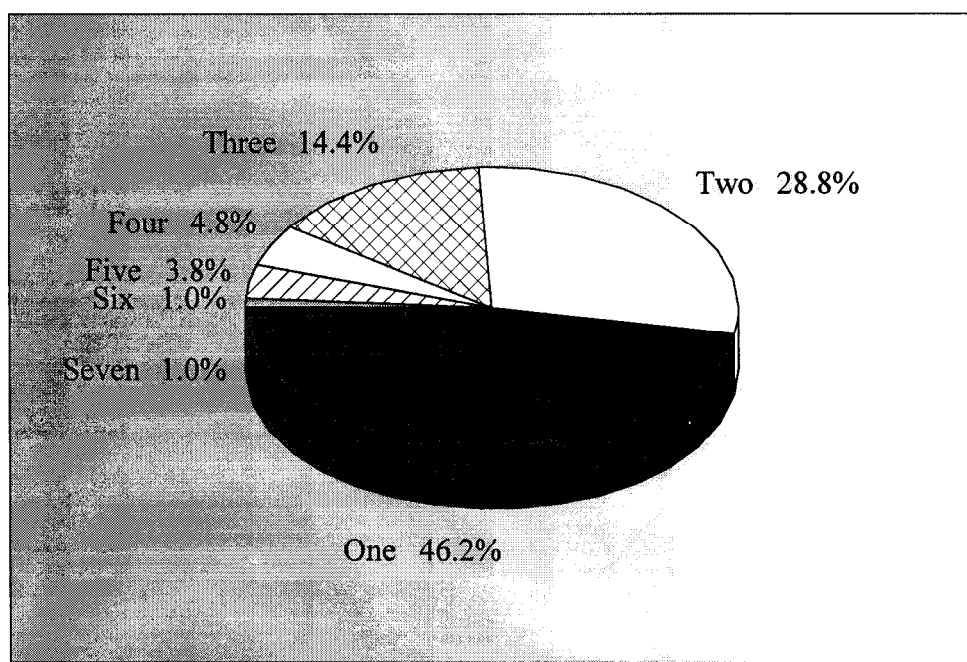


Figure 4. No. of full-time job offers

Where did the 1998 B.A. - English graduates go ?

VIII. Names of Employers and Job Titles

The job titles of the English graduates in full-time employment and the names of their employers are listed below.

<u><i>Employers :</i></u>	<u><i>Job Titles :</i></u>
CIVIL SERVICE -	
• HKSAR - Education Department	• Assistant Education Officer
• HKSAR - Immigration Department	• Immigration Officer
• HKSAR - Official Language Agency	• Chinese Language Officer
EDUCATION -	
• Buddhist Hung Sean Chau Memorial College	• Certificate Master
• Buddhist Tai Hung College	• Graduate Master
• Canossa College	• Graduate Master
• Caritas	• Graduate Master
• Choi Hung Estate Catholic Secondary School	• Supply Teacher
• Delia Memorial School	• Graduate Master
• Fresh Fish Trader's School	• Certificate Master
• HK True Light College	• Graduate Master
• HKCWC Fung Yiu King Memorial Secondary School	• Graduate Master
• Holy Carpenter Prevocational School	• Graduate Master
• Kiangsu-Chekiang College	• Certificate Master
• Kowloon Tong Secondary School	• Graduate Master
• LST Leung Chik Wai Memorial School	• Graduate Master
• Mong Kok Workers' Children School	• Graduate Master
• NT Heung Yee Kuk Yuen Long District School	• Graduate Master
• Our Lady's College	• Graduate Master
• PLK Ma Kam Ming College	• Graduate Master
• Po Chiu College	• Graduate Master
• Po Kok Girl's Middle School	• Graduate Master
• Pok Oi Hospital Chan Kwok Wai Primary School	• Certificate Master
• Precious Blood Secondary School	• Graduate Master
• Raimondi College	• Graduate Master
• Shap Pat Heung Rural Committee Kung Yik She Secondary School	• Graduate Master
• Shung Tak Catholic English College	• Graduate Master
• SKH Tsang Shiu Tim Secondary School	• Graduate Master
• St Mary's Canossian School	• Certificate Master
• St. Mary's Canossian School	• Certificate Master
• St. Peter's Secondary School	• Graduate Master
• STFA Cheng Yu Tung Secondary School	• Graduate Master
• STFA Leung Kit Wah Primary School	• Certificate Master
• The Chinese University of Hong Kong	• Programme Assistant
• The University of Hong Kong	• Clerk
• The University of Hong Kong	• Clerk
• True Light Middle School of HK	• Certificate Master
• TWGHs Wong Fut Nam College	• Graduate Master
• TWGHs Wong Tee Tar Tat Memorial School	• Certificate Master
• Valtorta College	• Graduate Master

Where did the 1998 B.A. - English graduates go ?

• Wellington College	• Certificate Master
• YCH Tung Chi Ying Memorial Secondary School	• Certificate Master
• YCH Tung Chi Ying Memorial Secondary School	• Certificate Master
• Yenching College	• Graduate Master
• Organization's name not reported	• Graduate Master
COMMUNITY, SOCIAL & PERSONAL SERVICES -	
• British Council	• Programme Officer
• District Councillor Office	• Personal Assistant
• HK Arts Festival Society	• Ticketing Assistant
• Modern Educational Research Society Ltd	• Assistant Editor
• The Hong Kong Football Association	• Sports Executive
• The United Institute of International Education	• Administration Assistant
• Organization's name not reported	• Tutor
COMMERCE & INDUSTRY -	
• Asian Sources Publishing Co	• Copywriter
• Associated Medical Surprise Co Ltd	• Marketing Assistant
• Burwill Holdings Ltd	• Secretary
• Cathy Pacific Airways Ltd	• Customer Service Officer
• Che San Stationery Co Ltd	• Officer
• Chee Fat Industrial Co	• Marketing Executive
• Chow Hoi Tang Cultural Enterprise	• Marketing Executive
• Citibank NA	• Officer
• Classroom Publications Ltd	• Assistant Editor
• Classroom Publications Ltd	• Editor
• Double Rice Development Ltd	• Marketing Executive
• Douceur Fashions Ltd	• Assistant Merchandiser
• Dynasty (Holdings) Property Agency Ltd	• Clerk
• Everbest Building Material Co Ltd	• Sales Executive
• FA Kee Hardware Retail	• Sales Executive
• Giordano Ltd	• Management Trainee
• Hong Kong Sales (Knitwear) Ltd	• Assistant Merchandiser
• Hong Kong Securities Clearing Co Ltd	• Assistant Customer Services Manager
• Hong Kong Telecom	• Account Executive
• HongkongBank	• Customer Services Officer
• Land Resources (China) Co Ltd	• Marketing & Customer Relation Assistant
• LST Lufthansa Services (Asia) Ltd	• Administrative Assistant
• Meeenn Erickson	• Account Executive
• Miracle Handbag Manufacturing Ltd	• Executive Secretary
• National Resources Petroleum Ltd	• Personal Assistant
• New Dawn Promotions	• Account Executive
• Nokia (HK) Ltd	• Human Resources Assistant
• Oriental Daily Groups	• Reporter
• Paul W Tse Solicitors	• Conveyancing Clerk
• Plaza Premium Lounge	• Marketing Executive
• Raymond Industrial Ltd	• Liaison Officer
• Review Publishing Co Ltd	• Proof-reader
• Right Point (HK) Ltd	• Administration Assistant
• Scott Wilson (HK) Ltd	• Assistant Project Coordinator
• Shun Hing Power & Transmission Equipment Co Ltd	• Sales Coordinator
• So, Keung, Yip & Sin Solicitors	• Secretary

Where did the 1998 B.A. - English graduates go ?

• TDK (HK) Corporation Ltd	. Sales Executive
. The Carlyle Group	. Executive Assistant
. The Sun	. Reporter
. Thomas Cook	. Customer Service Representative
. Thorn Security (HK) Ltd	. Secretary
. Wah Ming Hong	. Purchasing Assistant
• Wheatear Co Ltd	• Administrator
. Winterthur Life Insurance Co	. Management Trainee
. World Diamond	• Administration Officer
. Organization's name not reported	• Assistant Merchandiser

No Response = 2

Table 5. List of employers and job titles

Note : Some alumni have indicated willingness to talk to individual students about their work. Their contact telephone number can be obtained from **counsellors** at CEPC.

IX. Similar information on graduates from other disciplines of study is available for reference in the Careers Library. Please enquire with the CEPC.

Careers Education and Placement Centre
3/F Wong Chuang Lai Wah Building
Meng Wah Complex
The University of Hong Kong
Pokfulam Road
Hong Kong

Telephone : 28592314
Fax : 2559 5238
E-Mail : CEPC@HKUCC.HKU.HK
Homepage : <http://www.hku.hk/cepc>

Opening Hours : Monday - Friday (9:00 a.m. to 5:30 p.m.)
Saturday (9:00 a.m. to 12:00 p.m.)

Cindy Chan

September, 1999

The analysis is based on information provided by the respondents, and the Careers Education & Placement Centre should not be held responsible for any errors arising therefrom.

No part of this report may be reproduced in any form or by whatever means, without written permission from the Director of the Careers Education and Placement Centre, The University of Hong Kong