

Where did the 1998 B.A. - Chinese graduates

go ?

I. Introduction

The information contained in this paper is extracted from the Graduate Employment Survey of 1998 to answer the following questions about Bachelor of Arts graduates with major in Chinese : -

- How were they employed six months after graduation ?
- Of those who pursued further studies, what programmes did they follow ?
- Of those who were employed full-time, how long did it take them to secure their first job offer ?
- In which sectors were they employed ?
- How much did they receive in salary ?
- How many job offers did they receive ?
- Who were their employers and what were their job titles ?

II. Employment Situation in 1998

Of the 52 respondents who majored in Chinese, 67% (or 35 graduates) were in full-time employment within six months of graduation. 17% (or 9 graduates) went on for further studies. Another 12% (or 6 graduates) were still seeking full-time employment at the time of the survey. (Table 1)

	B.A. - Chinese								HKU Overall*							
	Total				Male				Female							
	'98		'97		'98		'97		'98		'97					
	No.	%	No.	%	No.	%	No.	%	No.	%	No.	%				
<i>No. of respondents</i>	52	100	71	100	14	100	12	100	38	100	59	100	2383	100	2272	100
<i>F/T employed</i>	35	67.3	54	76.1	9	64.3	7	58.3	26	68.4	47	79.7	1701	71.4	1829	80.5
<i>P/T employed seeking F/T job</i>	2	3.8	3	4.2	0	0	1	8.3	2	5.3	2	3.4	94	3.9	37	1.6
<i>Unemployed seeking F/T job</i>	4	7.7	1	1.4	1	7.1	0	0	3	7.9	1	1.7	157	6.6	53	2.3
<i>Further studies</i>	9	17.3	12	16.9	4	28.6	3	25.0	5	13.2	9	15.3	413	17.3	339	14.9
<i>Emigration/home country</i>	1	1.9	0	0	0	0	0	0	1	2.6	0	0	3	0.1	4	0.2
<i>Not seeking F/T job</i>	1	1.9	1	1.4	0	0	1	8.3	1	2.6	0	0	15	0.6	10	0.4

Table 1. Employment situation

* HKU overall refers to the figure for the total HKU population and includes M.B.,B.S. and B.D.S. graduates.

Where did the 1998 B.A. - Chinese graduates go ?

III. Further Studies

Nine graduates pursued postgraduate studies. Of these, two took up a M.Phil. programme in Arts, one took up a M.Phil. programme in Social Sciences and six enrolled for a postgraduate certificate programme in education. Table 2 shows the academic programmes pursued & Table 3 show the source of finance.

Fields of Study	Academic Programmes	
	M.Phil.	Postgraduate Certificate
Arts	2	
Social Sciences	1	
Education		6

Table 2. Academic programmes

Source of Finance	No. of Graduates
Own Funds	4
Teaching Assistantship/Studentship	2
Government Grant & Loan	3

Table 3. Source of finance for further studies

IV. Time Taken to Secure Employment

Among those graduates who were in full-time employment, 89% secured their first job offer before the end of September. The figure increased to 100% by the end of November. (Figure 1)

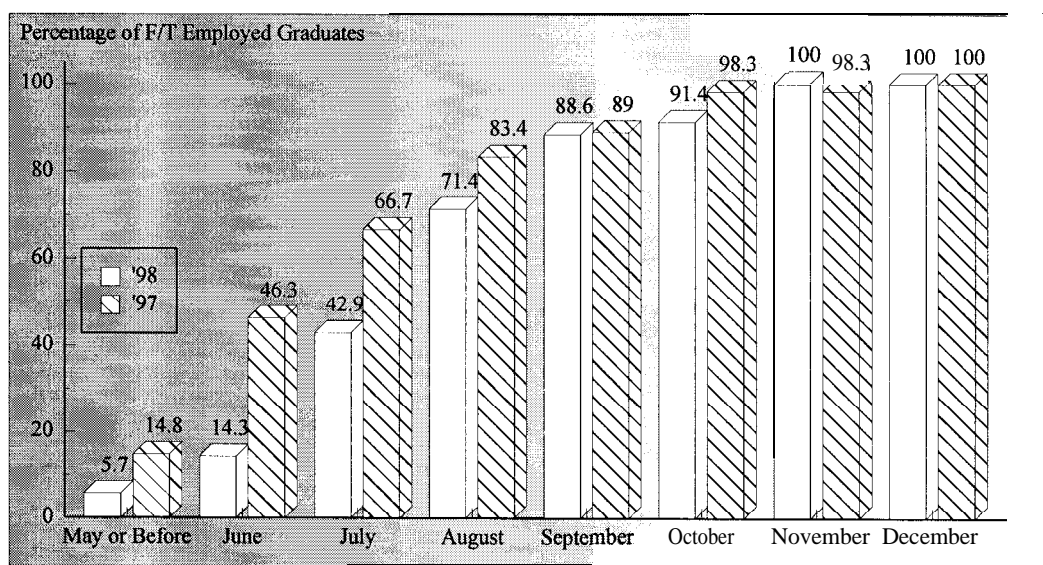


Figure 1. Time taken to secure employment

Where did the 1998 B.A. - Chinese graduates go ?

V. Employment Sectors

60% (or 21 graduates) of the Chinese graduates were employed in commerce & industry, followed by 31% (or 11 graduates) in education and 5.7% (or 2 graduates) in community, social & personal services. The remaining 2.9% (or 1 graduate) joined the civil service. (Figures 2 & 3)

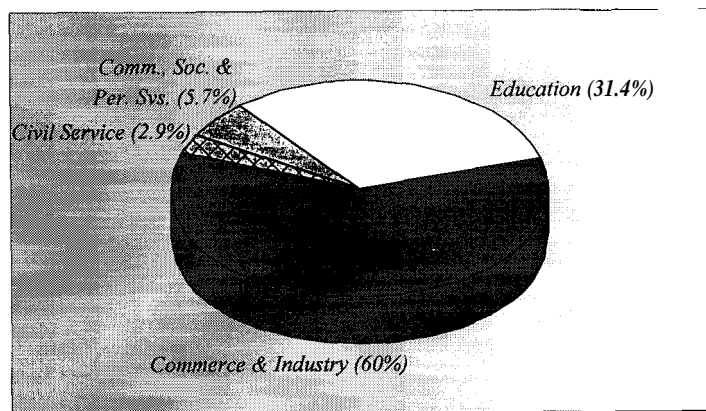


Figure 2. Employment sectors

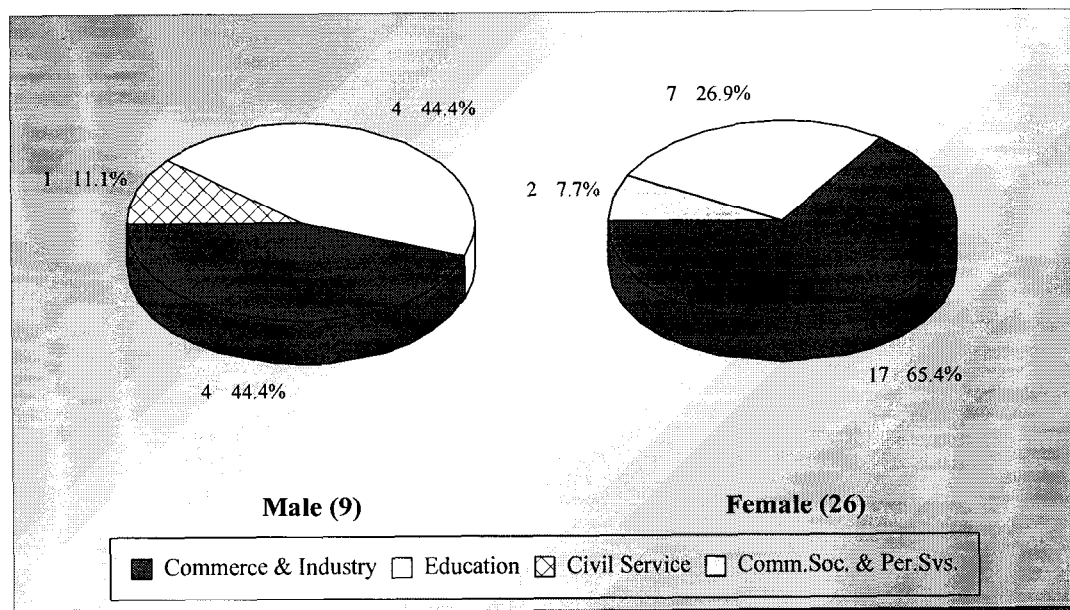


Figure 3. Employment sectors by sex

Where did the 1998 B.A. - Chinese graduates go ?

VI. Basic Salary and Gross Income

The remuneration received by the Chinese graduates is shown in Table 4.

	<i>Basic Salary</i>				<i>Gross Income</i>			
	B.A. - Chinese		HKU Average*		B.A. - Chinese		HKU Average*	
	'98	'97	'98	'97	'98	'97	'98	'97
<i>Mean</i>	\$12,741	\$13,960	\$15,496	\$15,749	\$14,366	\$15,503	\$16,557	\$17,552
<i>Median</i>	\$10,000	\$12,000	\$12,300	\$12,500	\$12,292	\$14,137	\$13,325	\$14,521
<i>Minimum</i>	\$6,000	\$8,000	\$1,000	\$4,400	\$6,000	\$10,000	\$5,000	\$5,000
<i>Maximum</i>	\$22,800	\$30,000	\$58,000	\$59,000	\$25,833	\$40,000	\$59,000	\$74,000

Table 4. Basic salary and gross income

* HKU average refers to the figure for the total HKU population and includes M.B.,B.S. and B.D.S. graduates.

VII. Number of Full-Time Job Offers

Of those in full-time employment, 49% of the graduates had more than one job offer. 29% reported having received three or four job offers. (Figure 4)

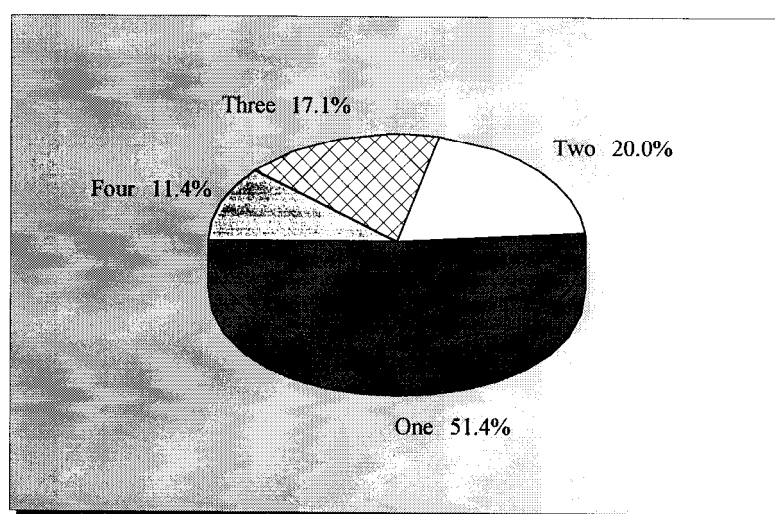


Figure 4. No. of full-time job offers

Where did the 1998 B.A. - Chinese graduates go ?

VIII. Names of Employers and Job Titles

The job titles of the Chinese graduates in full-time employment and the names of their employers are listed below.

<u>Employers :</u>	<u>Job Titles :</u>
CIVIL SERVICE -	
• HKSAR - Government Supplies Department	• Casual Worker
EDUCATION -	
• Caritas Institute for Further & Adult Education	• Graduate Master
• CCC Pan Lee Lai Fun Memorial Secondary School	• Certificate Master
• HK College of Management	• Tutor
• Ma On Shan Tsung Tsin Secondary School	• Supply Teacher
• Marden Foundation Caritas Prevocational School	• Graduate Master
• PLK Tin Ka Ping Primary School	• Certificate Master
• St Peter's Secondary School	• Graduate Master
• TWGHs Kwan Fong Kai Chi School	• Graduate Master
• YCH Tung Chi Ying Memorial Secondary School	• Certificate Master
• Organization's name not reported	• Certificate Master
COMMUNITY, SOCIAL & PERSONAL SERVICES -	
• Hong Kong Tourist Association	• Research Interviewer
• Office of Chan Choi Hi	• Councillor's Personal Assistant
COMMERCE & INDUSTRY -	
• American International Assurance Co Ltd	• Financial Planner
• Asian Sources Publishing Co	• Data Research Executive
• Body Creation Lingerie Ltd	• Personal Secretary
• Capstone Enterprise	• Assistant Editor
• Cathy Pacific Airways Ltd	• Customer Services Officer
• Creative Publishing Co Ltd	• Editor
• Diana (HK) Co Ltd	• Assistant Body Shaping Counsellor
• HongkongBank	• Counter Services Officer
• Jovian Financial Communications Ltd	• Account Executive
• Keen Lloyd Holdings Ltd	• Secretary
• Marks & Spencer	• Management Trainee
• Martex Trading	• Assistant Merchandiser
• McDonald's Restaurant	• Manager Trainee
• Midori Mark (HK) Ltd	• Marketing Assistant
• New World First Bus Services Ltd	• Public Affairs Assistant
• Prudential Assurance Co Ltd	• Insurance Consultant
• Red Boxes	• Secretary
• System Media Ltd	• Secretary
• TDK (HK) Corporation Ltd	• Sales Executive
• Yetyue Ltd	• Clerk

No Response = 2

Table 5. List of employers and job titles

Note: Some alumni have indicated willingness to talk to individual students about their work. Their contact telephone number can be obtained from counsellors at CEPC.

Where did the 1998 B.A. - Chinese graduates go ?

- IX.** Similar information on graduates from other disciplines of study is available for reference in the Careers Library. Please enquire with the CEPC.

Careers Education and Placement Centre
3/F Wong Chuang Lai Wah Building
Meng Wah Complex
The University of Hong Kong
Pokfulam Road
Hong Kong

Telephone : 28592314
Fax : 2559 5238
E-Mail : CEPC@HKUCC.HKU.HK
Homepage : <http://www.hku.hk/cepc>

Opening Hours : Monday - Friday (9:00 a.m. to 5:30 p.m.)
Saturday (9:00 a.m. to 12:00 p.m.)

Cindy Chan

August, 1999

The analysis is based on information provided by the respondents, and the Careers Education & Placement Centre should not be held responsible for any errors arising therefrom.

No part of this report may be reproduced in any form or by whatever means,
without written permission from the Director of the Careers Education and Placement Centre,
The University of Hong Kong