

Where did the 1998 B.A. - Chinese Language & Literature graduates go ?

I. Introduction

The information contained in this paper is extracted from the Graduate Employment Survey of 1998 to answer the following questions about Bachelor of Arts graduates with major in Chinese Language & Literature : -

- . How were they employed six months after graduation ?
- Of those who pursued further studies, what programmes did they follow ?
- . Of those who were employed full-time, how long did it take them to secure their first job offer ?
- . In which sectors were they employed ?
- . How much did they receive in salary ?
- . How many job offers did they receive ?
- Who were their employers and what were their job titles ?

II. Employment Situation in 1998

Of the 35 respondents who majored in Chinese Language & Literature, 63% (or 22 graduates) were in full-time employment within six months of graduation. 14% (or 5 graduates) went on for further studies. Another 20% (or 7 graduates) were still seeking full-time employment at the time of the survey. (Table 1)

	B.A. - Chinese Language and Literature						HKU Overall*	
	Total		Male		Female			
	'98		'98		'98		'98	
	No.	%	No.	%	No.	%	No.	%
<i>No. of respondents</i>	35	100	1	100	34	100	2383	100
<i>F/T employed</i>	22	62.9	1	100	21	61.8	1701	71.4
<i>P/T employed seeking F/T job</i>	0	0	0	0	0	0	94	3.9
<i>Unemployed seeking F/T job</i>	7	20.0	0	0	7	20.6	157	6.6
<i>Further studies</i>	5	14.3	0	0	5	14.7	413	17.3
<i>Emigration/home country</i>	0	0	0	0	0	0	3	0.1
<i>Not seeking F/T job</i>	1	2.9	0	0	1	2.9	15	0.6

Table 1. Employment situation

* HKU overall refers to the figure for the total HKU population and includes M.B.,B.S. and B.D.S. graduates.

Where did the 1998 B.A. - Chinese Language & Literature graduates go ?

III. Further Studies

Five graduates pursued postgraduate studies. Of these, three took up a M.Phil. programme in arts while two enrolled for a postgraduate certificate programme in education. Table 2 shows the academic programmes pursued & Table 3 shows the source of finance.

Fields of Study	Academic Programmes	
	M.Phil	Postgraduate Certificate
Arts	3	
Education		2

Table 2. Academic programmes

Source of Finance	No. of Graduates
Own Funds	1
Teaching Assistantship/Studentship	2
Full Scholarship	1
Government Grant & Loan	1

Table 3. Source of finance for further studies

IV. Time Taken to Secure Employment

Among those graduates who were in full-time employment, 96% secured their first job offer before the end of September. The figure increased to 100% by the end of October. (Figure 1)

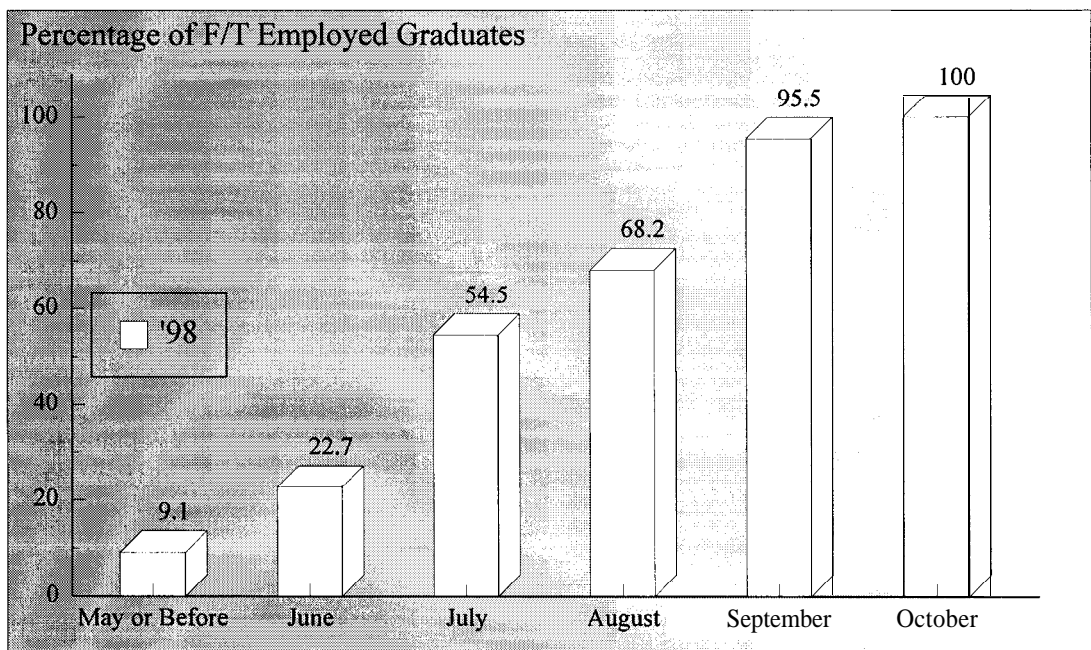


Figure 1. Time taken to secure employment

Where did the 1998 B.A. - Chinese Language & Literature graduates go ?

V. Employment Sectors

55% (or 12 graduates) of the Chinese Language & Literature graduates were employed in commerce & industry, followed by 41% (or 9 graduates) in education and 4.5% (or 1 graduate) in community, social & personal services. (Figures 2 & 3)

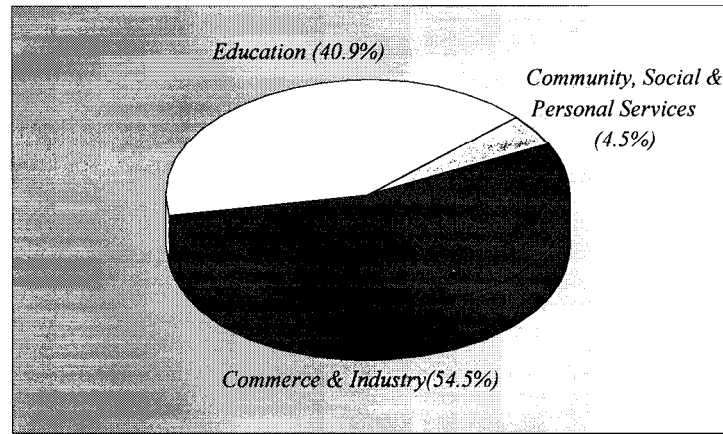


Figure 2. Employment sectors

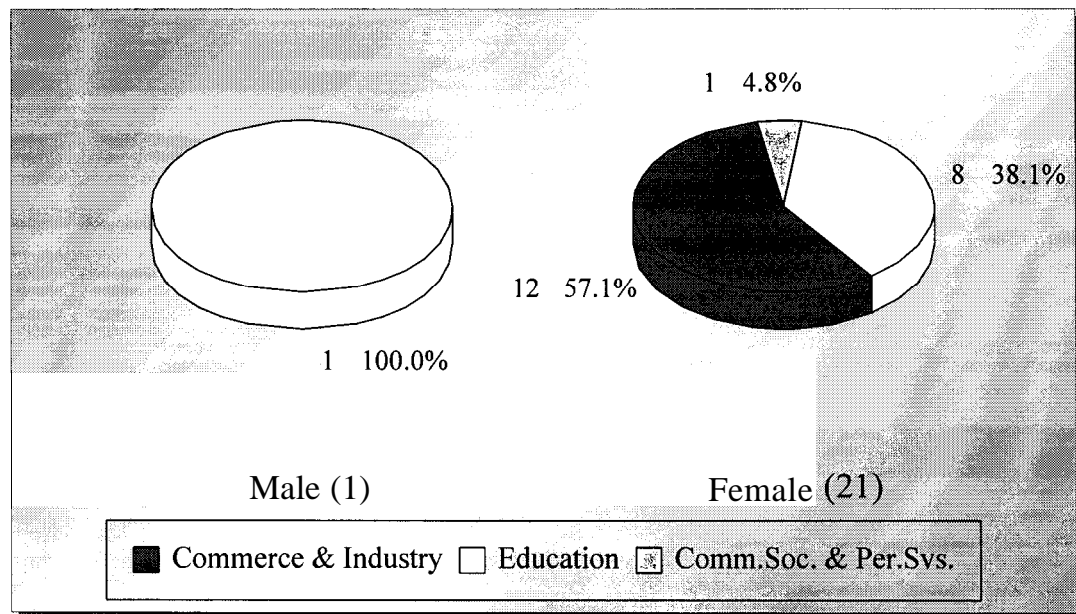


Figure 3. Employment sectors by sex

Where did the 1998 B.A. - Chinese Language & Literature graduates go ?

VI. Basic Salary and Gross Income

The remuneration received by the Chinese Language & Literature graduates is shown in Table 4.

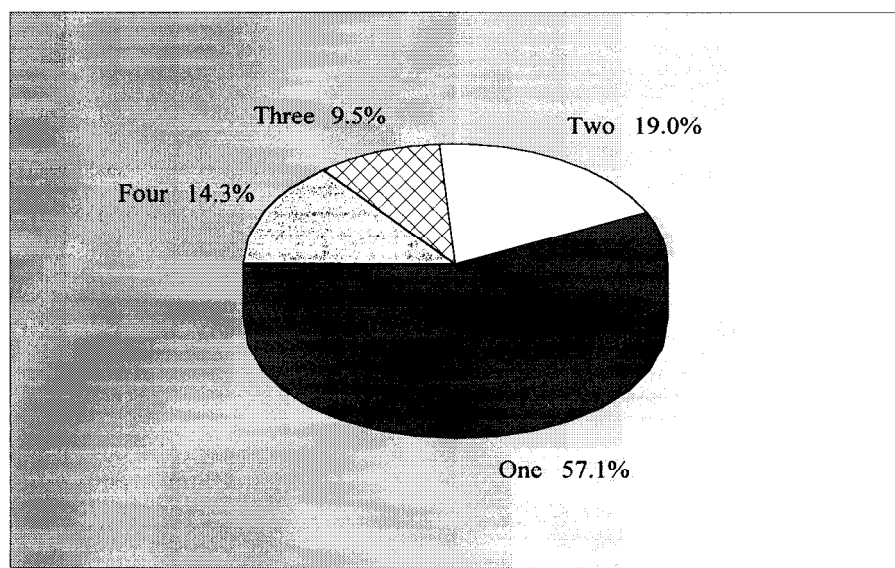
	<i>Basic Salary</i>		<i>Gross Income</i>	
	B.A. - Chinese Language & Literature	HKU Average*	B.A. - Chinese Language & Literature	HKU Average*
	'98	'98	'98	'98
<i>Mean</i>	\$12,726	\$15,496	\$14,176	\$16,557
<i>Median</i>	\$10,000	\$12,300	\$14,083	\$13,325
<i>Minimum</i>	\$7,500	\$1,000	\$8,000	\$5,000
<i>Maximum</i>	\$22,075	\$58,000	\$25,833	\$59,000

Table 4. Basic salary and gross income

* HKU average refers to the figure for the total HKU population and includes M.B.,B.S. and B.D.S. graduates.

VII. Number of Full-Time Job Offers

Of these in full-time employment, 43% of the graduates had more than one job offer. 24% reported having received three or four job offers. (Figure 4)



No response = 1

Figure 4. No. of full-time job offers

Where did the 1998 B.A. - Chinese Language & Literature graduates go ?

VIII. Names of Employers and Job Titles

The job titles of the Chinese Language & Literature graduates in full-time employment and the names of their employers are listed below.

<u><i>Employers :</i></u>	<u><i>Job Titles :</i></u>
EDUCATION -	
<ul style="list-style-type: none"> • Beacon College • Diocesan Boys' School • Hong Kong Baptist University • Raimondi College • True Light Middle School of HK • TWGHs HK & Kowloon Electrical Appliance Primary School • TWGHs Wong Tee Tar Tat Memorial School • Wong Shiu Chi Middle School • YPICA Lee Lim Ming College 	<ul style="list-style-type: none"> • Graduate Master • Certificate Master • Research Assistant • Graduate Master • Certificate Master • Certificate Master • Certificate Master • Certificate Master • Certificate Master
COMMUNITY, SOCIAL & PERSONAL SERVICES -	
<ul style="list-style-type: none"> • Office of Chan Choi Hi 	<ul style="list-style-type: none"> • Councillor's Personal Assistant
COMMERCE & INDUSTRY -	
<ul style="list-style-type: none"> • ATL Computer System Co Ltd • Diana (HK) Co Ltd • Dor Fook Co Ltd • Easy Finder Ltd • FA Kee Hardware Retail • Hablo Co Ltd • Hong Kong Sales (Knitwear) Ltd • KCFok & Co • Kabgartic Co Ltd • Metro Broadcasting • Stanford House • Organization's name not reported 	<ul style="list-style-type: none"> • System Consultant • Assistant Body Shaping Counsellor • Clerk • Copywriter • Sales Executive • Merchandiser Assistant • Assistant Merchandiser • Secretary • Secretary • Creative Copywriter • Administrative Assistant • Administration Officer

Table 5. List of employers and job titles

Note : Some alumni have indicated willingness to talk to individual students about their work. Their contact telephone number can be obtained from counsellors at CEPC.

Where did the 1998 B.A. - Chinese Language & Literature graduates go ?

- IX.** Similar information on graduates from other disciplines of study is available for reference in the Careers Library. Please enquire with the CEPC.

Careers Education and Placement Centre
3/F Wong Chuang Lai Wah Building
Meng Wah Complex
The University of Hong Kong
Pokfulam Road
Hong Kong

Telephone : 28592314
Fax : 2559 5238
E-Mail : CEPC@HKUCC.HKU.HK
Homepage : <http://www.hku.hk/cepc>

Opening Hours : Monday - Friday (9:00 a.m. to 5:30 p.m.)
Saturday (9:00 a.m. to 12:00 p.m.)

Cindy Chan

August, 1999

The analysis is based on information provided by the respondents, and the Careers Education & Placement Centre should not be held responsible for any errors arising therefrom.

No part of this report may be reproduced in any form or by whatever means,
without written permission from the Director of the Careers Education and Placement Centre,
The University of Hong Kong