

# Where did the 1998 B.A. - Comparative Literature graduates go ?

## I. Introduction

The information contained in this paper is extracted from the Graduate Employment Survey of 1998 to answer the following questions about Bachelor of Arts graduates with major in Comparative Literature :-

- How were they employed six months after graduation ?
- Of those who pursued further studies, what programmes did they follow ?
- Of those who were employed full-time, how long did it take them to secure their first job offer ?
- In which sectors were they employed ?
- How much did they receive in salary ?
- How many job offers did they receive ?
- Who were their employers and what were their job titles ?

## II. Employment Situation in 1998

Of the 59 respondents who majored in Comparative Literature, 71% (or 42 graduates) were in full-time employment within six months of graduation. 15% (or 9 graduates) went on for further studies. Another 10% (or 6 graduates) were still seeking full-time employment at the time of the survey. (Table 1)

	B.A. - Comparative Literature						HKU Overall*									
	Total		Male		Female											
	'98	'97	'98	'97	'98	'97	'98	'97	'98	'97						
	No.	%	No.	%	No.	%	No.	%	No.	%						
<i>No. of respondents</i>	59	100	60	100	5	100	4	100	54	100	56	100	2383	100	2272	100
<i>F/T employed</i>	42	71.2	49	81.7	3	60.0	3	75.0	39	72.2	46	82.1	1701	71.4	1829	80.5
<i>P/T employed seeking F/T job</i>	2	3.4	1	1.7	0	0	0	0	2	3.7	1	1.8	94	3.9	37	1.6
<i>Unemployed seeking F/T job</i>	4	6.8	1	1.7	0	0	1	25.0	4	7.4	0	0	157	6.6	53	2.3
<i>Further studies</i>	9	15.3	9	15.0	2	40.0	0	0	7	13.0	9	16.1	413	17.3	339	14.9
<i>Emigration/home country</i>	0	0	0	0	0	0	0	0	0	0	0	0	3	0.1	4	0.2
<i>Not seeking F/T job</i>	2	3.4	0	0	0	0	0	0	2	3.7	0	0	15	0.6	10	0.4

Table 1. Employment situation

\* HKU overall refers to the figure for the total HKU population and includes M.B.,B.S. and B.D.S. graduates.

## *Where did the 1998 B.A. - Comparative Literature graduates go ?*

---

### III. Further Studies

Seven graduates pursued postgraduate studies in the same discipline as their first degree, while one graduate each took up a master (coursework) programme in social sciences and international studies. Table 2 shows the academic programmes pursued & Table 3 shows the source of finance.

Fields of Study	Academic Programmes	
	<i>M. Phil,</i>	<i>Master (Coursework)</i>
<i>Arts</i>	4	3
<i>Social Sciences</i>		1
<i>International Studies</i>		1

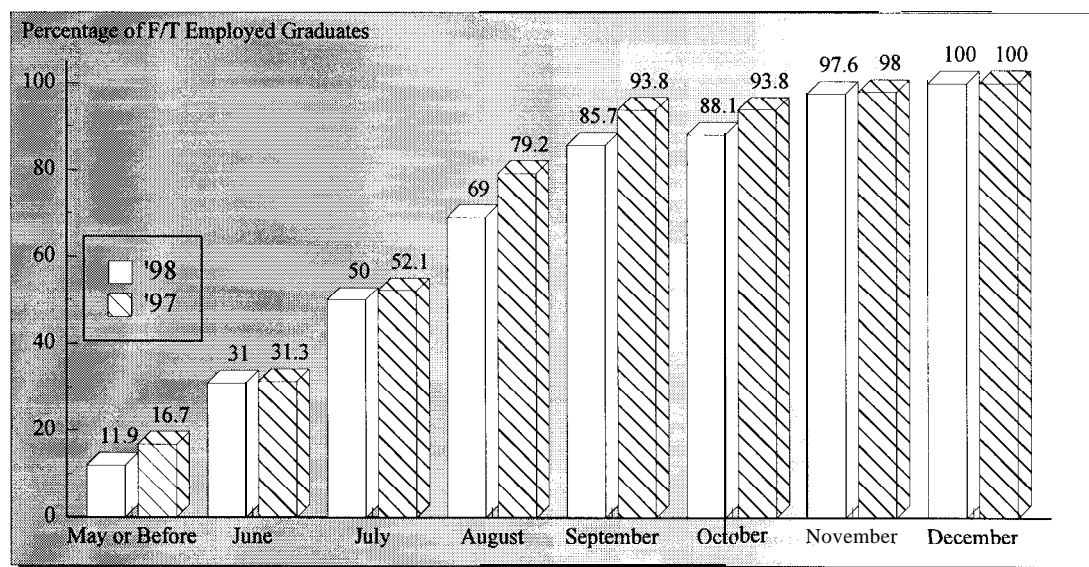
*Table 2. Academic programmes*

Source of Finance	No. of Graduates
<i>Own Funds</i>	5
<i>Teaching Assistantship/Studentship</i>	4

*Table 3. Source of finance for further studies*

### IV. Time Taken to Secure Employment

Among those graduates who were in full time employment, 86% secured their first job offer before the end of September. The figure increased to 100% by the end of December. (Figure 1)

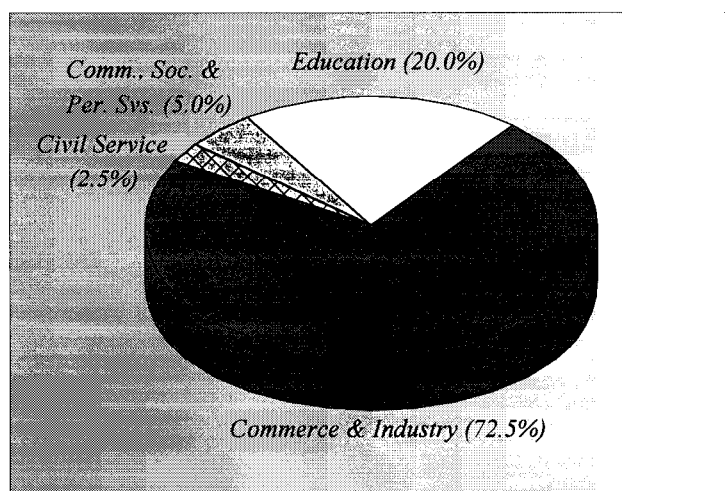


*Figure 1. Time taken to secure employment*

## Where did the 1998 B.A. - Comparative Literature graduates go ?

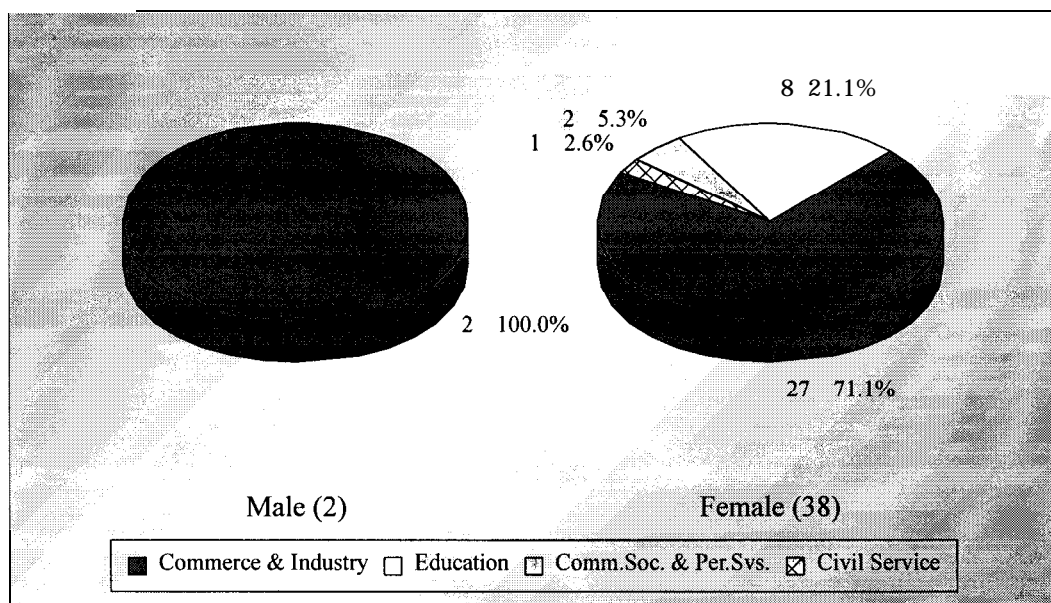
### V. Employment Sectors

73% (or 29 graduates) of the Comparative Literature graduates were employed in commerce & industry, followed by 20% (or 8 graduates) in education and 5% (or 2 graduates) in community, social & personal services. The remaining 2.5% (or 1 graduate) joined the civil service. (Figures 2 & 3)



No Response = 2

Figure 2. Employment sectors



No Response = 2

Figure 3. Employment sectors by sex

# Where did the 1998 B.A. - Comparative Literature graduates go ?

## VI. Basic Salary and Gross Income

The remuneration received by the Comparative Literature graduates is shown in Table 4.

	<i>Basic Salary</i>				<i>Gross Income</i>			
	<b>B.A. - Comparative Literature</b>		<b>HKU Average*</b>		<b>B.A. - Comparative Literature</b>		<b>HKU Average*</b>	
	'98	'97	'98	'97	'98	'97	'98	'97
<i>Mean</i>	\$11,909	\$12,937	\$15,496	\$15,749	\$13,241	\$14,032	\$16,557	\$17,552
<i>Median</i>	\$9,500	\$10,700	\$12,300	\$12,500	\$10,450	\$11,917	\$13,325	\$14,521
<i>Minimum</i>	\$1,000	\$8,000	\$1,000	\$4,400	\$6,500	\$8,000	\$5,000	\$5,000
<i>Maximum</i>	\$25,000	\$20,865	\$58,000	\$59,000	\$27,083	\$20,865	\$59,000	\$74,000

Table 4. Basic salary and gross income

\* HKU average refers to the figure for the total HKU population and includes M.B.,B.S. and B.D.S. graduates.

## VII. Number of Full-Time Job Offers

Of those in full-time employment, 63% of the graduates had more than one job offer. 27% reported having received three to six job offers. (Figure 4)

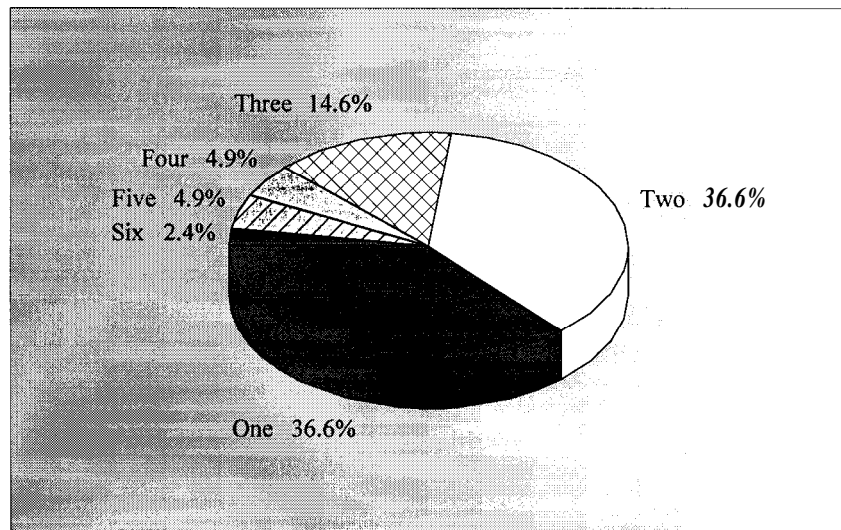


Figure 4. No. of full-time job offers

## *Where did the 1998 B.A. - Comparative Literature graduates go ?*

---

### **VIII. Names of Employers and Job Titles**

The job titles of the Comparative Literature graduates in full-time employment and the names of their employers are listed below.

<b><u>Employers :</u></b>	<b><u>Job Titles :</u></b>
<b>CIVIL SERVICE -</b>	
• HKSAR- Environmental Protection Department	• Executive Officer
<b>EDUCATION -</b>	
• Canossa College	• Graduate Master
• HK True Light College	• Graduate Master
• Kiangsu-Chekiang College	• Certificate Master
• PLK Tin Ka Ping Primary School	• Certificate Master
• Po Kok Girl's Middle School	• Graduate Master
• St Stephen's Girl's College	• Graduate Master
• TWGHs Wong Fut Nam College	• Graduate Master
• Organization's name not reported	• Graduate Master
<b>COMMUNITY, SOCIAL &amp; PERSONAL SERVICES -</b>	
• Campus Crusade for Christ	• Trainee Staff
• HK Arts Festival Society	• Editorial Assistant
<b>COMMERCE &amp; INDUSTRY -</b>	
• Airport Authority HK	• Airport Guide
• American International Assurance Co Ltd	• Financial Planner
• Apollo International Freight Forwarders Ltd	• Sales Executive
• Capstone Enterprise	• Assistant Editor
• Chartersince Realty International Ltd	• Account Officer
• Diana (HK) Co Ltd	• Assistant Body Shaping Counsellor
• Freetron (Far East) Co Ltd	• Administrative & Personnel Executive
• Frocks Ltd	• Stylist / Sales Executive
• GFL (HK) Ltd	• Marketing Officer
• Golden Silver Industries Ltd	• Sales Assistant
• Grand Hotel Group	• Secretary
• Hablo Co Ltd	• Merchandiser Assistant
• Hong Kong Sales (Knitwear) Ltd	• Assistant Merchandiser
• HongkongBank	• Counter Services Officer
• Kwan Kin Tourist Co Ltd	• Escort Guide
• Leejin Button (HK) Co Ltd	• Personal Assistant
• Luen Thai International Group Ltd	• Shipping Clerk
• Neon King Ltd	• Marketing Assistant
• New World First Bus Services Ltd	• Public Affairs Assistant
• Qualipak Manufacturing Ltd	• Marketing Executive
• Review Publishing Co Ltd	• Proof-reader
• Scott Wilson (HK) Ltd	• Assistant Project Coordinator
• Silk (HK) Co Ltd	• Administrative Clerk
• Stanford House	• Administrative Assistant

## Where did the 1998 B.A. - Comparative Literature graduates go ?

• TBWA HK	• Account Executive
. Thomas Chan Designs Ltd	. Project Manager
. Thomas Cook	. Customer Service Representative
. Tokai Marvman Securities (Asia) Ltd	. Dealing & Administrative Executive
. Organization's name not reported	. Property Officer

Table 5. List of employers and job titles

Note : Some alumni have indicated willingness to talk to individual students about their work. Their contact telephone number can be obtained from counsellors at CEPC.

**IX.** Similar information on graduates from other disciplines of study is available for reference in the Careers Library. Please enquire with the CEPC.

Careers Education and Placement Centre  
3/F Wong Chuang Lai Wah Building  
Meng Wah Complex  
The University of Hong Kong  
Pokfulam Road  
Hong Kong

Telephone : 28592314  
Fax : 2559 5238  
E-Mail : CEPC@HKUCC.HKU.HK  
Homepage : <http://www.hku.hk/cepc>

Opening Hours : Monday - Friday (9:00 a.m. to 5:30 p.m.)  
Saturday (9:00 a.m. to 12:00 p.m.)

Cindy Chan

August, 1999

The analysis is based on information provided by the respondents, and the Careers Education & Placement Centre should not be held responsible for any errors arising therefrom.

No part of this report may be reproduced in any form or by whatever means, without written permission from the Director of the Careers Education and Placement Centre, The University of Hong Kong