



One door to the future

Join Deloitte for a future with impact that matters

Interested in joining the world's largest professional firm and change the world that ensures you have a positive impact on colleagues, clients and the wider community?

Campus recruitment for 2021 career opportunities at Deloitte China has kicked off. Stay connected to find out how you'd benefit from our high value, high touch, high tech approach to graduate development.

As an outstanding graduate who wants to make an impact in China, our graduate program is the perfect platform to launch your career.



www.deloitte.com/cn 德勤招聘



MAKING AN
IMPACT THAT
MATTERS
since 1845

What we look for

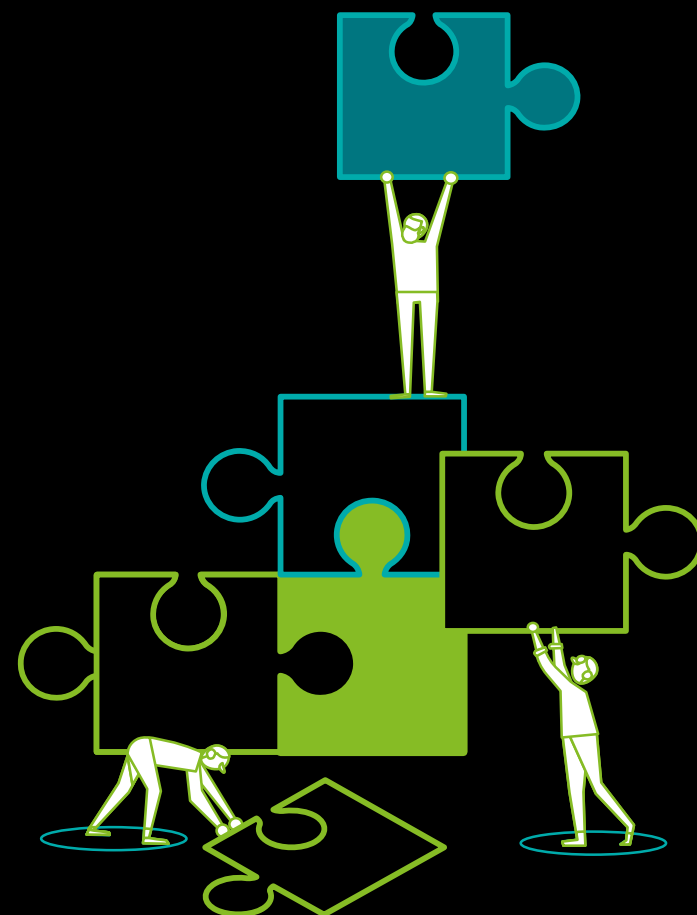
Attracting top talents is a high priority for Deloitte as we help our clients shape the future of business – and the future of work itself – in this era of rapid technological change and transformation. We welcome bright, inquisitive, innovative 2020 and 2021 graduates from all disciplines.

Here are the opportunities

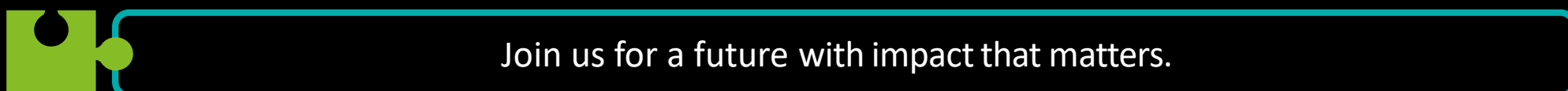
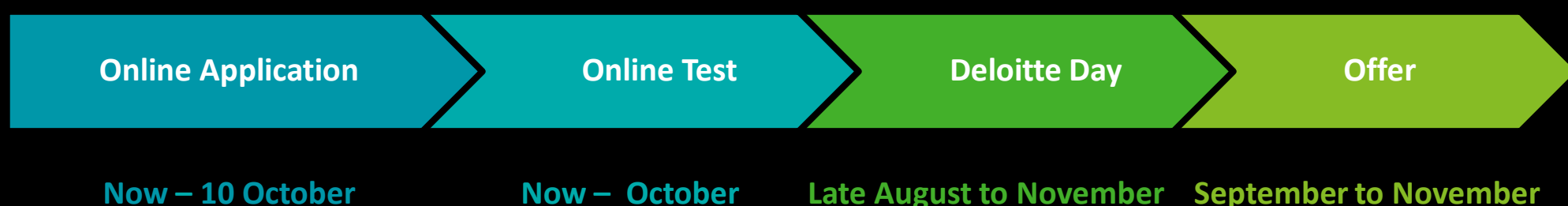
- Audit & Assurance
- Consulting
- Financial Advisory
- Risk Advisory
- Tax & Business Advisory

To know more about the job and submit your online application, please visit our career website at: www.deloitte.com/cn

Enquiries: hrrccrservice@deloitte.com.cn



Recruitment Process



About Deloitte

Deloitte refers to one or more of Deloitte Touche Tohmatsu Limited (“DTTL”), its global network of member firms, and their related entities (collectively, the “Deloitte organization”). DTTL (also referred to as “Deloitte Global”) and each of its member firms and related entities are legally separate and independent entities, which cannot obligate or bind each other in respect of third parties. DTTL and each DTTL member firm and related entity is liable only for its own acts and omissions, and not those of each other. DTTL does not provide services to clients. Please see www.deloitte.com/about to learn more.

Deloitte is a leading global provider of audit and assurance, consulting, financial advisory, risk advisory, tax and related services. Our global network of member firms and related entities in more than 150 countries and territories (collectively, the “Deloitte organization”) serves four out of five Fortune Global 500® companies. Learn how Deloitte’s approximately 312,000 people make an impact that matters at www.deloitte.com.

Deloitte Asia Pacific Limited is a company limited by guarantee and a member firm of DTTL. Members of Deloitte Asia Pacific Limited and their related entities, each of which are separate and independent legal entities, provide services from more than 100 cities across the region, including Auckland, Bangkok, Beijing, Hanoi, Hong Kong, Jakarta, Kuala Lumpur, Manila, Melbourne, Osaka, Seoul, Shanghai, Singapore, Sydney, Taipei and Tokyo.

The Deloitte brand entered the China market in 1917 with the opening of an office in Shanghai. Today, Deloitte China delivers a comprehensive range of audit & assurance, consulting, financial advisory, risk advisory and tax services to local, multinational and growth enterprise clients in China. Deloitte China has also made—and continues to make—substantial contributions to the development of China's accounting standards, taxation system and professional expertise. Deloitte China is a locally incorporated professional services organization, owned by its partners in China. To learn more about how Deloitte makes an Impact that Matters in China, please connect with our social media platforms at www2.deloitte.com/cn/en/social-media.

This communication contains general information only, and none of Deloitte Touche Tohmatsu Limited (“DTTL”), its global network of member firms or their related entities (collectively, the “Deloitte organization”) is, by means of this communication, rendering professional advice or services. Before making any decision or taking any action that may affect your finances or your business, you should consult a qualified professional adviser.

No representations, warranties or undertakings (express or implied) are given as to the accuracy or completeness of the information in this communication, and none of DTTL, its member firms, related entities, employees or agents shall be liable or responsible for any loss or damage whatsoever arising directly or indirectly in connection with any person relying on this communication. DTTL and each of its member firms, and their related entities, are legally separate and independent entities.